



Crash Guard™ Safety Products

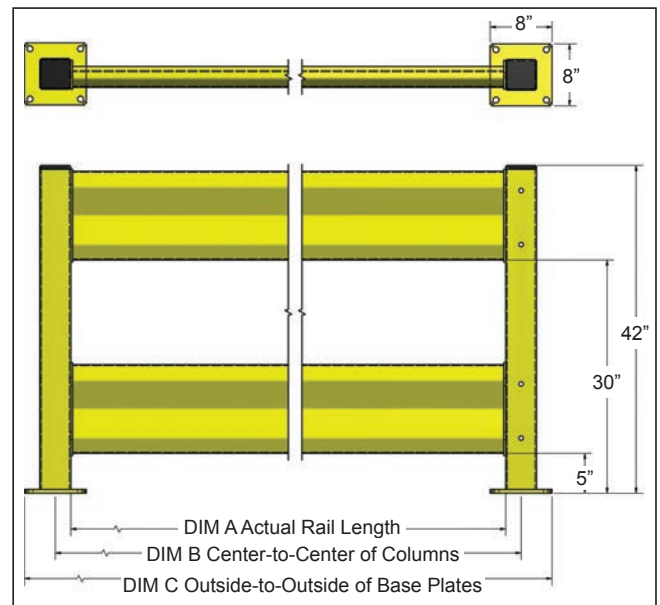
Improve plant safety and efficiency by reducing the costs associated with employee injury, machinery down time, insurance claims, and building repairs due to accidental collisions.

TUFF GUARD SAFETY RAILING

- Ease of installation.
- 4" x 4" x 3/16" structural steel square tubing posts for mounting posts
- Plastic insert caps for mounting post closure and enhanced appearance
- Hardware for rail attachment included: 2 bolts per side (4 bolts per rail)
- Formed 10 gauge steel rails in lengths up to 12'
- Standard post heights: 18" and 42"
- 8" square base plates manufactured with 5/8" thick steel. Hardware includes four (ea.) 5/8" wedge anchors for concrete mounting
- Bolt fasteners are hidden behind the rail for a finished, clean look
- Railing that withstands impacts of up to a 10,000 pound load at 6 mph (with proper installation)
- Offset posts available



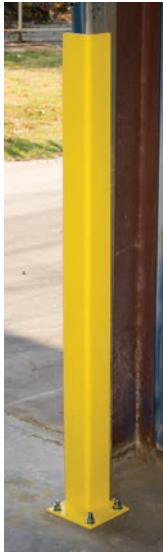
RAIL	DIMENSION A	DIMENSION B	DIMENSION C
TGR2	20"	24"	32"
TGR3	32"	36"	44"
TGR4	44"	48"	56"
TGR5	56"	60"	68"
TGR6	68"	72"	80"
TGR7	80"	84"	92"
TGR8	92"	96"	104"
TGR9	104"	108"	116"
TGR10	116"	120"	128"
TGR11	128"	132"	140"
TGR12	140"	144"	152"



For information on Bluff's original Crash Guard, call 800-433-2212.



DG

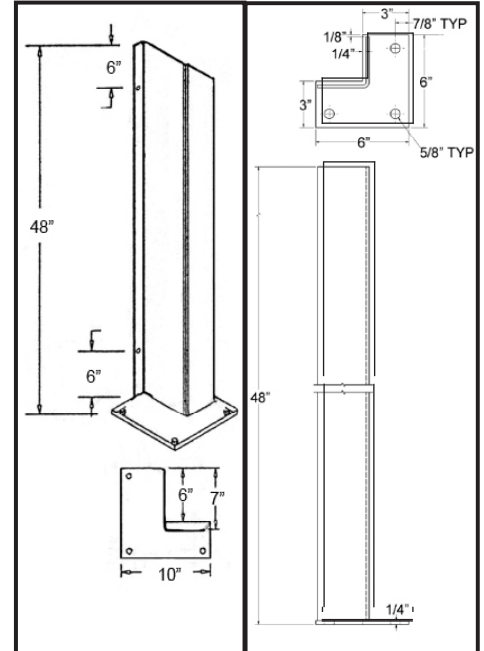


DG48-3

DOOR TRACK GUARD (DG & DG48-3)

Protects overhead door tracks from damage. Wrap-around track design for free door operation. Chamfered edge for reduced risk of injury when lowering door.

- 3/16" thick steel
- DG has 3/8" x 10" x 10" steel base plate with 5/8" holes (fasteners not included)
- DG can be fastened to both floor and wall
- DG48-3 has 1/4" x 6" x 6" steel base plate and only fastens to floor (fasteners not included) 1/2" anchors recommended.
- DG48-3 is a smaller lighter model that allows for tighter fit around door track

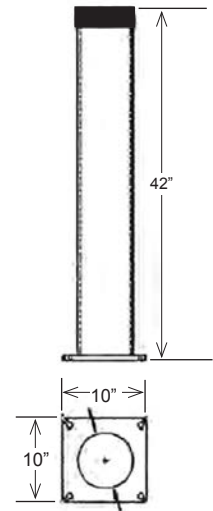


SRB

BOLLARD

Protects personnel and machinery. Simply bolt into position—no concrete work required.

- 6" I.D. sch 40 pipe
- 42" high
- 10" x 10" x 5/8" base
- Black plastic cap
- 3/4" mount holes
- 5/8" anchors provided

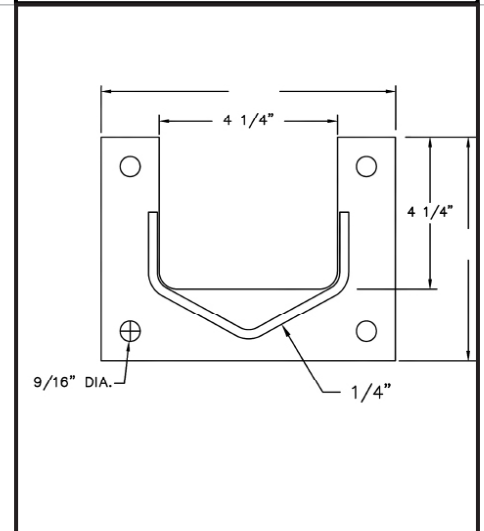


PO

POST PROTECTOR

Protects posts from damage.

- Various thickness protection available in 1/4", 3/8", and 1/2"
- Height protection available in 12", 18", and 24" (1/4PO12 shown on right)
- Standard models fit around rack posts up to 4" wide
- Base plates have four 9/16" mounting holes (fasteners not included). 1/2" anchors recommended

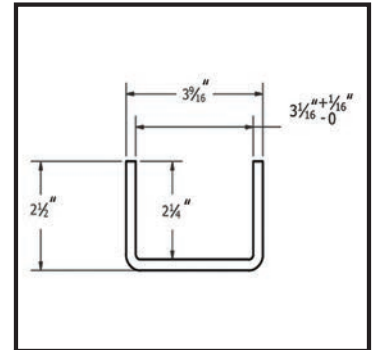




CP

BOLT-ON POST PROTECTOR

- 42" standard height with any height available.
- Easily installed. No anchoring necessary.
- Bolts directly to the column for additional column support and for damaged post reinforcement

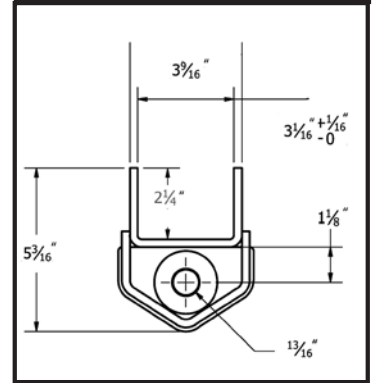


CPBN

BOLT-ON BULLNOSE POST PROTECTOR

Tapered design protects racks from costly damage from warehouse vehicles.

- Protects rack columns from damage
- Easily installed
- 24" – 42" height column protection
- Bolts directly to column (floor anchors optional)



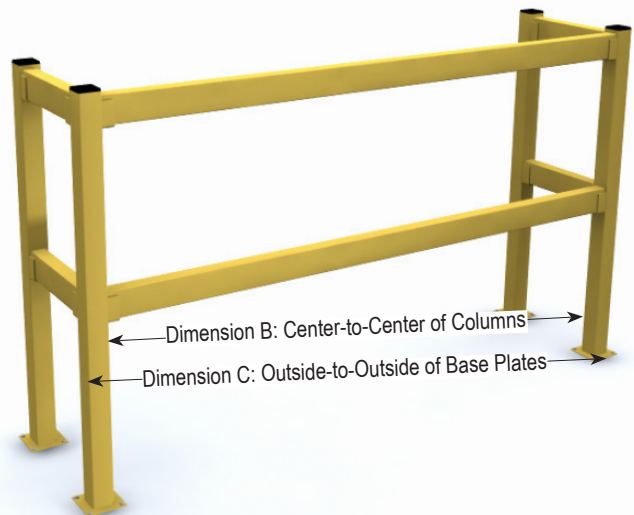
MODULAR PROTECTIVE BARRIER

An inexpensive and simple solution to solving difficult safety barrier protection problems.

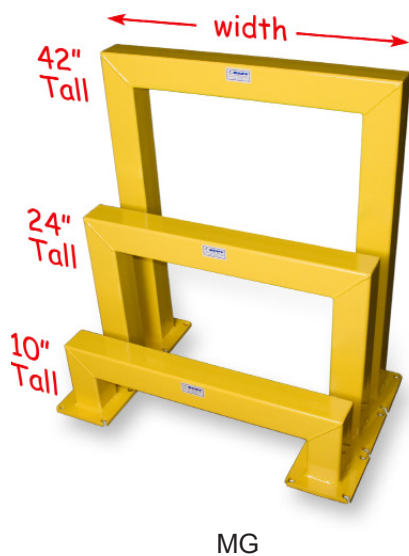
- Available in 20" single or 42" double post design with guard rail lengths up to 10'
- 42" double rail meets OSHA guidelines for rail protectors
- "Lift out" design allows temporary access to specific areas quickly and safely
- Simple to install or cut custom sizes in the field
- Installation hardware not included. 1/2" anchors recommended



MPB



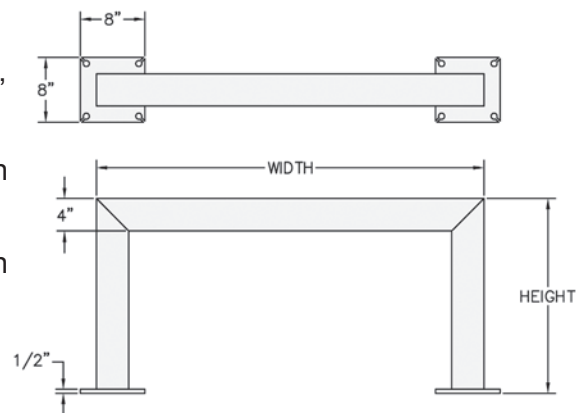
MODEL	DESCRIPTION	DIM A	DIM B	WEIGHT
MBPR4	4' RAIL	48"	56"	18
MPBR6	6' RAIL	72"	80"	27
MPBR8	8' RAIL	96"	104"	37
MPBR10	10' RAIL	120"	128"	46



MACHINE GUARD

Provides superior protection for your facility and machinery from costly forklift damage.

- Fully welded unit creates barriers between traffic areas and valuable machinery
- Height protection available in 10", 24", and 42" sizes
- 4" square steel tubing comes with 1/2" x 8" x 8" base plates
- 5" square steel tubing comes with 1/2" x 10" x 10" base plates
- Quick and easy installation

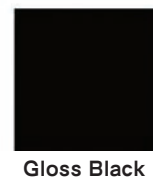
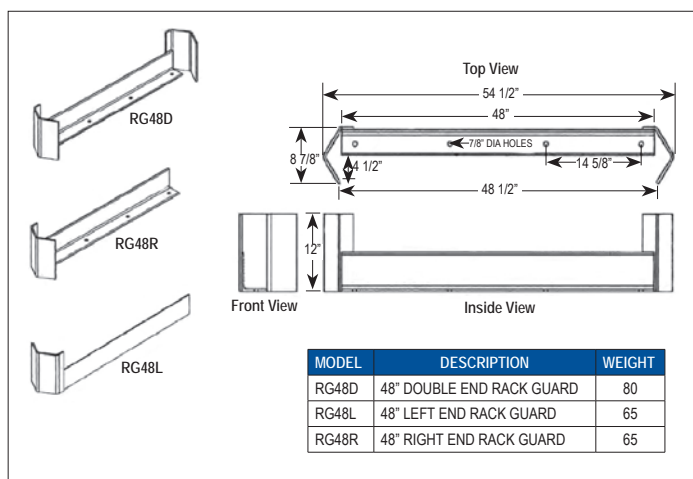


RG

RACK GUARD

A simple, inexpensive way to absorb fork truck impact that can damage valuable racks and products.

- Wrap-around feature protects rack from front and aisle damage
- Bolted to floor for extra stability
- Heavy duty design
- Hardware kits available (not included)
- 1/2" anchors are recommended



All Crash Guard products are available in four standard colors. custom colors and galvanized finish.

