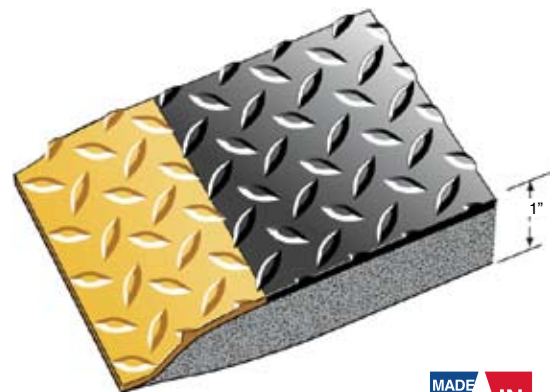
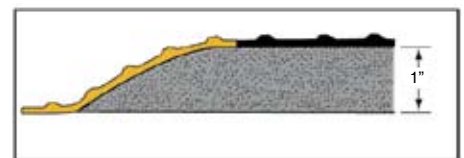
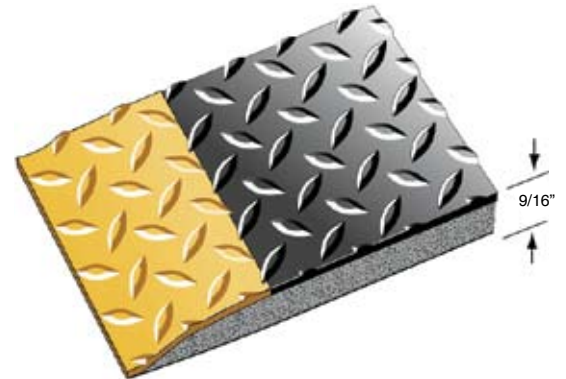
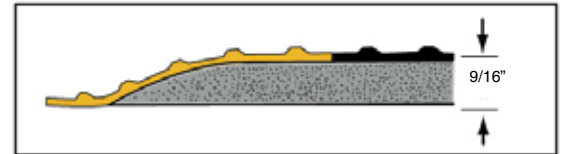




DIAMOND PLATE™ Anti-Fatigue Mats



DIAMOND PLATE ANTI-FATIGUE

- Diamond Plate Anti-Fatigue by Rhino is the benchmark for comparison to all other Industrial Anti-Fatigue Mats. This strong performer suffers no deterioration from weathering and ozone exposure and is self-extinguishing when tested in accordance with FMVSS-302. These mats offer excellent durability following exposure to many organic and inorganic industrial chemicals.
- Shop and compare, Rhino's Diamond Plate Anti-Fatigue far exceeds the competition with it's closed cell polymeric sponge base that produces the incredibly soft and resilient rebound properties needed in a rigorous manufacturing environment.
- This industrial standard is available in two styles. The Heavy duty style is 9/16" thick and the Super Duty is a full 1" thick. Both styles are available in individual mats or full roll lengths of 24", 36", 48", 60", 72", and 96" widths.
- 3 year warranty.

DIAMOND PLATE TILE TOP ANTI-FATIGUE MATS			
Stock No.	Sizes	Weight Ea. 9/16"	Weight Ea. 1"
DTT2436	2' x 3'	9.0 lbs.	10.0 lbs.
DTT3660	3' x 5'	19.0 lbs.	22.0 lbs.
Custom Sizes - available in lengths up to 75 lin. ft.			
Stock No.	Width	Weight/Lin.Ft. 9/16"	Weight/Lin Ft. 1"
DTT24	24"	2.2 lbs.	2.6 lbs.
DTT36	36"	3.3 lbs.	3.9 lbs.
DTT48	48"	4.4 lbs.	5.2 lbs.
DTT60	60"	5.5 lbs.	6.5 lbs.
DTT72	72" Seamed	6.6 lbs.	7.8 lbs.
DTT96	96" Seamed	8.8 lbs.	10.4 lbs.
Full Rolls	Sizes	Weight Ea. 9/16"	Weight Ea. 1"
DTT275	2' x 75'	170.0 lbs.	230.0 lbs.
DTT375	3' x 75'	248.0 lbs.	340.0 lbs.
DTT475	4' x 75'	342.0 lbs.	450.0 lbs.
DTT575	5' x 75'	415.0 lbs.	500.0 lbs.
DTT675	6' x 75' Seamed	500.0 lbs.	600.0 lbs.
Color: Black, Solid Gray, Gray/Yellow, Black/Yellow. 60" Black & Black/Yellow only. 1" Thick/Double Sponge (Add DS to Stock No.)			



Black/Yellow



Gray/Yellow



Black



Gray



NEW!



DIAMOND PLATE BRITE ANTI-FATIGUE

- The reflective properties in Diamond Plate Brite Anti-Fatigue mats support lighting quality, help eliminate the need for task lighting and create uniform shadow free illumination in production & personnel areas where you need it most.
- Improvements in workplace illumination can create an increase in general well being, better health, reduced absenteeism, increased productivity and help alleviate the common subclinical problems among night shift workers.
- Diamond Plate Brite is made from the same exceptionally durable compound as our Standard Diamond plate series but features a semi-reflective top surface that offers full-spectrum reflectivity combined with the incredibly soft and resilient rebound properties demanded of a anti-fatigue mat in rigorous commercial and industrial use.
- This product, like our Diamond Plate series, offers excellent durability, suffers no deterioration from weathering, ozone exposure and is self-extinguishing when tested in accordance with FMVSS-302.
- Diamond Plate Brite Anti-Fatigue mats are available in two styles. The Heavy-Duty style is ½" thick and the Super duty is a full 1" thick. Both styles are available in individual mats or full roll lengths of 36" and 72" widths.
- 3 year warranty.



DIAMOND PLATE BRITE ANTI-FATIGUE MATS

Stock No.	Sizes	Weight Ea. 9/16"	Weight Ea. 1"
DTB2436	2' x 3'	9.0 lbs.	10.0 lbs.
DTB3660	3' x 5'	19.0 lbs.	22.0 lbs.

Custom Sizes - available in lengths up to 75 lin. ft.

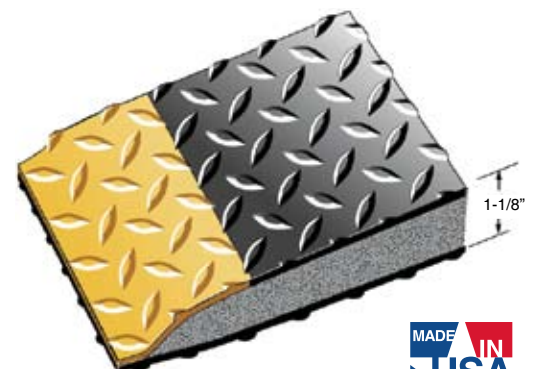
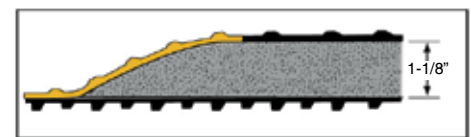
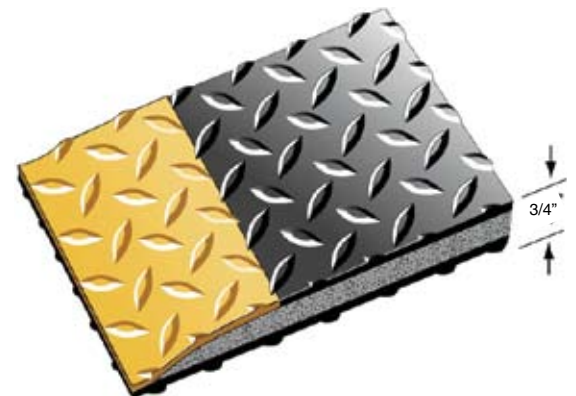
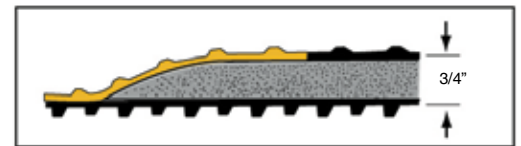
Stock No.	Width	Weight/Lin.Ft. 9/16"	Weight/Lin Ft. 1"
DTB36	36"	3.3 lbs.	3.9 lbs.
DTB72	72" Seamed	6.6 lbs.	7.8 lbs.

Full Rolls	Sizes	Weight Ea. 9/16"	Weight Ea. 1"
DTB375	3' x 75'	248.0 lbs.	340.0 lbs.
DTB675	6' x 75' Seamed	500.0 lbs.	600.0 lbs.

Color: Shiny Metallic only. 1" Thick/Double Sponge, add DS



DIAMOND PLATE/KNOB BACK™ Anti-Fatigue Mats



DIAMOND PLATE / KNOB BACK

- The comfort and durability of Diamond Plate Anti-Fatigue matting in a configuration that makes it suitable for wet area applications, areas that were previously restricted to the traditional molded products with their marginal anti-fatigue performance.
- This new Diamond Plate/Knob Back Anti-Fatigue matting is self-extinguishing, nonflammable, and chemical resistant.
- Diamond Plate/Knob Back has a 5/32" thick diamond plate surface permanently bonded to your choice of a 3/8 " or 3/4" thick resilient closed cell polymeric sponge base.
- The knob back base is permanently bonded to the diamond plate surface creating a sealed envelope that totally encapsulates the sponge core.
- The Diamond Plate/Knob Back matting is available in two styles. The heavy-duty style is 3/4" thick and the super-duty is 1 1/8" thick.
- All edges are beveled and sealed for safety and durability.
- There are four different surface colors to choose from.
- 2 year warranty.

DIAMOND PLATE/KNOB BACK ANTI-FATIGUE MATS

For 1 1/8" mats, add "DS" to stock number

Stock No.	Sizes	Weight Ea. 3/4"	Weight Ea. 1 1/8"
DTK2436	2' x 3'	10.5 lbs.	14.7 lbs.
DTK3660	3' x 5'	30.0 lbs.	39.0 lbs.

CUSTOM SIZES-available in lengths up to 75 lin. Ft.

Stock No.	Widths	Wt./Lin. Ft. 3/4"	Wt./Lin Ft. 1 1/8"
DTK36	36"	6.5 lbs.	7.9 lbs.

Colors: Black, Black/Yellow, Gray/Yellow, Solid Gray.
1 1/8" Thick/Double Sponge (DS)



Black/Yellow



Gray/Yellow



Black



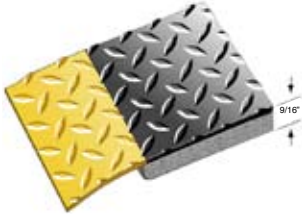
Gray

DIAMOND PLATE CONTRACT DUTY™ Anti-Fatigue Mats



DIAMOND PLATE CONTRACT DUTY

- Diamond Plate Contract Duty offers competitive pricing and a high quality alternative to import products. This strong performer far exceeds the competition with its closed cell polymeric sponge base producing the soft and resilient rebound properties needed in a manufacturing environment.
- Contract Duty Diamond shows no deterioration from ozone exposure and is self-extinguishing when tested in accordance with FMVSS-302.



DIAMOND PLATE CONTRACT DUTY ANTI-FATIGUE

9/16" mats only

Stock No.	Sizes	Wt. Ea.
DTT-2436CD	2' x 3'	8.0 lbs.
DTT-3660CD	3' x 5'	16.0 lbs.

CUSTOM SIZES – available in lengths up to 75 lin. ft.

Stock No.	Widths	Wt. Lin. Ft.
DTT-24CD	24"	2.0 lbs.
DTT-36CD	36"	3.0 lbs.
DTT-48CD	48"	4.0 lbs.

Color: Black and Black/Yellow.
9/16" Thick



CORRUGATED CONTRACT DUTY™ Anti-Fatigue Mats



CORRUGATED ANTI-FATIGUE MATS

1/2" mats only

Stock No.	Sizes	Wt. Ea. 1/2"
CTT2436CD	2' x 3'	8.0 lbs.
CTT3660CD	3' x 5'	16.0 lbs.

CUSTOM SIZES – available in lengths up to 75 lin. ft.

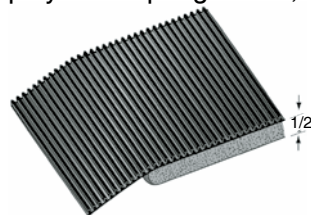
Stock No.	Widths	Wt./Lin. Ft. 1/2"
CTT24CD	24"	2.0 lbs.
CTT36CD	36"	3.0 lbs.
CTT48CD	48"	4.0 lbs.

Colors: Black
1/2" Thick



CORRUGATED ANTI-FATIGUE

- Corrugated top anti-fatigue mats have been around for many years and remain a favorite in commercial and industrial environments. The presence of imports in the marketplace is something we have been watching and to give our distributors an advantage, we developed our Contract Duty mats.
- Contract Duty Corrugated offers the quality of a laminated product at a price point that is sure to fit any budget.
- 1/8" thick corrugated top laminated to a 3/8" closed cell polymeric sponge base, overall thickness 1/2".

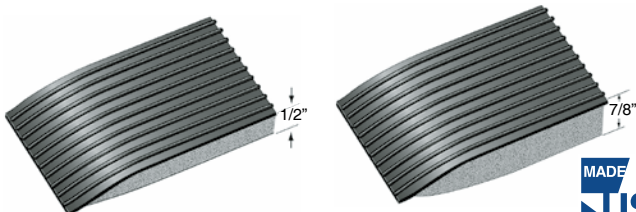


EASY KLEEN Anti-Fatigue Mats



EASY KLEEN ANTI-FATIGUE

- Wide ribbed vinyl surface ensuring quick and easy removal of dirt and debris from mats.
- 1/8" thick round ribbed vinyl surface with a resilient closed cell polymeric sponge base.
- Your choice of 1/2" or 7/8" overall thickness.



* Double Sponge Option



EASY KLEEN ANTI-FATIGUE

For 7/8" mats, add "DS" to stock number

Stock No.	Sizes	Wt. Ea. 1/2"	Wt. Ea. 7/8"
ETT-2436	2' x 3'	8.0 lbs.	9.0 lbs.
ETT-3660	3' x 5'	16.0 lbs.	19.0 lbs.

CUSTOM SIZES – available in lengths up to 75 lin. ft.

Stock No.	Widths	Wt. Lin. Ft. 1/2"	Wt. Lin. Ft. 7/8"
ETT-24	24"	2.0 lbs.	2.4 lbs.
ETT-36	36"	3.0 lbs.	3.6 lbs.
ETT-48	48"	4.0 lbs.	4.8 lbs.
ETT-60	60" Black only	5.0 lbs.	16.0 lbs.

Colors: Black, Gray.

7/8" Thick/Double Sponge (DS)

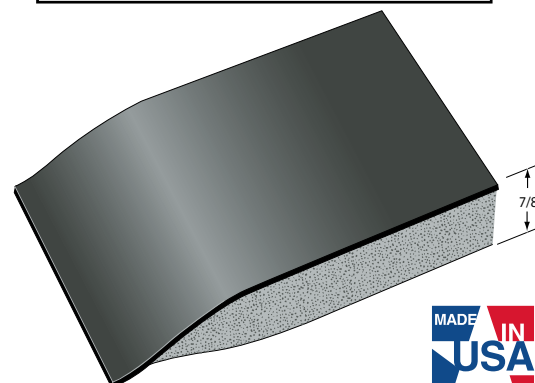
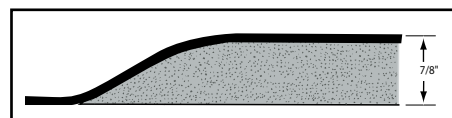
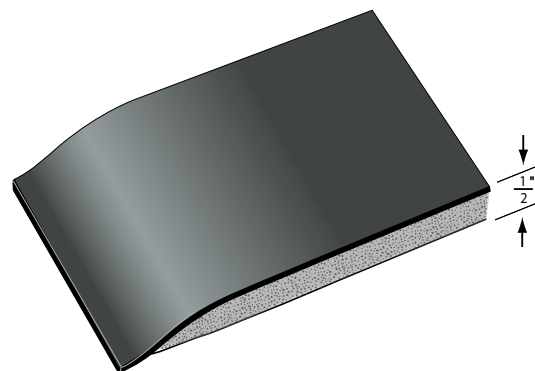
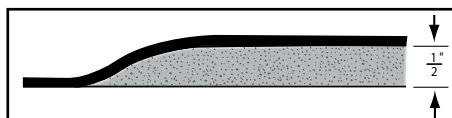


INDUSTRIAL SMOOTH™ Anti-Fatigue Mats



INDUSTRIAL SMOOTH™ ANTI-FATIGUE

- Our new Industrial Smooth Anti-Fatigue is made from the same exceptionally durable compound as our Diamond Plate, but features a fine satin finish that allows for torque-free movement at industrial workstations.
- Anti-Fatigue Mat flexibility is only one consideration, the next is freedom of movement. Industrial Smooth Anti-Fatigue Mats facilitate the 180-degree to-and-fro movement required at service counters and assembly lines while avoiding the stress on knees and ankles that result when the same movements are made on mats with a molded non-slip surface.
- Industrial Smooth Anti-Fatigue Mats provide that “pivot point ease™” plus the incredibly soft and resilient rebound properties needed in a rigorous commercial environment. The product is a real plus for housekeeping as the smooth top makes cleaning a breeze.
- This product, like our Diamond Plate series, offers excellent durability, suffers no deterioration from weathering, ozone exposure and is self-extinguishing when tested in accordance with FMVSS-302.
- Industrial Smooth Anti-Fatigue Mats are available in two styles. The Heavy duty style is 1/2" thick and the Super Duty is a full 7/8" thick. Both styles are available in individual mats or full roll lengths of 24", 36", 48", 60", 72", and 96" widths.
- 3 year warranty.



INDUSTRIAL SMOOTH™ ANTI-FATIGUE MATS

For 7/8" mats, add “DS” to stock number

Stock No.	Sizes	Weight Ea. 1/2"	Weight Ea. 7/8"
IS2436	2' x 3'	9.0 lbs.	10.0 lbs.
IS3660	3' x 5'	19.0 lbs.	22.0 lbs.

Custom Sizes - available in lengths up to 75 lin. ft.

Stock No.	Width	Weight/Lin.Ft. 1/2"	Weight/Lin Ft. 7/8"
IS24	24"	2.2 lbs.	2.6 lbs.
IS36	36"	3.3 lbs.	3.9 lbs.
IS48	48"	4.4 lbs.	5.2 lbs.
IS60	60"	5.5 lbs.	6.5 lbs.
IS72	72" Seamed	6.6 lbs.	7.8 lbs.
IS96	96" Seamed	8.8 lbs.	10.4 lbs.

Color: Black. 1" Thick/Double Sponge (Add DS to Stock No.)



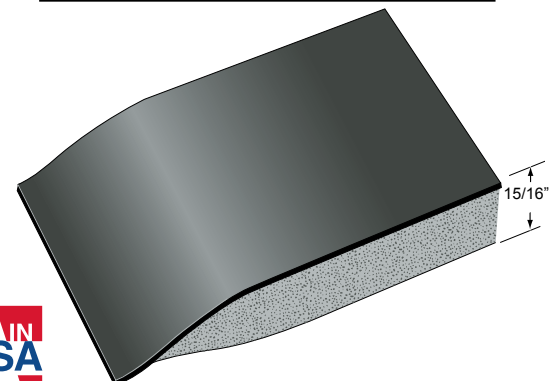
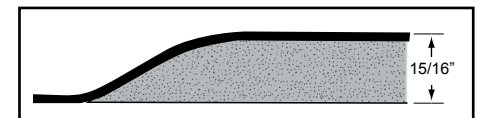
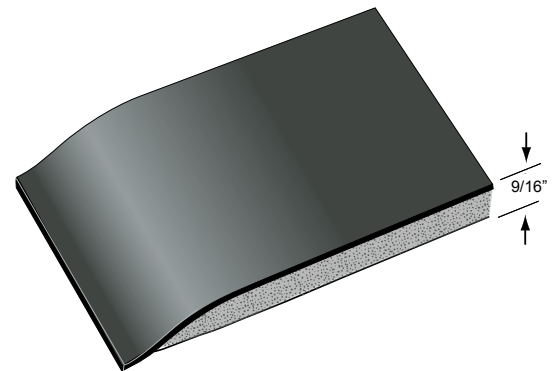
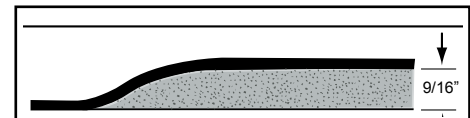


NEW!



HDT-ANTI FATIGUE MAT

- HDT-Anti Fatigue was developed to give assembly line personnel a mat that stools or chairs with casters could be used on. The product has also found a niche in laboratories and the retail sector for use in pharmacies.
- The top surface of HDT-Anti Fatigue is made from the same exceptionally durable compound as our Diamond Plate product except it's 3/16" thick with a smooth surface.
- This puncture proof surface material combined with our closed cell polymeric sponge base creates a mat to withstand the most rigorous commercial environments.
- HDT offers excellent durability and long life, suffers no deterioration from weathering, ozone exposure and is self-extinguishing when tested in accordance with FMVSS-302.
- HDT-Anti Fatigue Mats are available in two styles. The Deluxe version is 5/8" thick and the Super Deluxe version is 1" thick. Both versions are available in individual mats or full roll lengths of 24", 36", 48", 60", and 72" widths.
- 5 year warranty.



HDT-ANTI FATIGUE

For 7/8" mats, add "DS" to stock number

Stock No.	Sizes	Weight Ea. 1/2"	Weight Ea. 7/8"
HDT-2436	24" x 36"	10.0 lbs.	12.0 lbs.
HDT-3660	36" x 60"	26.0 lbs.	31.0 lbs.

CUSTOM SIZES – available in lengths up to 75 lin. Ft.

Stock No.	Widths	Wt./Lin. Ft. 1/2"	Wt./Lin Ft. 7/8"
HDT-24	24"	3.5 lbs.	4.0 lbs.
HDT-36	36"	5.0 lbs.	6.0 lbs.
HDT-48	48"	6.5 lbs.	8.0 lbs.
HDT-60	60"	8.5 lbs.	10.0 lbs.
HDT-72	72"	10.0 lbs.	12.0 lbs.

Color: Black 7/8" Thick/Double Sponge (DS)



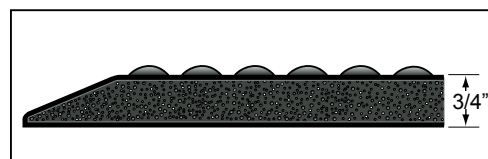


GRANDSTAND® Anti-Fatigue Mats

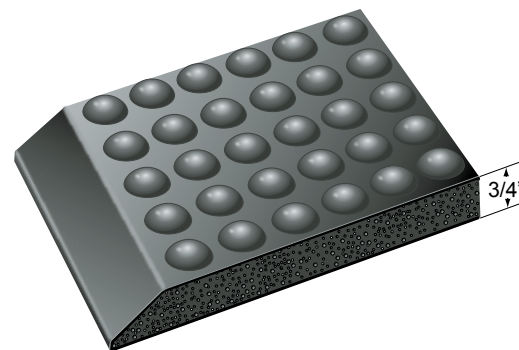


GRANDSTAND

- Part of adjusting to the New Normal, is accommodating older personnel. By 2018, people 55 or older will account for 25% of the workforce and demographics show, we don't have enough younger people to replace those valuable skills and experience.
- Grandstand was developed to provide the ultimate solution for reducing or eliminating short term fatigue and discomfort. The elastic properties of the Integral Skin Polyurethane sponge in combination with the domed top surface, give GrandStand a buoyancy and bounce that resemble the natural springiness of walking on a fresh mowed lawn.
- The resilient properties of GrandStand are incredible. We have 2'X3' finished mats for samples and your evaluation.
- Grand Stand's polyurethane construction provides beveled edges that will never curl up and is available in one piece construction in almost any size and shape.
- Ideal in industrial, laboratory, pharmaceutical, commercial environments, individual check stands or any large areas.



GRANDSTAND		
Stock No.	Size	Weight Ea.
GS-2436	2' x 3'	6.0 lbs.
GS-3660	3' x 5'	15.0 lbs.
GS-310	3' x 10'	30.0 lbs.
GS-320	3' x 20'	60.0 lbs.
CUSTOM SIZES – AVAILABLE IN LENGTHS UP TO 75 LN. FT.		
Stock No.	Widths	Weight /Lin. Ft.
GS-24	24"	2.0 lbs.
GS-36	36"	3.0 lbs.
GS-48	48"	4.0 lbs.
GS-60	60"	5.0 lbs.
GS-72	72"	6.0 lbs.
GS-96	96"	8.0 lbs.
Color: Black Only. 3/4" Thick.		



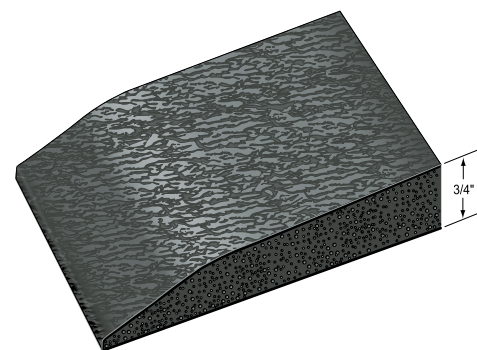
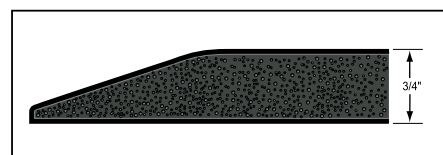


NEW!



COMFORT*CRAFT

- Comfort Craft mats are rated first in comfort because of the premium Polyurethane sponge compound used in manufacturing. The integral skin process totally encapsulates the $\frac{3}{4}$ " thick mat in an $\frac{1}{8}$ " skin that is chemical and abrasion resistance with a lay-flat beveled edge.
- Comfort Craft's crush-resistant sponge provides optimal balance in between compression and resistance which absorbs shock while providing the necessary support for stability.
- Recommended for 24/7 use at check-stands, laboratories, industrial or pharmacies.
- Comfort Craft mats transform standing personnel performance by making the job more comfortable and enjoyable.



COMFORT CRAFT		
Stock No.	Size	Weight Ea.
CC-2436	2' x 3'	12.0 lbs.
CC-3660	3' x 5'	23.0 lbs.
Color: Black		



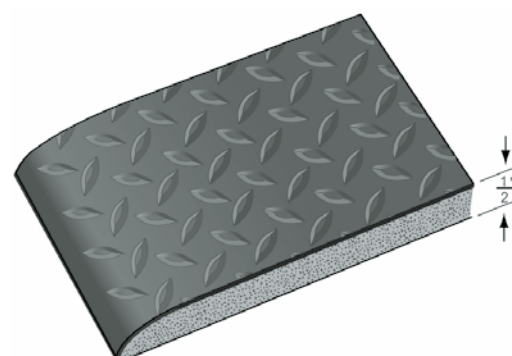
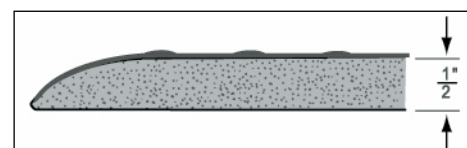


DIAMOND-TRED® Anti-Fatigue Mats



DIAMOND-TRED

- Not to be confused with our Diamond Plate Anti-fatigue, Diamond-Tred is another cost cutting product from Rhino mats that offers surprising comfort and value.
- A durable, integrated slip-resistant wear layer of high-density vinyl foam polymerically bound to a soft, moisture-resistant closed-cell vinyl sponge through Rhino's unique unbond process.
- Resistant to degradation by inorganic acids, organic acids, reducing agents, detergent solutions, alcohols, aliphatic hydrocarbons, mineral oil, amines, and aldehydes.
- All mats have a 1/10" wear surface laminated to a 1/2" sponge base and are approximately 1/2" thick. Diamond-Tred is available in full 60 foot rolls or cut lengths with bevel edges on cut ends.



DIAMOND-TRED MATS 1/2" THICK

Stock No.	Sizes	App. Wt.
DT-2436	24" x 36"	6.0 lbs.
DT-3660	36" x 60"	12.0 lbs.

DIAMOND-TRED ROLLS & CUT LENGTHS

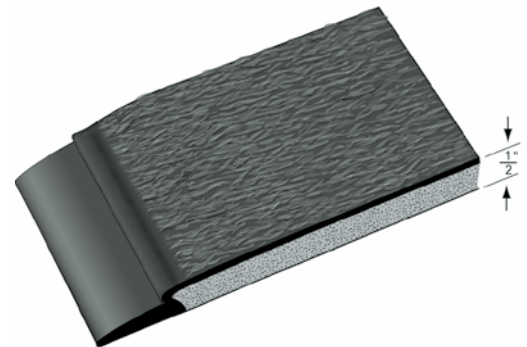
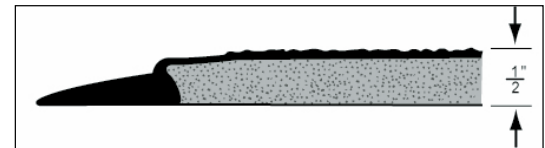
Stock No.	Sizes	App. Wt./lin.ft.
DT-36	3' x 60'	3.0 lbs.
DT-48	4' x 60'	4.0 lbs.
DT-60	6' x 60'	6.0 lbs.

Color: Black only.



DURA STEP

- The new Dura Step anti-fatigue mat combines technology and craftsmanship in an exclusive 2-layer construction.
- A durable embossed wear surface of vinyl is polymerically integrated with a moisture resistant, closed cell vinyl sponge base.
- The advanced dual action performance of the Dura Step mat provides safety, comfort and a long duty cycle in a matting product that is superior to standard single-layered foam mats.
- This exclusive manufacturing technique combines a 3/32" embossed wear surface with a 3/8" closed-cell soft sponge base layer, creating an overall thickness of approx. 1/2 inch.
- Durable beveled edges on all four sides provide users with a lay-flat safety border insuring smooth surface to surface transition.
- Dura Step Anti-Fatigue Mats are 1/2" Thick



DURA STEP ANTI-FATIGUE MATS 1/2" THICK

Stock No.	Sizes	App. Wt.
DS-2436	24" x 36"	7.0 lbs.
DS-3660	36" x 60"	15.0 lbs.

DURA STEP ROLLS & CUT LENGTHS

Stock No.	Sizes	App. Wt./lin.ft.
DS-24	2' x 60'	2.0 lbs.
DS-36	3' x 60'	3.0 lbs.
DS-48	4' x 60'	4.0 lbs.

Color: Black only.





COMFORT STEP® RIBBED Anti-Fatigue Mats



COMFORT STEP RIBBED

- Fatigue fighting floor mats and matting made of 100% closed cell vinyl foam.
- Ribbed surface for sure footedness plus beveled edges to minimize tripping and stumbling.
- Makes long-standing jobs more comfortable and boosts productivity while providing noise control and protection from cold, drafty floors.

COMFORT STEP RIBBED MATS 3/8" THICK

Stock No.	Sizes	App. Wt.
CSR-2436	24" x 36"	4.6 lbs.
CSR-2460	24" x 60"	7.7 lbs.
CSR-3660	36" x 60"	10.2 lbs.
CSR-310	36" x 120"	20.4 lbs.
CSR-4872	48" x 72"	16.3 lbs.

COMFORT STEP RIBBED MATTING 3/8" THICK

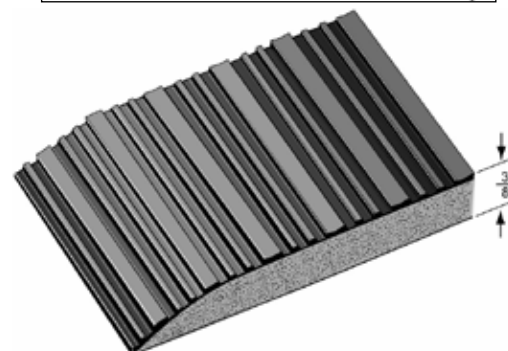
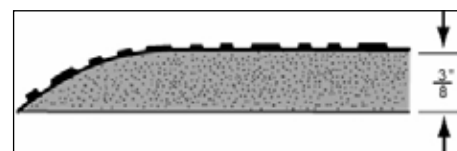
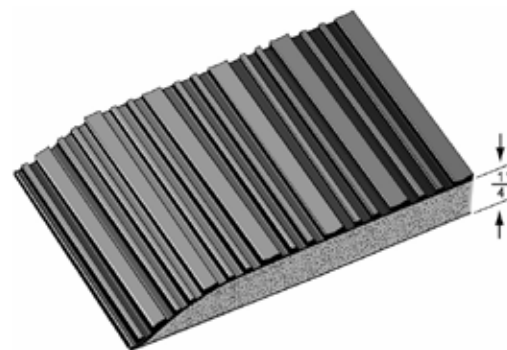
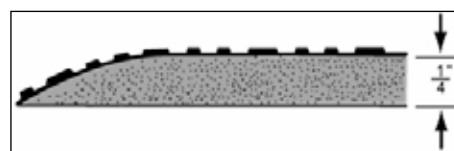
Stock No.	Sizes	App. Wt./lin.ft.
CSR-24	2' x 60'	1.5 lbs.
CSR-36	3' x 60'	2.0 lbs.
CSR-48	4' x 60'	2.6 lbs.
CSR-72	6' x 60'	4.0 lbs.

Colors: Black, Gray. (72" Black only.)

COMFORT STEP RIBBED MATTING 1/4" THICK

Stock No.	Sizes	App. Wt./lin.ft.
CSR-2536	3' X 60'	1.9 lbs.

Colors: Black only.





COMFORT STEP TEXTURED

- Fatigue fighting floor mats and matting feature 3/8" or 5/8" thick closed cell vinyl foam.
- Beveled edges minimize risk of tripping and stumbling.
- Pebble-textured top surface provides sure footing.
- Helps boost productivity by relieving fatigue caused by long standing.
- Also serves to muffle distracting noises...protects feet from cold drafty floors.

COMFORT STEP TEXTURED MATS 3/8" THICK

Stock No.	Sizes	App. Wt.
CST-2436	24" x 36"	4.6 lbs.
CST-2460	24" x 60"	7.7 lbs.
CST-3660	36" x 60"	10.2 lbs.
CST-310	36" x 120"	20.4 lbs.
CST-4872	48" x 72"	16.3 lbs.

COMFORT STEP TEXTURED MATTING 3/8" THICK

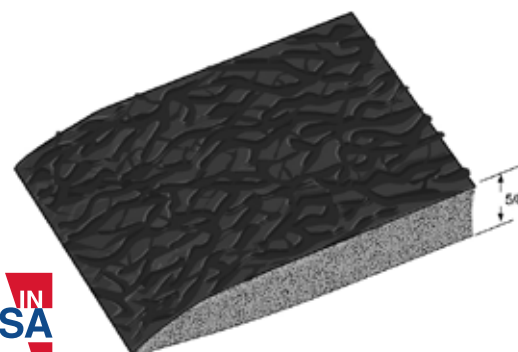
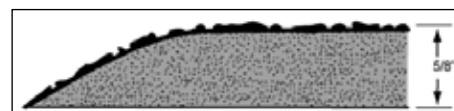
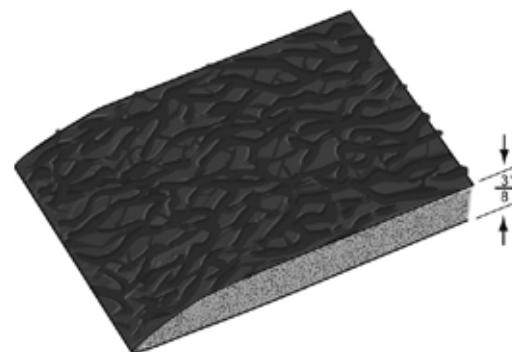
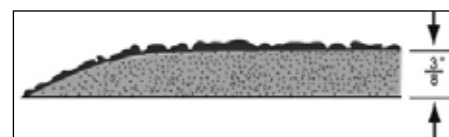
Stock No.	Sizes	App. Wt./lin.ft.
CST-24	2' x 60'	1.5 lbs.
CST-36	3' x 60'	2.0 lbs.
CST-48	4' x 60'	2.6 lbs.

Colors: Black, Gray.

COMFORT STEP TEXTURED 5/8" THICK

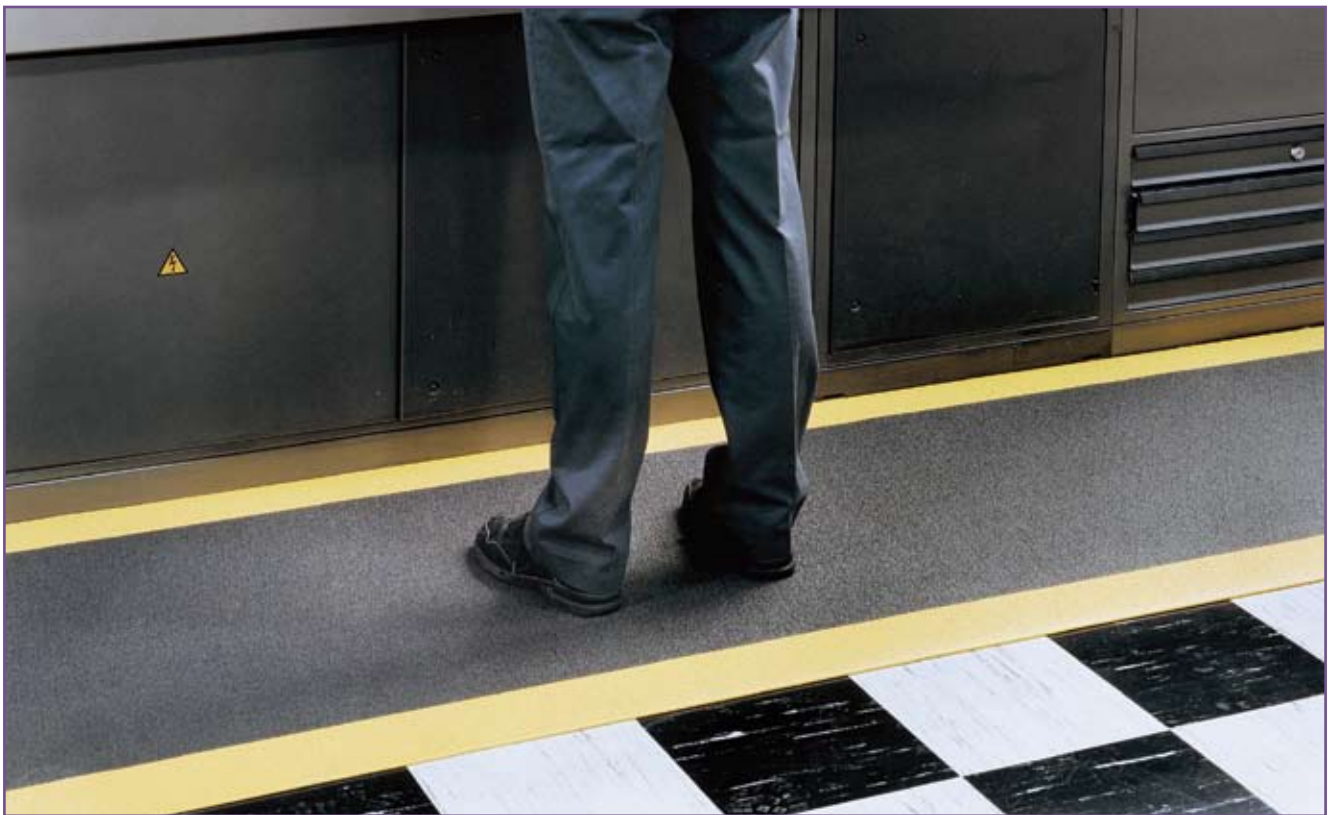
Stock No.	Sizes	App. Wt./lin.ft.
CST-330	3' X 60'	3.4 lbs.
CST-430	4' X 60'	4.5 lbs.

Colors: Black, Gray.



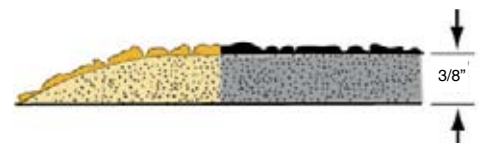


COMFORT STEP® SAFETY Anti-Fatigue Mats



COMFORT STEP SAFETY

- Textured surface provides slip-resistant footing. Beveled edges help prevent tripping.
- Bright yellow borders increases safety awareness.
- 3/8" thick closed cell vinyl foam relieves leg and back fatigue and increases productivity.



COMFORT STEP SAFETY MATS 3/8" THICK

Stock No	Sizes	App. Wt.
CSS-2436	24" x 36"	4.6 lbs.
CSS-3660	36" x 60"	10.2 lbs.
CSS-310	36" x 120"	20.4 lbs.

COMFORT STEP SAFETY MATTING 3/8" THICK

Stock No	Sizes	App. Wt./Lin.ft.
CSS-24	2' x 60'	1.5 lbs.
CSS-36	3' x 60'	2.0 lbs.
CSS-48	4' x 60'	2.6 lbs.

Colors: Black with Yellow Borders. 3/8" Thick.

