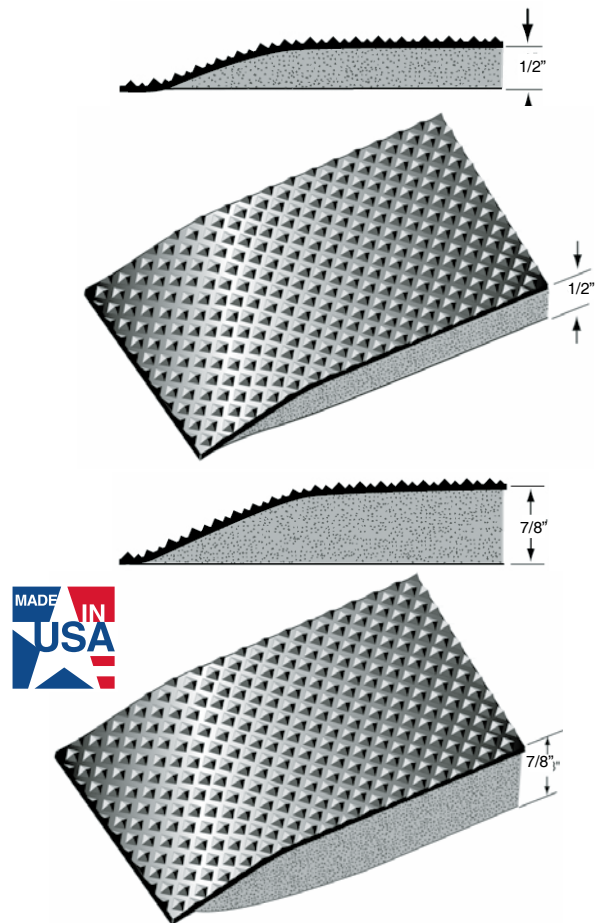




# PYRA-MAT™ Anti-Fatigue Mats

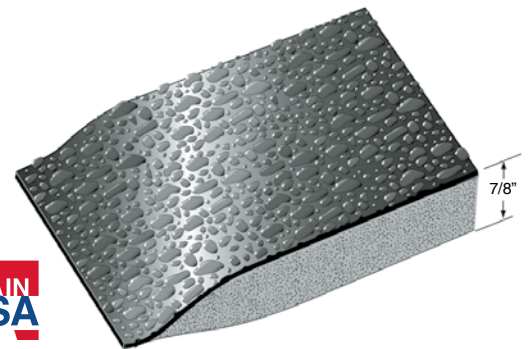
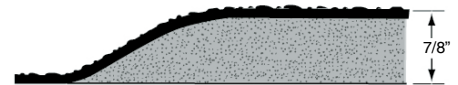
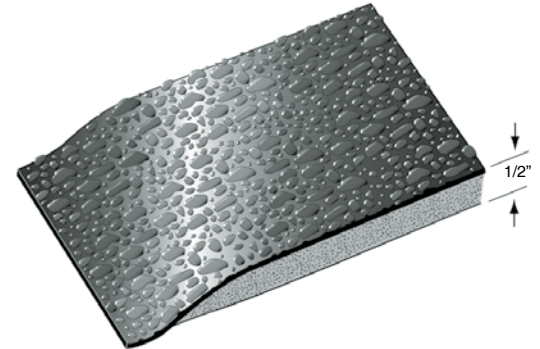
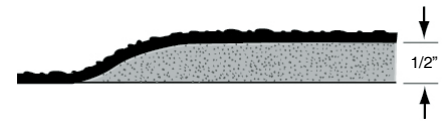


## PYRA-MAT ANTI-FATIGUE

- All the colors in the rainbow and as soft as a cloud.
- Use these bright contemporary colors to liven up work areas in commercial and retail establishments. Designed for comfort and durability as well as brilliant colors.
- A super resilient closed cell polymeric sponge base provides exceptional buoyancy to reduce fatigue plus a non-skid pyramid surface for the toughest environments. Permanently bonded to your choice of a 3/8" or 3/4" resilient closed cell polymeric sponge base, overall thickness is 1/2" or 7/8". Two year conditional-non-prorated warranty insures against cracking or fracturing.
- Pyra-Mat is also available with logo see price list for sizes available.



PYRA-MAT ANTI-FATIGUE			
For 7/8" mats, add "DS" to stock number			
Stock No.	Size	Weight Ea. 1/2"	Weight 7/8"
PM-2436	2' x 3'	8.0 lbs.	12.0 lbs. ea.
PM-3660	3' x 5'	22.5 lbs.	30.0 lbs. ea.
CUSTOM SIZES-available in lengths up to 75 lin. Ft.			
Stock No.	Widths	Wt./Lin. Ft. 1/2"	Wt./Lin. Ft. 7/8"
PM-R24	24"	3.0 lbs./Ln. Ft.	4.0 lbs./Ln. Ft.
PM-R36	36" Seamed	4.5 lbs./Ln. Ft.	6.0 lbs./Ln. Ft.
PM-R48	48"	6.0 lbs./Ln. Ft.	8.0 lbs./Ln. Ft.
<b>Colors:</b> Black, White, Burgundy, Red, Light Gray, Dark Gray, Yellow, Brown, Tan, Navy Blue, Forest Green, Royal Blue.			
7/8" Thick/Double Sponge (DS)			



## RHINO HIDE®

Beautiful high-gloss pebble surface of non-porous Koroseal vinyl. Full 1/8" thick top surface provides resistance to punctures from heels, cart traffic, tears, cuts, and is over three times more abrasion resistant than competing products. A super resilient closed cell polymeric sponge base provides exceptional buoyancy to reduce fatigue plus a surface for the toughest environments. Permanently bonded to a 3/8" or 3/4" resilient sponge base, overall thickness is 1/2" or 7/8". Two year conditional, non-prorated warranty insures against cracking or fracturing.



RHINO HIDE® ANTI-FATIGUE MATS			
For 7/8" mats, add "DS" to stock number			
Stock No.	Sizes	Weight Ea. 1/2"	Weight Ea. 7/8"
RH-2436	2' x 3'	10.0 lbs.	12.0 lbs.
RH-3660	3' x 5'	25.0 lbs.	30.0 lbs.
CUSTOM SIZES-available in lengths up to 75 lin. Ft.			
Stock No.	Widths	Wt./Lin. Ft. 1/2"	Wt./Lin Ft. 7/8"
RH-24	24"	3.25 lbs.	4.0 lbs.
RH-36	36"	5.00 lbs.	6.0 lbs.
RH-48	48"	6.50 lbs.	8.0 lbs.
RH-72	72" SEAMED	10.00 lbs.	12.0 lbs.
RH-96	96" SEAMED	13.00 lbs.	16.0 lbs.
<b>Colors:</b> Congo Green, Sahara Sand (Tan), Serengeti Sunrise (Red), Kenya Trail (Brown), Nigerian Night (Black), Nile Mist (Gray).			
7/8" Thick/Double Sponge (DS)			



Serengeti Sunrise



Nigerian Night



Nile Mist



Congo Green



Sahara Sand



Kenya Trail





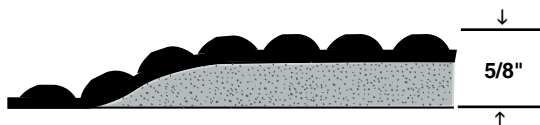
# REFLEX® THE INTERACTIVE ANTI-FATIGUE MAT

- Interactive mat is a term describing the Reflex anti-fatigue mat whose input and output are interconnected producing a combination of resilience and stimulation working together for an effect that rejuvenates as energy is expended.
- Reflex Anti-Fatigue Mats provide this *dual* action blend with buoyant polymer sponge and vertical column support domes.
  - The super resilient closed-cell polymeric sponge base encourages a subtle and constant series of small adjustments to leg and calf muscles. Adjusting to the flexibility of the mat increases blood flow by the interaction between muscles and veins, resulting in improved circulation and reduced fatigue.
  - The solid domed Reflex surface is compliant, to the shape of the foot, providing equal support of the entire footprint; simultaneously aggressive, providing upward vertical force and simple manipulation of the feet. This relieves tension, stimulates circulation and breaks up patterns of stress in all areas of the body to an amazing extent.
- Relating to the external conditions of the workplace, productivity gains through the use of anti-fatigue mats are second only to heating and air conditioning. The bonus is safety and well-being.
- 5 year warranty.
- Reflex Anti-Fatigue Mats are available in two thicknesses:



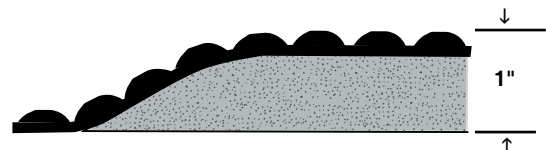
## **Heavy Duty - 5/8" thick mats**

Recommended in areas where tasks require personnel to move around in large work stations.

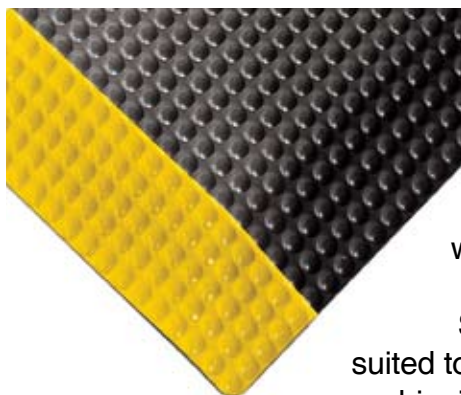


## **Super Duty - 1" thick mats**

The anti-fatigue mat of choice in standing work stations delivering unparalleled comfort.



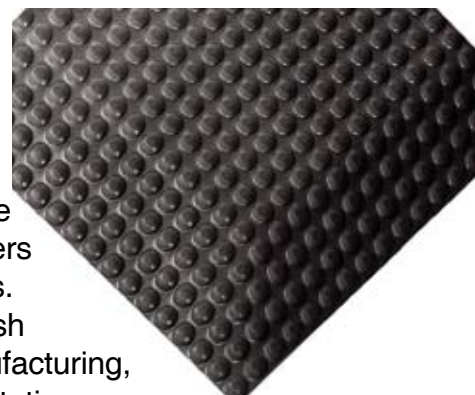
## **BLACK/YELLOW**



## **INDUSTRIAL**

High-Tech non-directional surface with safety yellow borders to highlight work areas. Solid Black is a flat finish suited to assembly lines, manufacturing, shipping and packing work stations.

## **INDUSTRIAL BLACK**



**\* Patent D543765**



## REFLEX ANTI-FATIGUE

For 1" mats, Add "DS" to stock number

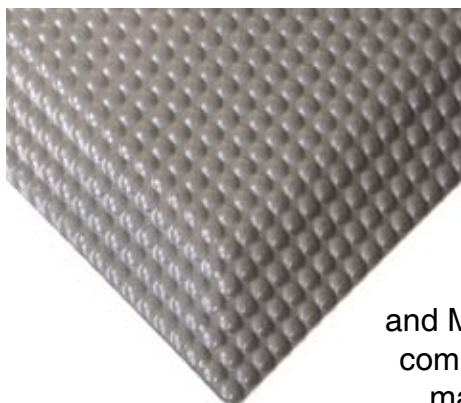
Stock No.	Sizes	Weight Ea. 5/8"	Weight Ea. 1"
RFLX2436	2' x 3'	9.0 lbs.	10.2 lbs.
RFLX3660	3' x 5'	22.0 lbs.	28.0 lbs.

**Custom Sizes** - available in lengths up to 75 lin. ft.

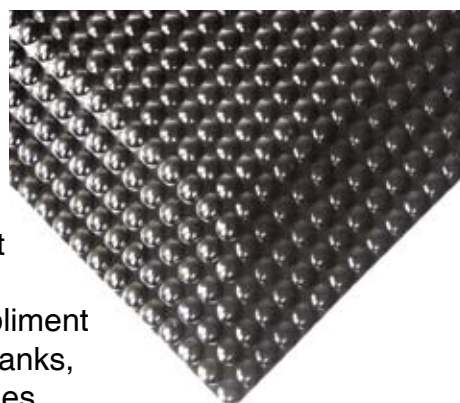
Stock No.	Width	Weight/Lin.Ft. 5/8"	Weight/Lin. Ft. 1"
RFLX24	24"	3.0 lbs.	3.8 lbs.
RFLX36	36"	4.5 lbs.	5.7 lbs.
RFLX48	48"	6.0 lbs.	7.6 lbs.
RFLX60	60"	7.5 lbs.	9.5 lbs.
RFLX72	72" Seamed	9.0 lbs.	11.4 lbs.
RFLX96	96" Seamed	12.0 lbs.	15.2 lbs.

**Commercial Colors:** Black Glossy and Metallic. **Industrial Colors:** Industrial Black, Black/Yellow.

**METALLIC**



**BLACK GLOSSY**



## COMMERCIAL

Same physical properties as our industrial series except with the Glossy Black and Metallic surface to compliment commercial offices, retail, banks, mail rooms and laboratories.

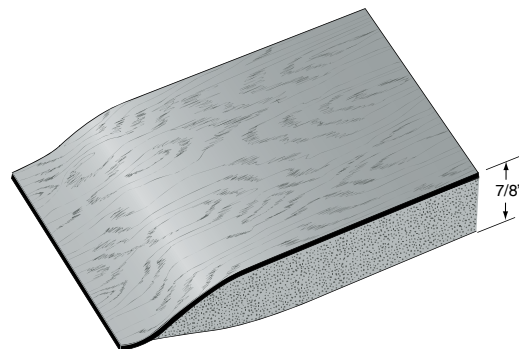
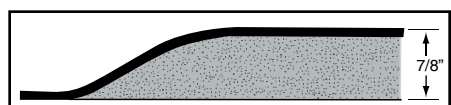
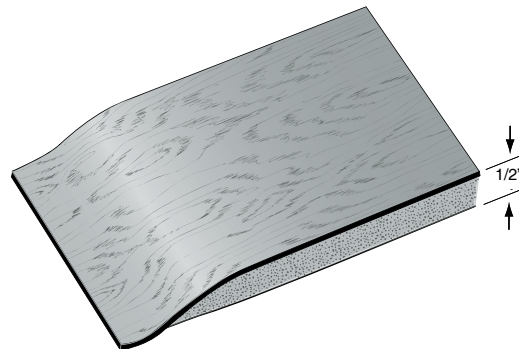
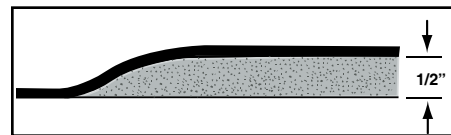




# SOFT WOODS™ Anti-Fatigue Mats



WILD CHERRY



## SOFT WOODS

- The beautiful Soft Woods anti-fatigue mat establishes a new standard of beauty in anti-fatigue mats.
- The rich look of hardwood flooring enhances your work place while providing the simplest and most effective way to reduce fatigue and stress.
- Soft Woods anti-fatigue mats are available in two styles. The single sponge style is 1/2" thick and the double sponge is a full 7/8" thick, double the thickness of ordinary mats.
- Double sponge mats by Rhino are the anti-fatigue mats of choice, producing the incredibly soft and resilient rebound properties needed in a rigorous commercial or retail environment.

WALNUT



WILD CHERRY



### SOFT WOODS ANTI-FATIGUE MATS

For 7/8" mats, add "DS" to stock number

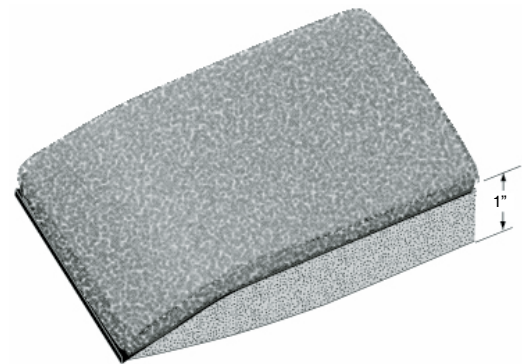
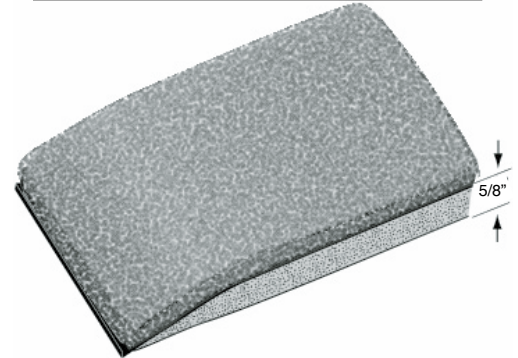
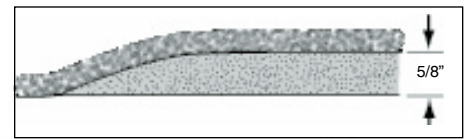
Stock No.	Size	Weight Ea. 1/2"	Weight 7/8"
SW-2436	2' x 3'	7.5 lbs.	8.5 lbs. ea.
SW-3660	3' x 5'	17.0 lbs.	21.0 lbs. ea.

**CUSTOM SIZES**-available in lengths up to 60 lin. Ft.

Stock No.	Widths	Wt./Lin. Ft. 1/2"	Wt./Lin. Ft. 7/8"
SW-24	24"	2.4 lbs./Ln. Ft.	2.8 lbs./Ln. Ft.
SW-36	36"	3.6 lbs./Ln. Ft.	4.2 lbs./Ln. Ft.
SW-48	48"	4.8 lbs./Ln. Ft.	5.6 lbs./Ln. Ft.

**Colors:** Wild Cherry, Walnut.  
7/8" Thick/Double Sponge (DS)





## TUFF PLUSH

- Tuff Plush has maintained popularity for many years and remains a favorite in commercial settings, Retail, Banks, Pharmacies, Mail Rooms, Service Counters, etc.
- Now available in nine colors to match any decor, Tuff Plush is as comfortable as it is aesthetically pleasing.
- Do not let the elegant look of this mat fool you. Tuff Plush provides resistance to punctures from heels, cart traffic tears and cuts and is permanently bonded to the same closed cell polymeric sponge base as our industrial grade mats.
- Easily cleaned with a vacuum.
- Tuff Plush mats are available in two styles. The single sponge style is 5/8" thick and the double sponge is a full 1" thick, double the thickness of ordinary mats.
- Double Sponge Tuff Plush Mats are the anti-fatigue mats of choice, delivering unparalleled comfort.



Blue



Charcoal



Beige



Solid Navy



Red/Black



Hunter Green



Walnut



Solid Black



Solid Gray

### TUFF PLUSH MATS

For 1" mats, add "DS" to stock number

Stock No.	Sizes	Wt. Ea. 5/8"	Wt. Ea. 1"
TP-2434	24" x 34"	8.4 lbs.	9.6 lbs.
TP-3460	34" x 60"	21.0 lbs.	24.0 lbs.

**CUSTOM SIZES**-available in lengths up to 60 lin. Ft.

Stock No.	Widths	Wt./Lin. Ft. 5/8"	Wt./Lin. Ft. 1"
TP-34	34"	4.2 lbs.	4.8 lbs.
TP-44	44"	5.6 lbs.	6.4 lbs.
TP-68	68"	8.4 lbs.	9.6 lbs.

**Colors:** Beige, Blue, Charcoal, Hunter Green, Solid Black, Solid Gray, Walnut, Red/Black, Solid Navy.

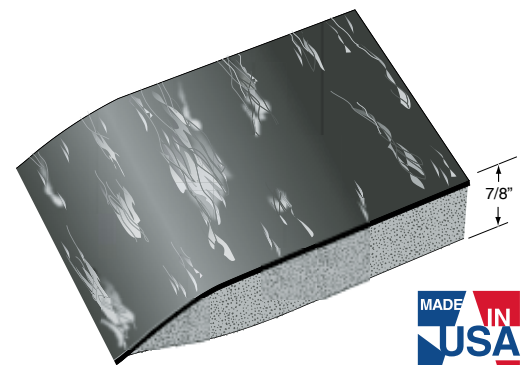
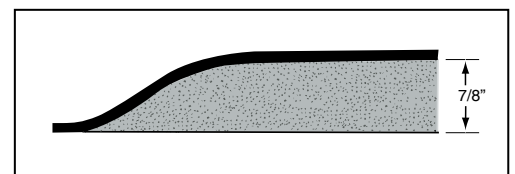
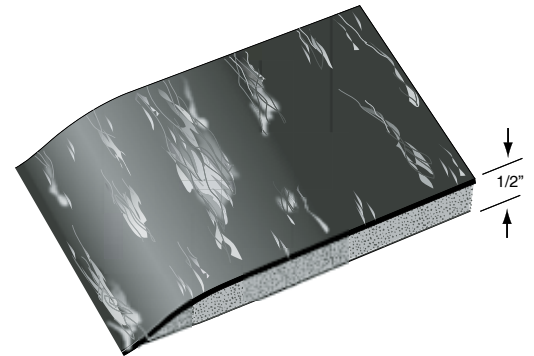
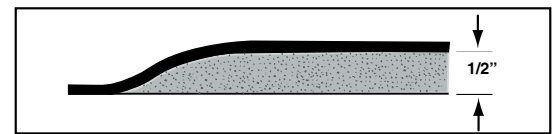
1" Thick Double Sponge (DS).







# DOCTOR STAND-EZE™ Anti Fatigue Mats



## DOCTOR STAND-EZE™

- An Anti-Fatigue Mat with attractive smooth marbled surface and non-porous encapsulated construction that cleans up easily with most disinfecting agents, meeting the challenge of laboratory and medical environments.
- Doctor Stand-Eze is ergonomically designed to stimulate blood flow and prevent fatigue. It displays excellent physical properties such as tensile strength, tear resistance and cleanability.
- Doctor Stand-Eze Anti-Fatigue mats are available in two styles. The single sponge style is 1/2" thick and the double sponge is a full 7/8" thick, double the thickness of ordinary mats. The base is sealed in a non-porous envelope that is permanently bonded to the backside.
- Three year unconditional, non-prorated warranty insures against cracking or fracturing.

### DOCTOR STAND-EZE ANTI-FATIGUE

For 7/8" mats add "DS" to stock number

Stock No.	Size	Weight Ea. 1/2"	Weight Ea. 7/8"
DSE-2436	2' x 3'	9.0 lbs.	12.0 lbs.
DSE-3648	3' x 4'	18.0 lbs.	24.0 lbs.
DSE-3660	3' x 5'	22.0 lbs.	30.0 lbs.

**CUSTOM SIZES**-available in lengths up to 20 lin. Ft.

Stock No.	Width	Wt./Lin.Ft. 1/2"	Wt./Lin.Ft. 7/8"
DSE-36	36"	4.2 lbs.	4.8 lbs.

**Colors:** Green, Blue, Brown, Tan, Charcoal, Grey, Sandalwood, Black/White, Solid Black.



Blue



Solid Black



Brown



Black/White



Tan



Gray



Charcoal

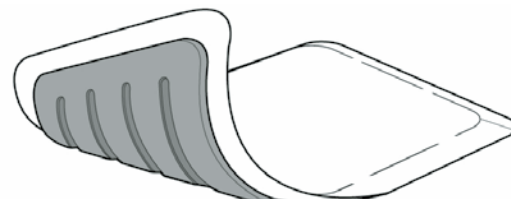
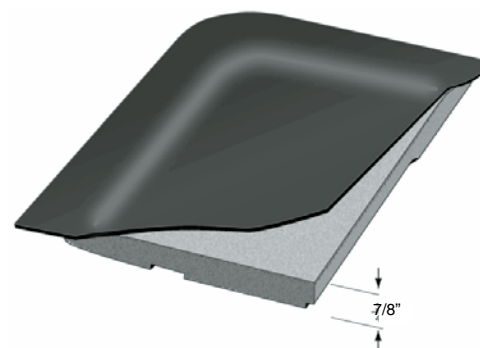
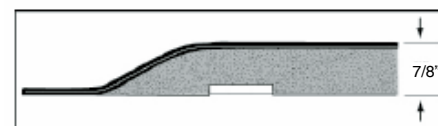


Sandalwood



## MULTI-FLEX ANTI-FATIGUE

- The Multi-Flex combination of a Performance Rated Polymeric top surface with a Multi-Flex sponge base provide the simplest and most effective way to reduce standing fatigue and stress.
- This engineered top surface is extremely durable providing resistance to punctures from heels, cart traffic, tears and cuts. At the same time the surface remains soft and pliant allowing exceptional sensitivity to the Multi-Flex sponge base.
- Multi-Flex is a super resilient polymeric sponge base with staggered air channels that create a unique multi-density surface. This encourages subtle weight shift and movement of leg and calf muscles which in turn promotes blood flow, resulting in improved circulation and reduced fatigue.
- Improving your circulation and muscle tone reduces the risk of developing varicose veins or increasing the severity of an existing condition. Remember that good circulation is the essence of a healthful life.
- Multi-Flex Anti-Fatigue mats are a full 7/8" thick, double the thickness of ordinary mats.
- Three year, conditional non-prorated warranty insures against cracking or fracturing.
- Patent pending.



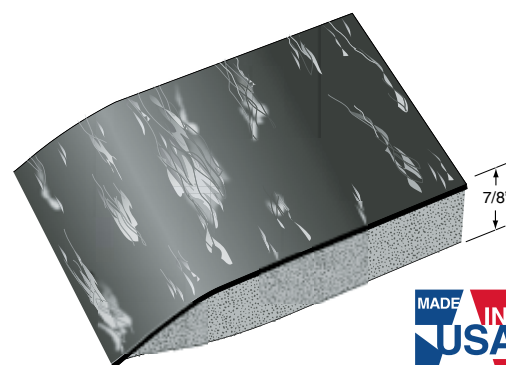
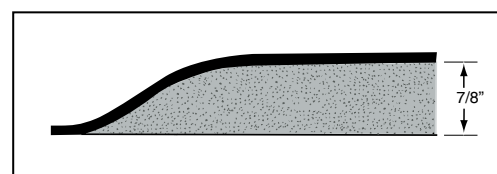
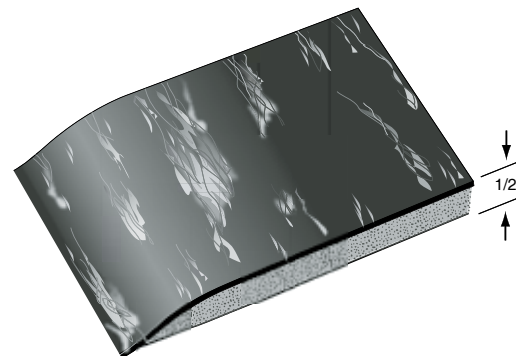
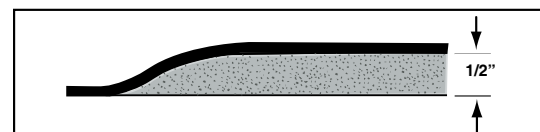
### MULTI-FLEX Anti Fatigue Mats

Stock No.	Size	Weight Ea.
MF-2436	2' x 3'	9.0 lbs
MF-3660	3' x 5'	23.0 lbs
MF-310	3' x 10'	45.0 lbs
MF-320	3' x 20'	90.0 lbs
<b>CUSTOM SIZES</b> – available in Lengths up to 75 Ln. Ft.		
Stock No.	Widths	Weight/ Lin.Ft.
MF-36	36"	4.5 lbs
MF-48	48"	6.0 lbs
<b>Color:</b> Black Only. <b>7/8" Thick.</b>		





# MARBLEIZED TILE TOP™ Anti-Fatigue Mats



## MARBLEIZED TILE TOP ANTI-FATIGUE

- A matting that provides comfort for people who stand at counters, copiers and teller stations widely used by banks and office personnel.
- Rhino Marbleized mattings are a superior value with puncture resistance that far exceeds comparable rubber products by up to 90%.
- This product is constructed of a 3/32" heavy duty marbleized tile surface, permanently bonded to your choice of a 3/8" or 3/4" resilient closed cell polymer sponge base. Overall thickness is 1/2" or 7/8".
- Tile top is available in standard stock sizes and in roll lengths.
- Edges will be beveled.

### MARBLEIZED TILE TOP ANTI-FATIGUE MATS

For 7/8" mats, add "DS" to stock number

Stock No.	Sizes	Weight Ea. 1/2"	Weight Ea. 7/8"
TT-1830	18" x 30"	4.5 lbs.	5.5 lbs.
TT-1848	18" x 48"	7.5 lbs.	8.5 lbs.
TT-2436	24" x 36"	7.5 lbs.	8.5 lbs.
TT-3660	36" x 60"	17.0 lbs.	21.0 lbs.

**CUSTOM SIZES** – available in lengths up to 60 lin. Ft.

Stock No.	Widths	Wt./Lin. Ft. 1/2"	Wt./Lin Ft. 7/8"
TT-R24	24"	2.4 lbs.	2.8 lbs.
TT-R36	36"	3.6 lbs.	4.2 lbs.
TT-R48	48"	4.8 lbs.	5.6 lbs.
TT-R60	60"	6.0 lbs.	7.0 lbs.
TT-R72	72" Seamed	7.2 lbs.	8.4 lbs.
TT-R96	96" Seamed	9.6 lbs.	11.2 lbs.

**Colors:** Brown, Gray, Tan, Charcoal, Sandalwood, Blue, Black/White. (60" in Solid Black only.)

7/8" Thick/Double Sponge (DS)



Blue



Solid Black



Brown



Black/White



Tan



Gray



Charcoal

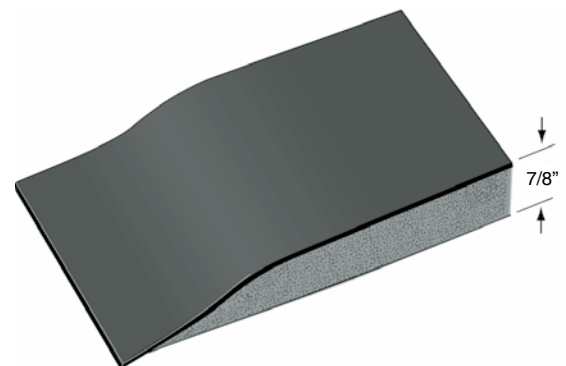
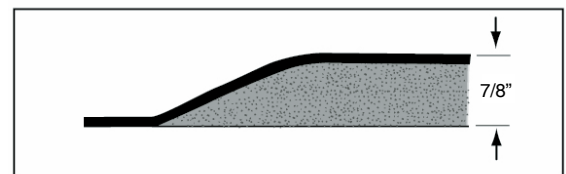


Sandalwood



## XTRA-FLEX

- Xtra-Flex was developed to give a significant advantage when competing with a polyurethane product. The challenge was manufacturing a softer mat with the necessary rebound properties while maintaining the wear characteristics that are the hallmark of Rhino Mats.
- Every foot movement on an Xtra-Flex mat is absorbed by the Xtra-Flex Microcellular Foam base to reduce any impact effects. It springs back to deliver that small amount of energy back to the feet and provides a vitality that stimulates good circulation, the essence of a healthful life.
- The Xtra-Flex rebound properties and resiliency are backed by a five year performance guarantee.
- Xtra-Flex anti-fatigue mats are a full 7/8" thick, double the thickness of ordinary mats.



XTRA-FLEX		
Stock No.	Size	Weight Ea.
XF-2436	2' x 3'	9.0 lbs.
XF-3660	3' x 5'	23.0 lbs.
XF-310	3' x 10'	45.0 lbs.
XF-320	3' x 20'	90.0 lbs.
CUSTOM SIZES – AVAILABLE IN LENGTHS UP TO 75 LN. FT.		
Stock No.	Widths	Weight /Lin. Ft.
XF-24	24"	3.0 lbs.
XF-36	36"	4.4 lbs.
XF-48	48"	5.5 lbs.
XF-60	60"	7.5 lbs.
Color: Black Only. 7/8" Thick.		