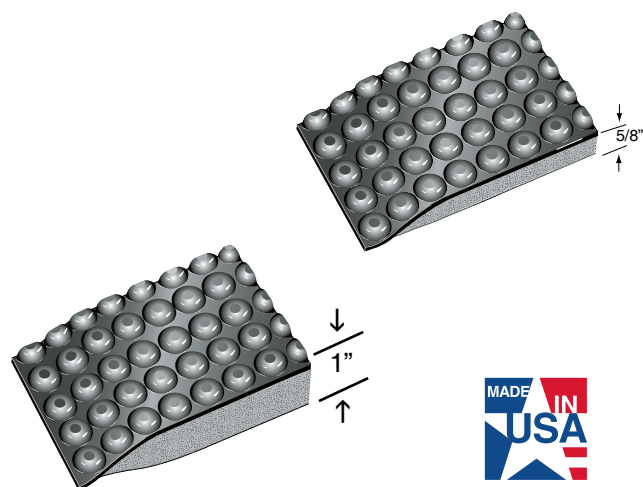




REFLEX CONDUCTIVE ANTI-FATIGUE MATS

- Reflex Anti-fatigue mats blend of resilient sponge base with a unique molded domed surface provide the simplest and most effective way to reduce standing worker fatigue and dissipate static electricity before it can be a problem.
- The sponge base encourages subtle movement of leg and calf muscles which in turn promote blood flow back to the heart.
- The domed surface of the mat provides a simple manipulation of areas of the feet. This in turn relieves tension and breaks up patterns or stress in other parts of the body to an amazing extent.
- Resistivity: Less than 10^6 OHMS, test method ESD-5.7.1 1994
- Reflex Anti-Fatigue mats are available in two styles. The Heavy Duty style is 5/8" thick and the Super Duty is a full 1" thick. Both styles are available in individual mats or full roll lengths of 24", 36" and 48" widths. All edges are beveled and sealed for safety and durability.
- Conductive matting should always be used with a ground cord.
- Use ground cord AA-107 to connect all ESD mats to a building ground or an electrical outlet, using the screw that secures the outlet cover as the attachment point.
- Patent D543765.



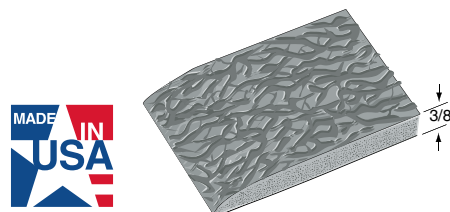
REFLEX ELECTRICALLY CONDUCTIVE ANTI-FATIGUE MATS			
For 1" mats, add "DS" to stock number			
Stock No.	Sizes	Weight Ea. 5/8"	Weight Ea. 1"
RLXC-2436	2' x 3'	9.0 lbs.	12.0 lbs.
RLXC-3660	3' x 5'	23.0 lbs.	30.0 lbs.
Custom Sizes-available in lengths up to 75 lin. Ft.			
Stock No.	Widths	Wt./Lin. Ft. 5/8"	Wt./Lin. Ft. 1"
RLXC-24	24"	3.0 lbs.	3.8 lbs.
RLXC-36	36"	5.0 lbs.	6.0 lbs.
RLXC-48	48"	6.7 lbs.	8.0 lbs.
RLXC-72	72" Seamed	10.0 lbs.	12.0 lbs.
RLXC-96	96" Seamed	13.4 lbs.	16.0 lbs.
Color: Black			

COMFORT STEP® ESD Static Dissipative Anti-Fatigue Mats



COMFORT STEP ESD STATIC DISSIPATIVE ANTI-FATIGUE MATS

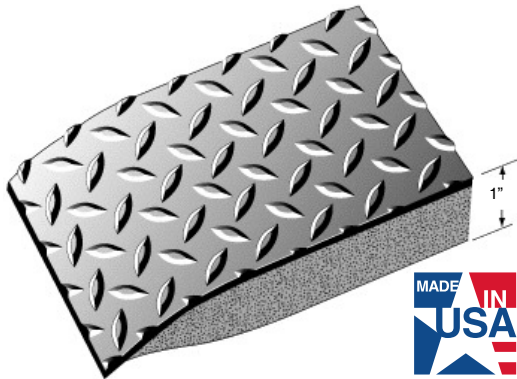
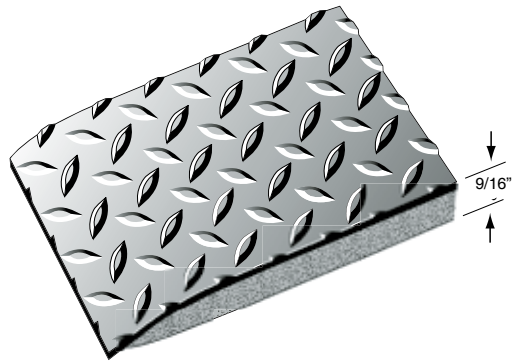
- Comfort Step ESD is a budget priced static dissipative sponge vinyl, anti-fatigue mat which prevents the accumulation of damaging static in environments where ESD protection is needed.
- Comfort Step ESD is a cross-linked vinyl-nitril resilient sponge. 3/8" overall thickness with pebble-textured top surface and beveled edges.
- Resistivity: Less than 10^9 OHMS, test method ESD-S7.1 1994.
- The surface of static dissipative matting should always be kept clean.



3/8" THICK STATIC DISSIPATIVE MATS		
Stock No.	Sizes	App. Weight
CSE-2436	24" x 36"	7.0 lbs.
CSE-3660	36" x 60"	13.0 lbs.
3/8" THICK STATIC DISSIPATIVE RUNNERS		
Stock No.	Sizes	App. Wt./Lin. Ft.
CSE-36	3' x 60'	2.7 lbs.
CSE-48	4' x 60'	3.6 lbs.
Color: Gray		



CONDUCTIVE DIAMOND™ Anti-Fatigue Mats



CONDUCTIVE DIAMOND PLATE ANTI-FATIGUE

- Disperse static electricity from an operator the moment they step on the mat and safely away from sensitive equipment.
- 5/32" thick electrically conductive diamond plate surface with a resilient closed cell polymeric sponge base.
- Your choice: 9/16" or 1" overall thickness with beveled edges.
- Resistivity: Less than 10^6 OHMS, test method ESD-S7.1 1994.
- Conductive matting should always be used with a ground cord, and the surface kept clean.
- Use ground cord AA-107 to connect all ESD mats to a building ground or an electrical outlet, using the screw that secures the outlet cover as the attachment point.

CONDUCTIVE DIAMOND PLATE ANTI-FATIGUE

For 1" mats, add "DS" to stock number

Stock No.	Sizes	Weight Ea. 9/16"	Weight Ea. 1"
ECD-2436TT	2' x 3'	9.0 lbs.	12.0 lbs.
ECD-3660TT	3' x 5'	23.0 lbs.	30.0 lbs.

Custom Sizes - available in lengths up to 75 lin. ft.

Stock No.	Width	Weight/Lin.Ft. 9/16"	Wt./Lin.Ft. 1"
ECD-36TT	36"	5.0 lbs.	6.0 lbs.
ECD-48TT	48"	6.7 lbs.	8.0 lbs.
ECD-72TT	72" Seamed	10.0 lbs.	12.0 lbs.
ECD-96TT	96" Seamed	13.4 lbs.	16.0 lbs.

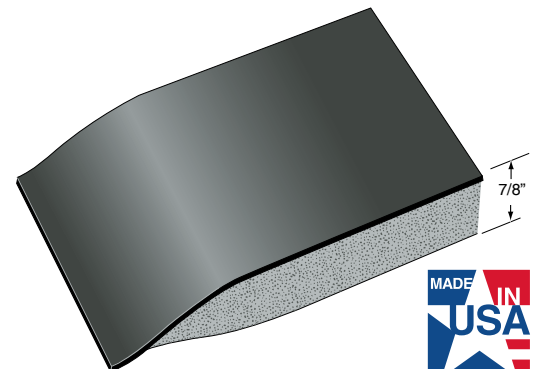
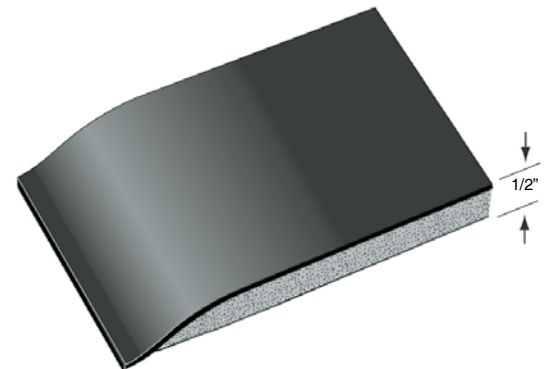
Color: Black. 1" Thick/Double Sponge Option. (DS)



CONDUCTIVE SMOOTH TOP™ Anti-Fatigue Mats

CONDUCTIVE SMOOTH TOP ANTI-FATIGUE

- Prevent the accumulation of static electricity by quickly draining it from operators and eliminate the hazards of data loss or the damaging of micro-circuitry equipment.
- 1/8" thick conductive smooth surface with a resilient closed cell polymeric sponge base.
- Your choice: 1/2" or 7/8" overall thickness with beveled edges.
- Resistivity: Less than 10^6 OHMS, test method ESD-S7.1 1994.
- Conductive matting should always be used with a ground cord, and the surface kept clean.
- Use ground cord AA-107 to connect all ESD mats to a building ground or an electrical outlet, using the screw that secures the outlet cover as the attachment point.



CONDUCTIVE SMOOTH TOP ANTI-FATIGUE

For 7/8" mats, add "DS" to stock number

Stock No.	Sizes	Weight Ea. 1/2"	Weight Ea. 7/8"
CS-2436TT	2' x 3'	9.0 lbs.	12.0 lbs.
CS-3660TT	3' x 5'	23.0 lbs.	30.0 lbs.

Custom Sizes - available in lengths up to 75 lin. Ft.

Stock No.	Widths	Wt./Lin. Ft. 1/2"	Wt./Lin. Ft. 7/8"
CS-36TT	36"	4.5 lbs.	6.0 lbs.
CS-48TT	48"	6.0 lbs.	8.0 lbs.
CS-72TT	72" Seamed	9.0 lbs.	12.0 lbs.
CS-96TT	96" Seamed	12.0 lbs.	16.0 lbs.

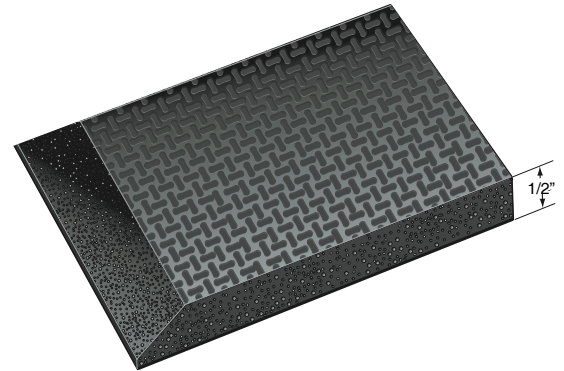
Color: Black Only 7/8" Thick/Double Sponge (DS)

POLARIS DISSIPATIVE SPONGE Anti-Fatigue Mats



POLARIS STATIC DISSIPATIVE SPONGE ANTI-FATIGUE

- The Polaris advantage: "Top to Bottom" static dissipative properties at less than 10^7 OHMS. Ground cords are an option when used on a properly ground floor.
- 1/2" thick closed-cell polymeric sponge PVC/NBR - resilient, 25% compression deflection (psi) ASTM D 1056 - 5.0-9.0.
- Textured both sides.
- Provides the combination of reliable long-term protection from static discharge and the simple effective way to reduce standing worker fatigue.
- Standard and custom sizes available, all edges beveled, lay-flat formulation.



POLARIS STATIC DISSIPATIVE SPONGE ANTI-FATIGUE

Stock No.	Sizes	Weight Ea.
PC-2436	2' x 3'	9.0 lbs.
PC-3660	3' x 5'	23.0 lbs.
Custom Sizes -available in lengths up to 75 lin. Ft.		
Stock No.	Widths	Wt./Lin. Ft.
PC-36	36"	4.5 lbs.

Color: Black Only. 1/2" Thick.

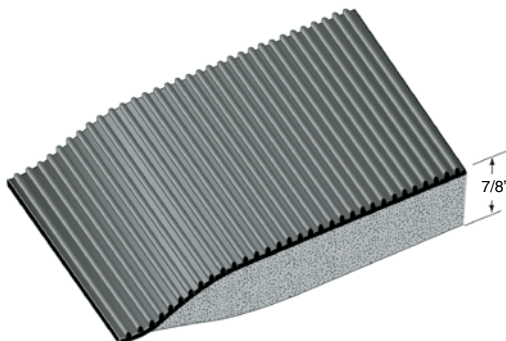
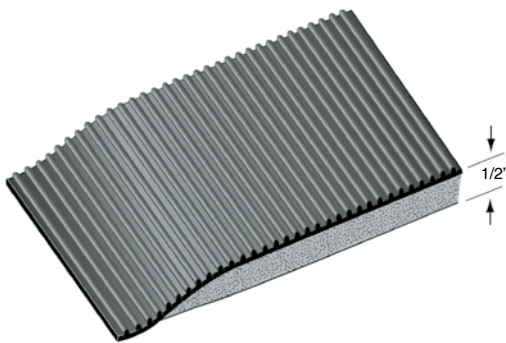


STATIC DISSIPATIVE CORRUGATED™ Anti-Fatigue Mats



STATIC DISSIPATIVE CORRUGATED ANTI-FATIGUE

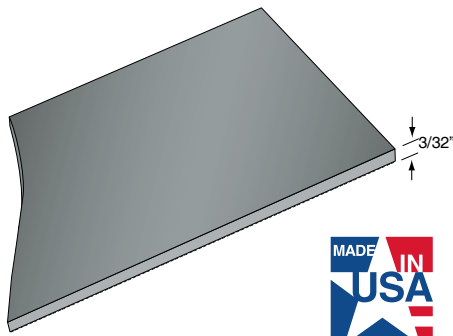
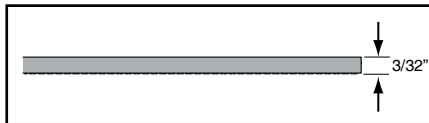
- Drain harmful static electricity from personnel, safeguard sensitive electronic equipment.
- 1/8" thick static dissipative corrugated surface with a resilient closed cell polymeric sponge base.
- Your choice: 1/2" or 7/8" overall thickness with beveled edges.
- Resistivity: Less than 10^7 OHMS, test method ESD-S7.1 1994.
- Static dissipative matting should always be used with a ground cord.
- Use ground cord AA-107 to connect all ESD mats to a building ground or an electrical outlet, using the screw that secures the outlet cover as the attachment point.



STATIC DISSIPATIVE CORRUGATED ANTI-FATIGUE

For 7/8" mats, add "DS" to stock number			
Stock No.	Sizes	Weight Ea. 1/2"	Weight Ea. 7/8"
SDC-2436TT	2' x 3'	9.0 lbs.	12.0 lbs.
SDC-3660TT	3' x 5'	23.0 lbs.	30.0 lbs.
Custom Sizes -available in lengths up to 75 lin. Ft.			
Stock No.	Widths	Wt./Lin. Ft. 1/2"	Wt./Lin. Ft. 7/8"
SDC-36TT	36"	4.5 lbs.	6.0 lbs.
SDC-72TT	72" Seamed	9.0 lbs.	12.0 lbs.

Color: Black Only 7/8" Thick/Double Sponge (DS)

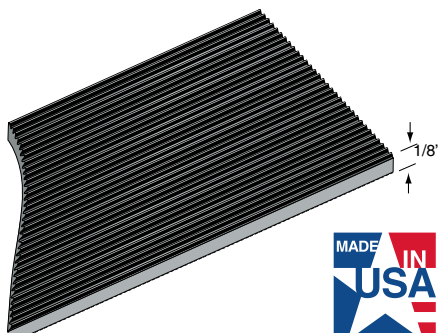
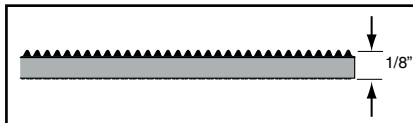


CONDUCTIVE SMOOTH TOP WORK SURFACE AND RUNNER

- 3/32" thick conductive smooth surface.
- Resistivity: Less than 10^6 OHMS, test method ESD-S7.1 1994
- Conductive matting should always be used with a ground cord, and the surface kept clean.

CONDUCTIVE SMOOTH TOP

Stock No.	Sizes	Weight/Lin. Ft.
CS36	3/32" x 36" x 75'	2.70 lbs.
CS48	3/32" x 48" x 75'	3.43 lbs.
Cut lengths available up to 75' ft.		
Color: Black. 3/32" Thick.		

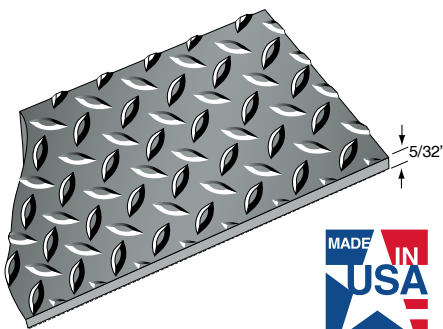
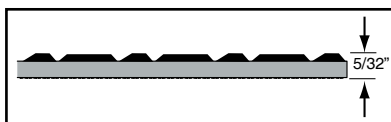


STATIC DISSIPATIVE CORRUGATED RUNNER

- 1/8" thick static dissipative, corrugated surface.
- Resistivity: Less than 10^7 OHMS, test method ESD-S7.1 1994
- Static dissipative matting should always be used with a ground cord.

STATIC DISSIPATIVE CORRUGATED RUNNER

Stock No.	Sizes	Weight/Lin. Ft.
SDC36	1/8" x 36" x 75'	2.23 lbs.
Cut lengths available up to 75' ft.		
Color: Black. 1/8" Thick.		



CONDUCTIVE DIAMOND PLATE RUNNER

- Disperse static electricity from an operator the moment they step on the mat and safely away from sensitive equipment.
- 5/32" thick electrically conductive diamond plate surface.
- Resistivity: Less than 10^6 OHMS, test method ESD-S7.1 1994.
- Conductive matting should always be used with a ground cord, and the surface kept clean.

CONDUCTIVE DIAMOND PLATE RUNNER

Stock No.	Size	Weight/Lin.Ft.
ECD36	5/32" x 36" x 75'	2.70 lbs.
ECD48	5/32" x 48" x 75'	3.43 lbs.
Cut lengths available up to 75 ft.		
Color: Black. 5/32" Thick.		



CORRUGATED RUNNER

- Deep V-groove liner pattern, primarily for non-slip applications.
- Also provides floor protection for high traffic areas.
- Helps remove dirt and mud from shoes with only routine maintenance using a broom.

CORRUGATED RUNNER MATTING

Stock No.	Sizes	Wt./Ln. Ft.
1CV24	1/8" x 24" x 105'	1.50 lbs.
1CV36	1/8" x 36" x 105'	2.23 lbs.
1CV48	1/8" x 48" x 105'	2.86 lbs.
1CV72	1/8" x 72" x 105'	4.46 lbs.
Color: Black. 1/8" Thick.		
Stock No.	Sizes	Wt./Ln. Ft.
2CV36	3/16" x 36" x 75'	4.00 lbs.
2CV48 Black only	3/16" x 48" x 75'	5.33 lbs.
Color: Black, Marine Blue, Orange. 3/16" Thick.		
Stock No.	Sizes	Wt./Ln. Ft.
3CV24	1/4" x 24" x 75'	3.66 lbs.
3CV36	1/4" x 36" x 75'	5.33 lbs.
3CV48	1/4" x 48" x 75'	6.66 lbs.
Color: Black. 1/4" Thick.		



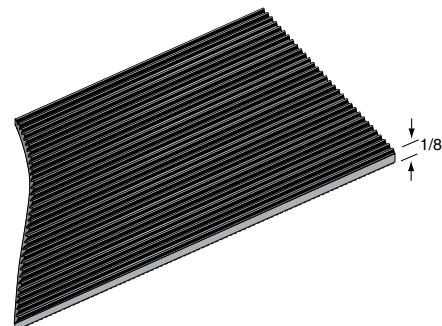
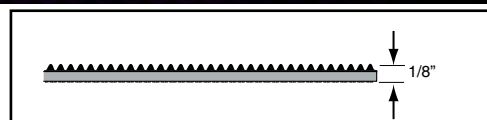
Black



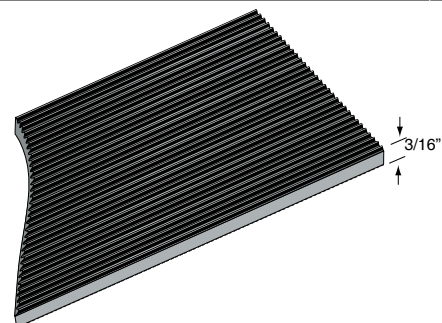
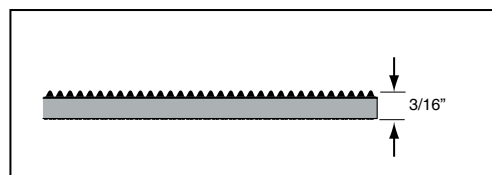
Orange (3/16" only)



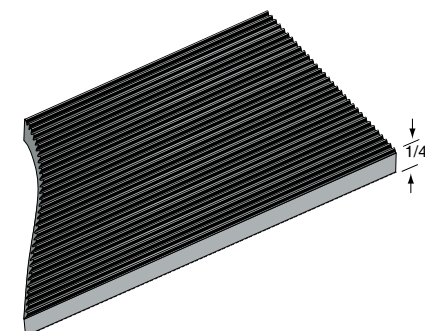
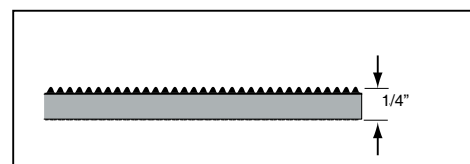
Marine Blue (3/16" only)



- **1/8" thick:** Medium duty corrugated, highly versatile, economical and easily cut to size.



- **3/16" thick:** Heavy duty corrugated, the lightness and flexibility of regular corrugated, but will deliver longer life. Marine blue and orange colors available.



- **1/4" thick:** Super duty corrugated: this double-thickness matting provides dependable and long-lasting service in severe wear areas.





CORRUGATED RUNNER

- Deep V-groove liner pattern, primarily for non-slip applications.
- Also provides floor protection for high traffic areas.
- Helps remove dirt and mud from shoes with only routine maintenance using a broom.

CORRUGATED RUNNER MATTING

Stock No.	Sizes	Wt./Ln. Ft.
1CV24	1/8" x 24" x 105'	1.50 lbs.
1CV36	1/8" x 36" x 105'	2.23 lbs.
1CV48	1/8" x 48" x 105'	2.86 lbs.
1CV72	1/8" x 72" x 105'	4.46 lbs.
Color: Black. 1/8" Thick.		
Stock No.	Sizes	Wt./Ln. Ft.
2CV36	3/16" x 36" x 75'	4.00 lbs.
2CV48 Black only	3/16" x 48" x 75'	5.33 lbs.
Color: Black, Marine Blue, Orange. 3/16" Thick.		
Stock No.	Sizes	Wt./Ln. Ft.
3CV24	1/4" x 24" x 75'	3.66 lbs.
3CV36	1/4" x 36" x 75'	5.33 lbs.
3CV48	1/4" x 48" x 75'	6.66 lbs.
Color: Black. 1/4" Thick.		



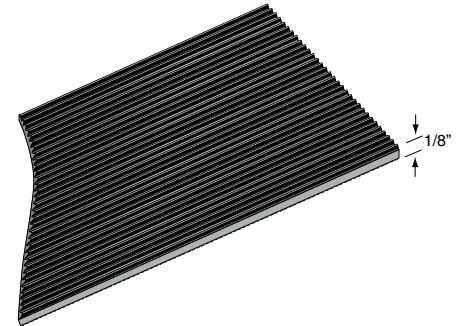
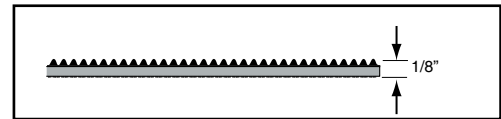
Black



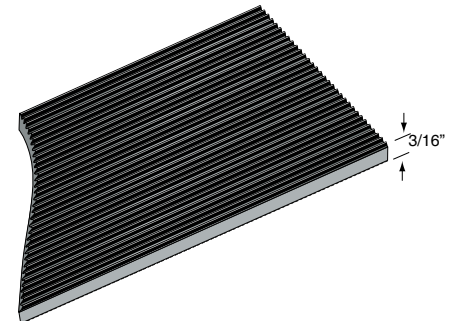
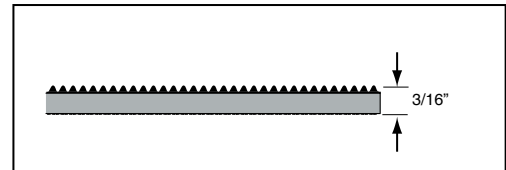
Orange (3/16" only)



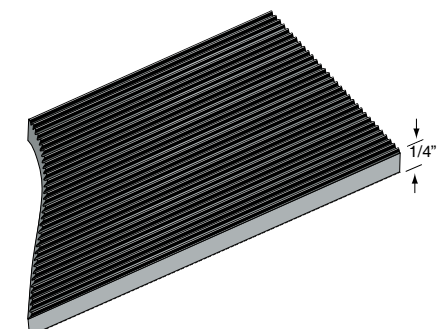
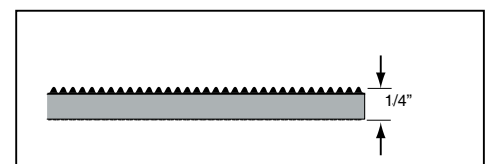
Marine Blue (3/16" only)



- **1/8" thick:** Medium duty corrugated, highly versatile, economical and easily cut to size.

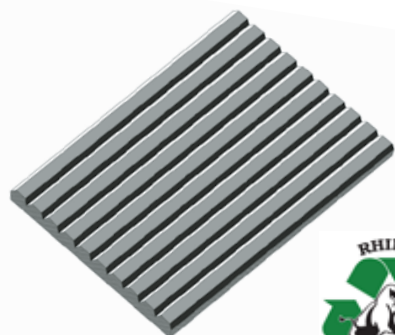


- **3/16" thick:** Heavy duty corrugated, the lightness and flexibility of regular corrugated, but will deliver longer life. Marine blue and orange colors available.



- **1/4" thick:** Super duty corrugated: this double-thickness matting provides dependable and long-lasting service in severe wear areas.



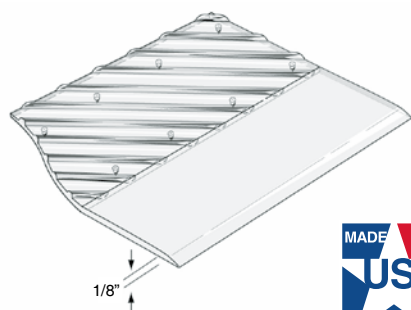
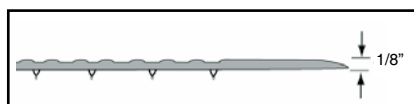


TRITAN® PERMA WALK

- Here's a mat designed with one quarter inch wide flat corrugations running parallel to the length of the mat for easy sweeping and cleaning.
- Reduces slipping and falls in heavy traffic areas, aisles, locker rooms and assembly areas.
- Built-in resistance to constant abuse, a characteristic of Tritan construction, assures you years of service (Products from regrind may have an occasional blemish).

TRITAN PERMA WALK 1/4" THICK

Stock No.	Sizes	Wt./Lin. Ft.
TPW36	1/4" x 36" x 75'	4.7 lbs.
TPW48	1/4" x 48" x 75'	6.3 lbs.
Color: Black. 1/4" Thick,		

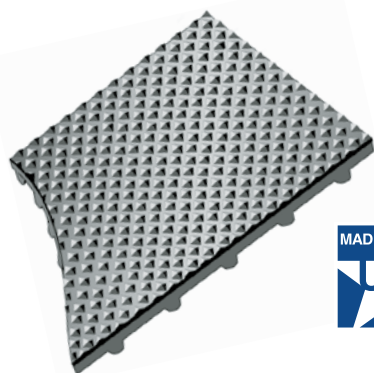
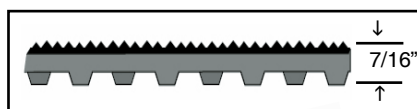


TRANSPARENT GRIPPER BACK RUNNER

- Attractive, tough, transparent carpet protection.
- Stops carpetwear, prevents soilings, lets carpet beauty show through 100% virgin vinyl. Resists puncturing... virtually indestructible.
- Nonskid ribbed surface...cleans easily...3" tapered edge helps avoid tripping.
- Stays put on loop pile carpet.
- Wherever commercial loop pile carpeting needs protection from abrasive wear of concentrated foot-traffic lanes.

TRANSPARENT GRIPPER BACK RUNNER

Stock No.	Size	Wt./Lin. Ft.
27GBR	1/8" x 27" x 60'	.85 lbs.
36GBR	1/8" x 36" x 60'	1.45 lbs.
48GBR	1/8" x 48" x 60'	1.90 lbs.
Color: Clear. 1/8" Thick.		



PYRAMID TOP-KNOB BACK RECESS MAT

- Pyramid Top-Knob Back was designed to provide a low cost recess mat in airports, schools and public buildings where efficiency and economy are top priority.
- Pyramid Top-Knob Back is made from highly resilient recycled PVC compound with a molded non-directional pattern consisting of sharply pointed pyramids covering the entire surface, offering traction, durability and ease of cleaning for many years even under the heaviest traffic conditions.
- Pyramid pattern is 1/16" deep and spaced 1/4" point to point. Overall thickness is 7/16". Custom lengths or full rolls up to 30". Edges are square for recess or can be beveled for surface use.

PYRAMID TOP-KNOB BACK 7/16" THICK

Stock No.	Sizes	Wt./Lin. Ft.
PTKB-36	36" x 25'	4.7 lbs.
PTKB-48	48" x 25'	6.3 lbs.
PTKB-72	72" x 25'	9.4 lbs.
PTKB-96	96" x 25'	12.5 lbs.

Colors: Burgundy, Black, Lt. Gray, Dk. Gray, Brown, Tan, Navy Blue, Forest Green. Add "SB" for smooth back. 7/16" Thick.



BURGUNDY



BLACK



LT. GRAY



DK. GRAY



BROWN



TAN



NAVY BLUE



FOREST GREEN