

## Narrow Stainless Steel Mobile Cabinets

**Models YF, YS, YT – Stainless steel mobile cabinets with drawer(s) and/or door**

**1,200 LB CAPACITY**



Model YF Shown

**1,200 LB CAPACITY**



Model YS Shown

**1,200 LB CAPACITY**



Model YT Shown

### Product Features:

- All welded construction (except casters).
- **Stainless with premium #4 polished shelves** in durable **16 gauge**.
- **Lockable Stainless Drawer(s)** (4-1/4"h x 16"w x 16"d) with 2 keys (Models YF & YS only).
- 3 sided 16 gauge stainless sheet construction.
- Stainless door with lockable handle and two keys (Models YS & YT only).
- Stainless caster mounts for bolt on casters, all swivel.
- Steel or stainless caster rigs.
- Top shelf - flush front lip with other 3 sides lips up.
- Dimensions:

Mobile Cabinet	Top Shelf Height	Clearance Between Shelves
YF	34"	N/A
YS	34"	18"
YT	34"	24"

### Options:

- 2 wheel brakes on swivel casters -  
Caster Type .....**Brake Code**  
U5/T5 .....**B5**  
S5 .....**BX**
- Middle shelf (except Model YF) - **Code HM**
- Vinyl matting on top shelf - **Code VM**
- Front leg "L" bumpers - **Code LB**

### Model YF – Mobile Cabinet with 4 Drawers

WxL (in)	5" Urethane Casters Cat. No.'s		5" Thermorubber Casters Cat. No.	
	Steel Rig	Stainless Rig	Steel Rig	Wgt. (lbs)
18 x 18	YF118-U5-AS	YF118-S5-AS	YF118-T5-AS	160

### Model YS – Mobile Closed Cabinet with 1 Drawer & 1 Door

WxL (in)	5" Urethane Casters Cat. No.'s		5" Thermorubber Casters Cat. No.	
	Steel Rig	Stainless Rig	Steel Rig	Wgt. (lbs)
18 x 18	YS118-U5-AS	YS118-S5-AS	YS118-T5-AS	98

### Model YT – Mobile Closed Cabinet with 1 Door

WxL (in)	5" Urethane Casters Cat. No.'s		5" Thermorubber Casters Cat. No.	
	Steel Rig	Stainless Rig	Steel Rig	Wgt. (lbs)
18 x 18	YT118-U5-AS	YT118-S5-AS	YT118-T5-AS	88

# Open Stainless Steel Mobile Cabinets and Carts

## Models YK, YC, YR - Stainless mobile cabinets and carts

1,200 LB CAPACITY



Model YK Shown

1,200 LB CAPACITY



Model YC Shown

1,200 LB CAPACITY



Model YR Shown

### Product Features:

- All welded construction (except casters).
- **Stainless with premium #4 polished shelves** in durable **16 gauge**.
- **Lockable Stainless drawers** (4-1/4" h x 16" w x 16" d) with 2 keys (Models YK & YR only).
- 1-1/2" stainless corner posts (Model YR only).
- 3 sided 16 gauge stainless sheet construction (Models YK & YC only).
- Stainless caster mounts for bolt on casters, 2 swivel & 2 rigid, for superior tracking.
- Steel or stainless caster rigs.
- Top shelf - flush front lip with other three sides up.

### Dimensions:

Cabinet Model	Overall Height	Clearance Between Shelves
YK .....	34"	18"
YC .....	34"	11"
YR .....	34"	18"

### Options:

- 2 wheel brakes on swivel casters -  
Caster Type ..... **Brake Code**  
U5/T5 ..... **B5**  
S5 ..... **BX**
- All swivel casters - **Code AS**
- Vinyl matting on top shelf - **Code VM**
- Front leg "L" bumpers - **Code LB**

### Model YK – Mobile Cabinet with 2 Drawers

WxL (in)	5" Urethane Casters Cat. No.'s		5" Thermorubber Casters Cat. No.	
	Steel Rig	Stainless Rig	Steel Rig	Wgt. (lbs)
18 x 36	YK136-U5	YK136-S5	YK136-T5	140
24 x 36	YK236-U5	YK236-S5	YK236-T5	150

### Model YC – Mobile Cabinet with 3 Shelves

WxL (in)	5" Urethane Casters Cat. No.'s		5" Thermorubber Casters Cat. No.	
	Steel Rig	Stainless Rig	Steel Rig	Wgt. (lbs)
18 x 18	YC118-U5	YC118-S5	YC118-T5	86
36	YC136-U5	YC136-S5	YC136-T5	110
24 x 36	YC236-U5	YC236-S5	YC236-T5	120

### Model YR – Mobile Cart with 2 Drawers

WxL (in)	5" Urethane Casters Cat. No.'s		5" Thermorubber Casters Cat. No.	
	Steel Rig	Stainless Rig	Steel Rig	Wgt. (lbs)
18 x 36	YR136-U5	YR136-S5	YR136-T5	120
24 x 36	YR236-U5	YR236-S5	YR236-T5	130

Made in U.S.A.



# Closed Stainless Steel Mobile Cabinets

## Models YW, YZ, YV - Stainless mobile cabinets

1,200 LB CAPACITY



Model YW Shown

1,200 LB CAPACITY



Model YZ Shown

1,200 LB CAPACITY



Model YV Shown

### Product Features:

- All welded construction (except casters).
- **Stainless with premium #4 polished shelves** in durable 16 gauge.
- Stainless doors with lockable handles and two keys.
- **Lockable Stainless Drawers** (4-1/4" h x 16" w x 16" d) with 2 keys (Model YV only).
- Three sided 16 gauge stainless sheet construction.
- Stainless caster mounts for bolt on casters, 2 swivel & 2 rigid (for superior tracking).
- Steel or stainless caster rigs.
- Top shelf - flush front lip with other three sides up.

### Dimensions:

Cabinet Model	Overall Height	Clearance Between Shelves
YW .....	34"	24"
YZ .....	34"	11"
YV .....	34"	18"

### Options:

- 2 wheel brakes on swivel casters -  
Caster Type ..... **Brake Code**  
U5/T5 ..... **B5**  
S5 ..... **BX**
- All swivel casters - **Code AS**
- Middle shelf (Model YV only) - **Code SM**
- Vinyl matting on top shelf - **Code VM**
- Front leg "L" bumper - **Code LB**

### Model YW – Mobile Cabinet with 2 Doors

WxL (in)	5" Urethane Casters Cat. No.'s		5" Thermorubber Casters Cat. No.	
	Steel Rig	Stainless Rig	Steel Rig	Wgt. (lbs)
18 x 36	YW136-U5	YW136-S5	YW136-T5	126
24 x 36	YW236-U5	YW236-S5	YW236-T5	136

### Model YZ – Mobile Cabinet with 2 Doors & Middle Shelf

WxL (in)	5" Urethane Casters Cat. No.'s		5" Thermorubber Casters Cat. No.	
	Steel Rig	Stainless Rig	Steel Rig	Wgt. (lbs)
18 x 36	YZ136-U5	YZ136-S5	YZ136-T5	140
24 x 36	YZ236-U5	YZ236-S5	YZ236-T5	150

### Model YV – Mobile Cabinet with 2 Drawers & 2 Doors

WxL (in)	5" Urethane Casters Cat. No.'s		5" Thermorubber Casters Cat. No.	
	Steel Rig	Stainless Rig	Steel Rig	Wgt. (lbs)
18 x 36	YV136-U5	YV136-S5	YV136-T5	156
24 x 36	YV236-U5	YV236-S5	YV236-T5	166

# Closed Stainless Steel Mobile Cabinets

## Models YX, YY, ZO - Stainless mobile cabinets

1,200 LB CAPACITY



Model YX Shown

1,200 LB CAPACITY



Model YY Shown

1,200 LB CAPACITY



Model ZO Shown

### Product Features:

- All welded construction (except casters).
- **Stainless with premium #4 polished shelves** in durable 16 gauge.
- Stainless door with lockable handle with two keys.
- **Lockable Stainless Drawer(s)** (4-1/4"h x 16"w x 16"d) with 2 keys.
- Three sided 16 gauge stainless sheet construction.
- Stainless caster mounts for bolt on casters, 2 swivel & 2 rigid.
- Steel or stainless caster rigs.
- Top shelf - flush front lip with other three sides up.
- Dimensions:

Cabinet Model	Overall Height	Clearance Between Shelves Behind Door	Clearance Between Drawer And Shelf
YX	34"	24"	18"
YY	34"	24"	N/A
ZO	34"	N/A	N/A

### Options:

- 2 wheel brakes on swivel casters -  
Caster Type .....**Brake Code**  
U5/T5 .....**B5**  
S5 .....**BX**
- All swivel casters - **Code AS**
- Vinyl matting on top shelf - **Code VM**
- Front leg "L" bumpers - **Code LB**
- Middle shelf behind door - **Code HM**

### Model YX – Mobile Cabinet with 1 Door & 1 Drawer

WxL (in)	5" Urethane Casters Cat. No.'s		5" Thermorubber Casters Cat. No.	
	Steel Rig	Stainless Rig	Steel Rig	Wgt. (lbs)
18 x 36	YX136-U5	YX136-S5	YX136-T5	140
24 x 36	YX236-U5	YX236-S5	YX236-T5	150

### Model YY – Mobile Cabinet with 4 Drawers & 1 Door

WxL (in)	5" Urethane Casters Cat. No.'s		5" Thermorubber Casters Cat. No.	
	Steel Rig	Stainless Rig	Steel Rig	Wgt. (lbs)
18 x 36	YY136-U5	YY136-S5	YY136-T5	200
24 x 36	YY236-U5	YY236-S5	YY236-T5	210

### Model ZO – Mobile Cabinet with 8 Drawers

WxL (in)	5" Urethane Casters Cat. No.'s		5" Thermorubber Casters Cat. No.	
	Steel Rig	Stainless Rig	Steel Rig	Wgt. (lbs)
18 x 36	ZO136-U5	ZO136-S5	ZO136-T5	280
24 x 36	ZO236-U5	ZO236-S5	ZO236-T5	290





# Stainless Steel Plastic Tote Box Trucks

## Models YH, YA, YQ - Plastic Tote Box Trucks

100 LB CAPACITY per Tote



Model YH Shown

100 LB CAPACITY per Tote



Model YA Shown

100 LB CAPACITY per Tote



Model YQ Shown

### Product Features:

- All welded construction (except casters).
- 16 gauge flush stainless bottom pan with stainless caster mounts.
- 1" square stainless tube with stainless angle tote support rails.
- Bolt on 5" urethane casters, all swivel.
- Clearance between tote supports - 10".
- Overall height - 42" (Models YH & YA) & 72" (Model YQ).
- Totes - 25-1/8"d x 16"w x 8-1/2"h (blue).

### Options:

- 2 wheel brakes on swivel casters -  
Caster Type .....Brake Code  
U5/T5 .....B5  
S5 .....BX

### Model YH – 3 Plastic Tote Box Truck

WxL (in)	5" Urethane Casters Cat. No.'s		5" Thermorubber Casters Cat. No.	
	Steel Rig	Stainless Rig	Steel Rig	Wgt. (lbs)
26 x 18	YH218-U5-AS	YH218-S5-AS	YH218-T5-AS	60

### Model YA – 6 Plastic Tote Box Truck

WxL (in)	5" Urethane Casters Cat. No.'s		5" Thermorubber Casters Cat. No.	
	Steel Rig	Stainless Rig	Steel Rig	Wgt. (lbs)
26 x 36	YA236-U5-AS	YA236-S5-AS	YA236-T5-AS	100

### Model YQ – 12 Plastic Tote Box Truck



WxL (in)	5" Urethane Casters Cat. No.'s		5" Thermorubber Casters Cat. No.	
	Steel Rig	Stainless Rig	Steel Rig	Wgt. (lbs)
26 x 36	YQ236-U5-AS	YQ236-S5-AS	YQ236-T5-AS	154

# 1,800 lb Capacity Service & Transfer Carts & Platform Trucks

## Models YJ, YN, YM, YL - Heavy Duty Stainless Transporters

1,800 LB CAPACITY



Model YJ Shown

1,800 LB CAPACITY



Model YN Shown

1,800 LB CAPACITY



Model YM Shown

1,800 LB CAPACITY



Model YL Shown

### Product Features:

- All welded construction (except casters).
- Stainless with premium # 4 polished reinforced 16 gauge.
- 2" stainless corner angles (except model YL), and stainless caster mounts with "twin caster hole pattern" to mount various sized casters.
- Bolt on casters, 2 swivel & 2 rigid for superior tracking.
- Caster rigs available in steel or stainless with urethane wheels.
- Tubular handle with smooth radius bend (model YL's handle is removable and 30" above deck).
- 1-1/2" shelf lips (models YJ & YN), Lips flush (Models YM & YL).
- Cart shelf dimensions:

Cart Model	Top Shelf Height	Clearance Between Shelves
YJ .....	35"	25"
YN .....	35"	11"
YM .....	31"	20"
YL .....	10"	N/A

### Options:

- 2 wheel brakes on swivel casters -  
Caster Type .....**Brake Code**  
U6/T6 .....**B6**  
S6 .....**BY**
- All swivel casters - **Code AS**
- Vinyl matting on top shelf - **Code VM**
- Front leg "L" bumpers (except Model YL) - **Code LB**
- Other overall heights available (except Model YL) - **specify**
- Lockable stainless drawer (4-1/4"h x 16"w x 16"d) with 2 keys - **Code DZ** (Models YJ & YM only)

### Model YJ - Standard Handle - 2 shelf - 1,800 lbs cap

WxL (in)	6" Urethane Casters Cat. No.'s		6" Thermorubber Casters Cat. No.	
	Steel Rig	Stainless Rig	Steel Rig	Wgt. (lbs)
24 x 36	YJ236-U6	YJ236-S6	YJ236-T6	92
48	YJ248-U6	YJ248-S6	YJ248-T6	104
30 x 48	YJ348-U6	YJ348-S6	YJ348-T6	116
60	YJ360-U6	YJ360-S6	YJ360-T6	130

### Model YN - Standard Handle - 3 shelf - 1,800 lbs cap

WxL (in)	6" Urethane Casters Cat. No.'s		6" Thermorubber Casters Cat. No.	
	Steel Rig	Stainless Rig	Steel Rig	Wgt. (lbs)
24 x 36	YN236-U6	YN236-S6	YN236-T6	108
48	YN248-U6	YN248-S6	YN248-T6	126
30 x 48	YN348-U6	YN348-S6	YN348-T6	144
60	YN360-U6	YN360-S6	YN360-T6	164

### Model YM - Transfer cart - no handle - 1,800 lbs cap

WxL (in)	6" Urethane Casters Cat. No.'s		6" Thermorubber Casters Cat. No.	
	Steel Rig	Stainless Rig	Steel Rig	Wgt. (lbs)
24 x 36	YM236-U6	YM236-S6	YM236-T6	90
48	YM248-U6	YM248-S6	YM248-T6	102
30 x 48	YM348-U6	YM348-S6	YM348-T6	114
60	YM360-U6	YM360-S6	YM360-T6	128

### Model YL - Platform Truck with removable handle - 1,800 lbs cap

WxL (in)	6" Urethane Casters Cat. No.'s		6" Thermorubber Casters Cat. No.	
	Steel Rig	Stainless Rig	Steel Rig	Wgt. (lbs)
24 x 36	YL236-U6	YL236-S6	YL236-T6	76
48	YL248-U6	YL248-S6	YL248-T6	82
30 x 48	YL348-U6	YL348-S6	YL348-T6	90
60	YL360-U6	YL360-S6	YL360-T6	96



# 1,800 Lb Capacity Stainless Steel 3, 4, & 5 Shelf Stock Trucks

## Models XC, XD, XE - Heavy Duty Stainless transporters

1,800 LB CAPACITY



Model XC Shown

1,800 LB CAPACITY



Model XD Shown

1,800 LB CAPACITY



Model XE Shown

### Product Features:

- All welded construction (except casters).
- **Stainless with premium #4 polished shelves** in durable 16 gauge.
- 2" stainless corner angles and stainless caster mounts with "twin hole pattern" to mount various sized casters.
- Bolt on casters, 2 swivel & 2 rigid, for superior tracking.
- Caster rigs available in steel or stainless for urethane wheels.
- **Tubular handle** with smooth radius bend for comfort and uniform appearance.
- 1-1/2" shelf lips up for retention (see options for flush shelves).
- Cart shelf dimensions:

Model	Cart Height	Overall Height	Clearance Between Shelves
XC	47"	17"	
XD	53"	13"	
XE	60"	11"	

### Options:

- 2 wheel brakes on swivel casters -  
Caster Type .....**Brake Code**  
U6/T6 .....**B6**  
S6 .....**BY**
- All swivel casters - **Code AS**
- Ergonomic handle - **Code EH**
- Flush top shelf - **Code FT**
- All shelves flush - **Code FA**
- One side lip flush all shelves - **Code LA**
- Other shelf heights available - **specify**.
- Other casters available.

### Model XC - 3 Shelf Truck

WxL (in)	6" Urethane Casters Cat. No.'s		6" Thermorubber Casters Cat. No.	
	Steel Rig	Stainless Rig	Steel Rig	Wgt. (lbs)
18 x 30	XC130-U6	XC130-S6	XC130-T6	94
36	XC136-U6	XC136-S6	XC136-T6	100
24 x 36	XC236-U6	XC236-S6	XC236-T6	114
48	XC248-U6	XC248-S6	XC248-T6	132
30 x 48	XC348-U6	XC348-S6	XC348-T6	150
60	XC360-U6	XC360-S6	XC360-T6	170

### Model XD - 4 Shelf Truck

WxL (in)	6" Urethane Casters Cat. No.'s		6" Thermorubber Casters Cat. No.	
	Steel Rig	Stainless Rig	Steel Rig	Wgt. (lbs)
18 x 30	XD130-U6	XD130-S6	XD130-T6	108
36	XD136-U6	XD136-S6	XD136-T6	116
24 x 36	XD236-U6	XD236-S6	XD236-T6	134
48	XD248-U6	XD248-S6	XD248-T6	158
30 x 48	XD348-U6	XD348-S6	XD348-T6	182
60	XD360-U6	XD360-S6	XD360-T6	208

### Model XE - 5 Shelf Truck

WxL (in)	6" Urethane Casters Cat. No.'s		6" Thermorubber Casters Cat. No.	
	Steel Rig	Stainless Rig	Steel Rig	Wgt. (lbs)
24 x 36	XE236-U6	XE236-S6	XE236-T6	154
48	XE248-U6	XE248-S6	XE248-T6	184
30 x 48	XE348-U6	XE348-S6	XE348-T6	214
60	XE360-U6	XE360-S6	XE360-T6	246

# Fixed Stainless Steel Work Stands and Work Tables

## Models XW, YG, YE - Stainless steel work stands and work tables

1,200 LB CAPACITY



Model XW Shown

1,200 LB CAPACITY



Model YG Shown

1,200 LB CAPACITY



Model YE Shown

### Product Features:

- All welded construction.
- **Stainless with premium #4 polished shelves** in durable 16 gauge.
- Pre-punched mounting pads to floor.
- Dimensions:

Table Model	Top Shelf Height	Clearance Between Shelves
XW .....	30"	20"
YG .....	32"	10"
YE .....	35"	22"

### Other Specifications:

#### Model XW:

- 1-1/2" stainless corner posts.
- All shelves flush.

#### Model YG:

- 1-1/2" stainless corner posts.
- All shelves flush.
- Full middle stainless shelf.

#### Model YE:

- 2" stainless corner posts.
- Top shelf flush.
- Lower half shelf supported by angle on 2 sides.

### Options:

- Vinyl matting on top shelf - **Code VM**
- Lockable stainless drawer (4-1/4"h x 16"w x 16"d) with 2 keys - **Code DZ** (Models XW & YE only)
- Other top shelf heights available - specify.

### Model XW - Work Stand

DxW (in)	Cat. No.	Wgt. (lbs)
18 x 24	XW124	32
30	XW130	36
36	XW136	40
24 x 36	XW236	50
48	XW248	60

### Model YG - Work Stand with 3 Shelves

DxW (in)	Cat. No.	Wgt. (lbs)
18 x 24	YG124	38
30	YG130	44
36	YG136	50
24 x 36	YG236	62
48	YG248	76

### Model YE - Stainless Work Table

DxW (in)	Cat. No.	Wgt. (lbs)
24 x 48	YE248	60
30 x 60	YE360	80





## Fixed Narrow Stainless Steel Cabinets

**Models VW, VX, VY, XU – Stainless steel fixed cabinets with drawer(s) and/or door**

**1,200 LB CAPACITY**



Model VW Shown

**1,200 LB CAPACITY**



Model VX Shown

**1,200 LB CAPACITY**



Model VY Shown

**1,200 LB CAPACITY**



Model XU Shown

### Product Features:

- All welded construction.
- **Stainless with premium #4 polished shelves** in durable **16 gauge**.
- **Lockable Stainless Drawer(s)** (4-1/4" h x 16" w x 16" d) with 2 keys (except Model VY).
- 3 sided 16 gauge stainless sheet construction with 14 gauge feet (except Model XU).
- 1-1/2" stainless corner posts (Model XU only).
- Stainless door with lockable handle and two keys (Models VX & VY only).
- Top shelf - flush front lip with other 3 sides lips up.

### Dimensions:

Mobile Cabinet	Overall	Clearance
Model	Height	Between Shelves
VW .....	34"	N/A
VX .....	34"	18"
VY .....	34"	24"
XU .....	34"	9"

### Options:

- Middle shelf (Models VX & VY only) - **Code HM**
- Vinyl matting on top shelf - **Code VM**

### Model VW – Cabinet with 4 Drawers

WxL (in)	Cat. No.	Wgt. (lbs)
18 x 18	VW118	152

### Model VX – Closed Cabinet with 1 Drawer & 1 Door

WxL (in)	Cat. No.	Wgt. (lbs)
18 x 18	VX118	90

### Model VY – Closed Narrow Cabinet

WxL (in)	Cat. No.	Wgt. (lbs)
18 x 18	VY118	80

### Model XU - Work Stand with 1 Drawer

WxL (in)	Cat. No.	Wgt. (lbs)
18 x 18	XU118	76

# Fixed Closed Stainless Steel Cabinets

## Models ZP, ZU, ZV - Stainless steel fixed closed cabinets

1,200 LB CAPACITY



Model ZP Shown

### Product Features:

- All welded construction.
- **Stainless with premium #4 polished shelves** in durable 16 gauge.
- Stainless door with lockable handle with two keys.
- **Lockable Stainless Drawer(s)** (4-1/4" h x 16" w x 16" d) with 2 keys (except Model ZP).
- Three sided 16 gauge stainless sheet construction with 14 gauge feet.
- Top shelf - flush front lip with other three sides up.
- Dimensions:

Cabinet Model	Overall Height	Clearance
		Between Shelves Behind Door
ZP .....	34"	24"
ZU .....	34"	18"
ZV .....	34"	24"

### Options:

- Vinyl matting on top shelf - **Code VM**
- Middle shelf behind door - **Code SM** (Models ZP & ZU only)  
**Code HM** (Model ZV only)

1,200 LB CAPACITY



Model ZU Shown

### Model ZP – Fixed Cabinet with 2 Doors

WxL (in)	Cat. No.	Wgt. (lbs)
18 x 36	ZP136	118
24 x 36	ZP236	128

### Model ZU – Fixed Cabinet with 2 Drawers & 2 Doors

WxL (in)	Cat. No.	Wgt. (lbs)
18 x 36	ZU136	148
24 x 36	ZU236	158

1,200 LB CAPACITY



Model ZV Shown

### Model ZV – Fixed Cabinet with 4 Drawers & 1 Door

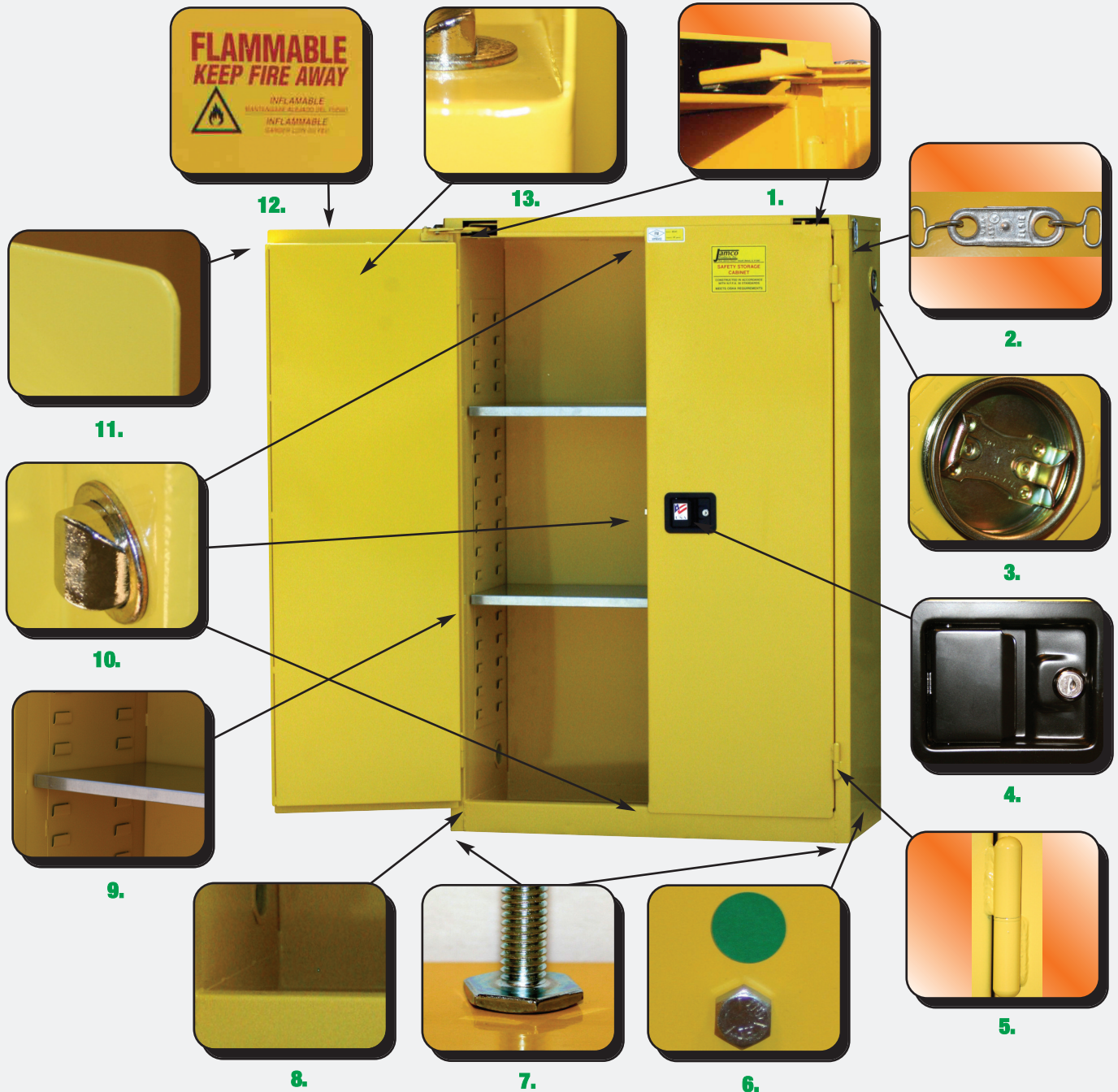
WxL (in)	Cat. No.	Wgt. (lbs)
18 x 36	ZV136	192
24 x 36	ZV236	202



# Jamco Heavy Duty Safety Cabinet Features

## More steel than other brands...FM Approved

14 gauge doors are 56% more steel than 18 gauge of others...superior weld hinges with brass pins...greater support for doors... Meet OSHA, NFPA code 30, UFC 79 standards, and are **FM APPROVED** flush handled...Powder Coated Yellow (Flammable), Red (Paint & Ink), Blue (Corrosive) & Green (Pesticides).



### FEATURES

- |   |  |
|---|--|
| <ul style="list-style-type: none"> <li>1. Concealed heavy duty self close mechanism</li> <li>2. Lead fusible link</li> <li>3. 2" flame arrester vents</li> <li>4. Flush Mounted paddle handle</li> <li>5. 4" Heavy Duty weld hinge with brass pin</li> <li>6. Grounding connector</li> <li>7. Adjustable leveling feet</li> </ul> | <ul style="list-style-type: none"> <li>8. 2" leak proof sump for spill containment</li> <li>9. 16 gauge louvered shelf supports to adjust shelves on 2-1/2" centers</li> <li>10. 3 point locking system</li> <li>11. Rounded safety corners on doors</li> <li>12. Safety signage in large red lettering</li> <li>13. Heavy Duty 14 gauge door</li> </ul> |
|---|--|





# Safety Flammable Cabinets (Cans) - 3 Door Types

**Models BM, BS, BF - manual, bi fold & self close doors with double wall cabinets to contain flammable liquids in protected storage**



Model BM90 Shown



Model BS60 Shown



Model BF45 Shown

## Product Features:

- All welded double wall 18 gauge construction with 1-1/2" insulating air space.
- 2" leakproof sill to contain leaks.
- Lockable flush mounted handle with 2 keys.
- Doors have 3 point locking system and radius edges.
- **Doors are double walled, 14 gauge outside & 18 gauge inside.**
- 4" heavy duty weld hinges with brass pins.
- Twin 2" flame arrester vents.
- Adjustable leveling feet and grounding connector.
- **Powder coated yellow finish** (see options).
- Safety signage in large red letters.
- Galvanized steel shelves adjust on 2-1/2" centers.
- Meets OSHA, and NFPA code 30 & UFC 79 standards.



## Three Door Types:

### Model BM - 2 Doors

- Manual close doors open full 180°.

### Model BS - 2 Doors

- Self close doors shut, index, latch automatically as fusible links melt under fire conditions at 165°.
- Concealed self closing mechanism.

### Model BF - 1 Bi-Fold Door

- Manual close door opens full 180°.

## Options:

- Putty for laboratory setting - **Code PP**
- Gray for hazardous materials - **Code GP**
- Additional galvanized shelves - **see charts**

## Model BM - Manual Close

Capacity Gallons	Catalog No.	Size (in) W x D x H	# Shelves	Wgt. (lbs)	Add'l Shelves	
					No.	Wgt.
22	BM22	34 x 18 x 35	1	182	GS134	8
28	BM28	34 x 18 x 44	2	234	GS134	8
30	BM30	43 x 18 x 44	1	254	GS143	12
44	BM44	34 x 18 x 65	3	334	GS134	8
45	BM45	43 x 18 x 65	2	360	GS143	12
60	BM60	34 x 34 x 65	2	440	GS334	16
90	BM90	43 x 34 x 65	2	504	GS343	22
120	BM120	59 x 34 x 65	2	620	GS359	30

## Model BS - Self Close

Capacity Gallons	Catalog No.	Size (in) W x D x H	# Shelves	Wgt. (lbs)	Add'l Shelves	
					No.	Wgt.
22	BS22	34 x 18 x 35	1	196	GS134	8
28	BS28	34 x 18 x 44	2	248	GS134	8
30	BS30	43 x 18 x 44	1	268	GS143	12
44	BS44	34 x 18 x 65	3	348	GS134	8
45	BS45	43 x 18 x 65	2	374	GS143	12
60	BS60	34 x 34 x 65	2	454	GS334	16
90	BS90	43 x 34 x 65	2	518	GS343	22

## Model BF - Bi-Fold

Capacity Gallons	Catalog No.	Size (in) W x D x H	# Shelves	Wgt. (lbs)	Add'l Shelves	
					No.	Wgt.
30	BF30	43 x 18 x 44	1	260	GS143	12
45	BF45	43 x 18 x 65	2	366	GS143	12
60	BF60	34 x 34 x 65	2	446	GS334	16
90	BF90	43 x 34 x 65	2	510	GS343	22

Chemical storage maximum - Class I & II - 60 gallons, Class III - 120 gallons

**All Products Ship "Qwik Ship"**



# Forkliftable Safety Flammable Cabinets - 3 Door Types

**Models FM, FS, FF - manual, bi fold & self close doors with double wall cabinets to contain flammable liquids in protected storage with floor clearance**



Model FM45 Shown



Model FS45 Shown



Model FF45 Shown

## Product Features:

- All welded double wall 18 gauge construction with 1-1/2" insulating air space.
- 4" high feet allow for movement with a fork lift truck.
- 2" leakproof sill to contain leaks.
- Lockable flush mounted handle with 2 keys.
- Doors have 3 point locking system and radius edges.
- **Doors are double walled, 14 gauge outside & 18 gauge inside.**
- 4" heavy duty weld hinges with brass pins.
- Twin 2" flame arrester vents.
- **Powder coated yellow finish** (see options).
- Safety signage in large red letters.
- Galvanized steel shelves adjust on 2-1/2" centers.
- Meets OSHA, and NFPA code 30 & UFC 79 standards.



## Three Door Types:

### Model FM - 2 Doors

- Manual close door opens full 180°.

### Model FS - 2 Doors

- **Self close doors** shut, index, latch automatically as fusible links melt under fire conditions at 165°.
- Concealed self closing mechanism.

### Model FF - 1 Bi-Fold Door

- Manual close door opens full 180°.

## Options:

- Putty for laboratory setting - **Code PP**
- Gray for hazardous materials - **Code GP**
- Additional galvanized shelves - **see charts**

## Model FM - Manual Close

Capacity Gallons	Catalog No.	Size (in) W x D x H	# Shelves	Wgt. (lbs)	Add'l Shelves	
					No.	Wgt.
28	FM28	34 x 18 x 49	2	230	GS134	8
30	FM30	43 x 18 x 49	1	250	GS143	12
44	FM44	34 x 18 x 70	3	340	GS134	8
45	FM45	43 x 18 x 70	2	368	GS143	12
60	FM60	34 x 34 x 70	2	444	GS334	16
90	FM90	43 x 34 x 70	2	508	GS343	22
120	FM120	59 x 34 x 70	2	626	GS359	30

## Model FS - Self Close

Capacity Gallons	Catalog No.	Size (in) W x D x H	# Shelves	Wgt. (lbs)	Add'l Shelves	
					No.	Wgt.
28	FS28	34 x 18 x 49	2	250	GS134	8
30	FS30	43 x 18 x 49	1	270	GS143	12
44	FS44	34 x 18 x 70	3	354	GS134	8
45	FS45	43 x 18 x 70	2	388	GS143	12
60	FS60	34 x 34 x 70	2	460	GS334	16
90	FS90	43 x 34 x 70	2	524	GS343	22

## Model FF - Bi-Fold

Capacity Gallons	Catalog No.	Size (in) W x D x H	# Shelves	Wgt. (lbs)	Add'l Shelves	
					No.	Wgt.
30	FF30	43 x 18 x 49	1	260	GS143	12
45	FF45	43 x 18 x 70	2	378	GS143	12
60	FF60	34 x 34 x 70	2	450	GS334	16
90	FF90	43 x 34 x 70	2	516	GS343	22

Chemical storage maximum - Class I & II - 60 gallons, Class III - 120 gallons

# Safety Flammable Cabinets - 1 Door Manual

**Model BA - 1 door manual, double wall cabinet to contain flammable liquids in protected storage in single & double depth**



## Options:

- Putty for laboratory setting - **Code PP**
- Gray for hazardous materials - **Code GP**
- Additional galvanized shelves - **see charts**

\*Not FM Approved

Model BA Shown

## Product Features:

- All welded double wall 18 gauge construction with 1-1/2" insulating air space.
- 2" leakproof sill to contain leaks.
- Lockable flush mounted handle with 2 keys.
- Door has 3 point locking system and radius edges.
- **Door is double walled, 14 gauge outside & 18 gauge inside.**
- 4" heavy duty weld hinges with brass pins.
- Galvanized steel shelves, adjust on 2-1/2" centers.
- Twin 2" flame arrester vents.
- Adjustable leveling feet.
- **Powder coated yellow finish** (see options).
- Safety signage in large red letters.
- Grounding connector.
- Meets OSHA, and NFPA code 30 standards.
- **Manual close door.**
- Slim line width - 23"      • Single Depth - 18"      • Double Depth - 34"



## Model BA - Manual Close

Capacity Gallons	Catalog No.	Size (in) W x D x H	# Shelves	Wgt. (lbs)	Add'l Shelves	
					No.	Wgt.
6	BA06*	23 x 18 x 22	0	92	GS123	6
12	BA12	23 x 18 x 35	1	130	GS123	6
18	BA18	23 x 18 x 44	2	166	GS123	6
24	BA24	23 x 18 x 65	3	244	GS123	6
30	BA30	23 x 34 x 35	1	196	GS323	12
40	BA40	23 x 34 x 44	2	244	GS323	12
60	BA60	23 x 34 x 65	3	410	GS323	12

Chemical storage maximum - Class I & II - 60 gallons, Class III - 120 gallons

# Safety Flammable Cabinets - 1 Door Self Close

**Model BJ - 1 door self close, double wall cabinet to contain flammable liquids in protected storage in single & double depth**



Concealed Self-Close Mechanism

## Options:

- Putty for laboratory setting - **Code PP**
- Gray for hazardous materials - **Code GP**
- Additional galvanized shelves - **see charts**

\*Not FM Approved

Model BJ Shown

## Product Features:

- All welded double wall 18 gauge construction with 1-1/2" insulating air space.
- 2" leakproof sill to contain leaks.
- Lockable flush mounted handle with 2 keys.
- Door has 3 point locking system and radius edges.
- **Door is double walled, 14 gauge outside & 18 gauge inside.**
- 4" heavy duty weld hinges with brass pins.
- Galvanized steel shelves, adjust on 2-1/2" centers.
- Twin 2" flame arrester vents.
- Adjustable leveling feet.
- **Powder coated yellow finish** (see options).
- Safety signage in large red letters.
- Grounding connector.
- Meets OSHA, and NFPA code 30 & UFC 79 standards.
- **Self close door shuts and latches automatically as fusible link melts under fire conditions at 165°**
- Concealed self closing mechanism.
- Slim line width - 23"      • Single Depth - 18"      • Double Depth - 34"



## Model BJ - Self Close

Capacity Gallons	Catalog No.	Size (in) W x D x H	# Shelves	Wgt. (lbs)	Add'l Shelves	
					No.	Wgt.
6	BJ06*	23 x 18 x 22	0	98	GS123	6
12	BJ12	23 x 18 x 35	1	142	GS123	6
18	BJ18	23 x 18 x 44	2	178	GS123	6
24	BJ24	23 x 18 x 65	3	250	GS123	6
30	BJ30	23 x 34 x 35	1	202	GS323	12
40	BJ40	23 x 34 x 44	2	250	GS323	12
60	BJ60	23 x 34 x 65	3	416	GS323	12

Chemical storage maximum - Class I & II - 60 gallons, Class III - 120 gallons

**All Products Ship "Qwik Ship"**



## Safety Cabinets – Under Counter or Fume Hood – 35" High

### Models BT, BK – Manual & Self Close Door(s) to store solvents or liquids under counter or laboratory setting



Model BT22 Shown

#### Options:

- Putty for laboratory setting - Code PP
- Gray for hazardous materials - Code GP
- Additional galvanized shelves - see charts



Concealed Self-Close Mechanism  
Model BK Only

#### Product Features:

- All welded double wall 18 gauge construction with 1-1/2" insulating air space.
- Furniture type Kickplate (3"d x 4"h).
- 2" leakproof sill to contain leaks.
- Lockable flush mounted handle with 2 keys.
- Door(s) have 3 point locking system and radius edges.
- Door(s) are double walled, 14 gauge outside & 18 gauge inside.
- 4" heavy duty weld hinges with brass pins.
- Twin 2" flame arrester vents mounted on back wall.
- Galvanized steel shelves, adjust on 2-1/2" centers.
- Adjustable leveling feet.
- Powder coated yellow finish (see options).
- Safety signage in large red letters.
- Grounding connector.
- Meets OSHA, and NFPA code 30
- Door(s) open full 180°.
- Self close door(s) shut, index and latch automatically as fusible link(s) melt under fire conditions at 165°. (Model BK only)
- Concealed self closing mechanism. (Model BK Only)



#### Models BT (Manual) & BK (Self-Close) - 35" High

Capacity Gallons	Cat. No. Manual	Wgt. (lbs)	Size (in) W x D x H	Cat. No. Self-Close	Wgt (lbs)	# Shelves	# Doors	Add'l Shelves	
								No.	Wgt.
12	BT12	150	24 x 22 x 35	BK12	156	1	1	GS222	8
22	BT22	198	36 x 22 x 35	BK22	212	1	2	GS322	12
30	BT30	240	48 x 22 x 35	BK30	254	1	2	GS422	16

Chemical storage maximum - Class I & II - 60 gallons, Class III - 120 gallons

## Safety Cabinet – Counter Top or Stackable on other Cabinets – 22" High

### Models BY, BU – Manual & Self Close Door(s) to store solvents or liquids on counter or on top of other Cabinets



Model BY15 shown on top

#### Options:

- Putty for laboratory setting - Code PP
- Gray for hazardous materials - Code GP
- Additional galvanized shelves - see charts



Concealed Self-Close Mechanism  
Model BU only

#### Product Features:

- All welded double wall 18 gauge construction with 1-1/2" insulating air space.
- 2" leakproof sill to contain leaks.
- Lockable flush mounted handle with 2 keys.
- Door(s) have 3 point locking system and radius edges.
- Door(s) are double walled, 14 gauge outside & 18 gauge inside.
- 4" heavy duty weld hinges with brass pins.
- Twin 2" flame arrester vents.
- Galvanized steel shelves, adjust on 2-1/2" centers.
- Adjustable leveling feet with rubber caps.
- Powder coated yellow finish (see options).
- Safety signage in large red letters.
- Grounding connector.
- Meets OSHA, and NFPA code 30
- Door(s) open full 180°.
- Self close door(s) shut, index and latch automatically as fusible link(s) melt under fire conditions at 165°. (Model BU only)
- Concealed self closing mechanism. (Model BU Only)

#### Models BY (Manual) & BU (Self-Close) - 22" High

Capacity Gallons	Cat. No. Manual	Wgt. (lbs)	Size (in) W x D x H	Cat. No. Self-Close	Wgt (lbs)	# Shelves	# Doors	Add'l Shelves	
								No.	Wgt.
6	BY06	110	23 x 18 x 22	BU06	116	0	1	GS123	6
11	BY11	140	34 x 18 x 22	BU11	154	0	2	GS134	8
15	BY15	160	43 x 18 x 22	BU15	174	0	2	GS143	12

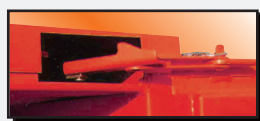
Chemical storage maximum - Class I & II - 60 gallons, Class III - 120 gallons

# Safety Flammable Cabinets (paint & ink cans) - 3 Door Types

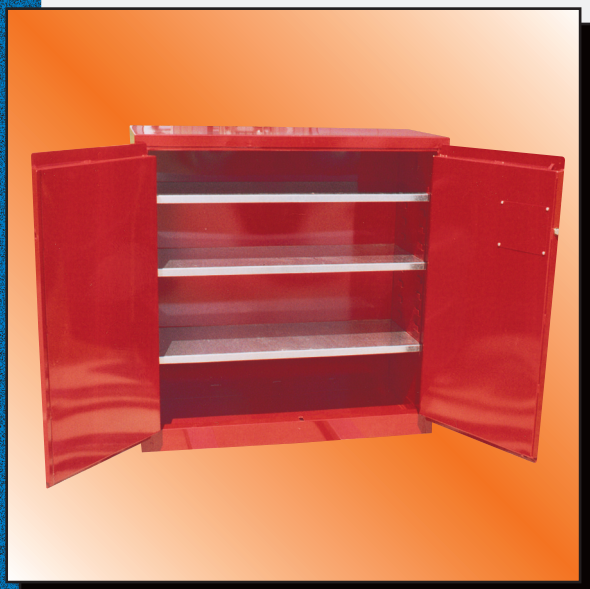
**Models BP, BN, BH - manual, self close & bi fold doors with double wall cabinets to contain paint & ink cans in protected storage**



Model BP48 Shown



Concealed  
Self-Close  
Mechanism



Model BP48 Shown

## Product Features:

- All welded double wall 18 gauge construction with 1-1/2" insulating air space.
- 2" leakproof sill to contain leaks.
- Lockable flush mounted handle with 2 keys.
- Doors have 3 point locking system and radius edges.
- **Doors are double walled, 14 gauge outside & 18 gauge inside.**
- 4" heavy duty weld hinges with brass pins.
- Twin 2" flame arrester vents.
- Adjustable leveling feet.
- **Powder coated red finish.**
- Safety signage in large red letters.
- Galvanized steel shelves adjust on 2-1/2" centers.
- Grounding connector.
- Meets OSHA, and NFPA code 30 & UFC 79 standards.



## Three Door Types:

### Model BP - 1 or 2 Doors

- Manual close door opens full 180°.

### Model BN - 1 or 2 Doors

- Self close door(s) shut, index and latch automatically as fusible link(s) melt under fire conditions at 165°.
- Concealed self closing mechanism.

### Model BH - 1 Bi-Fold Door

- Manual close door opens full 180°.

## Options:

- Additional galvanized shelves - **see charts**
- 4" feet (except on 23" wide) - **Code TF**

### Model BP - Manual Close

Capacity Gallons	Catalog No.	Size (in) W x D x H	# Shelves	# Doors	Wgt. (lbs)	Add'l Shelves	
						No.	Wgt.
12	BP12*	23 x 18 x 22.	1	1	114	GS123	6
18	BP18	23 x 18 x 35	2	1	136	GS123	6
24	BP24	23 x 18 x 44	3	1	170	GS123	6
30	BP30	34 x 18 x 35	2	2	190	GS134	8
36	BP36	23 x 18 x 65	5	1	272	GS123	6
48	BP48	43 x 18 x 44	3	2	276	GS143	12
72	BP72	43 x 18 x 65	5	2	392	GS143	12
96	BP96	34 x 34 x 65	5	2	488	GS334	16
120	BP120	43 x 34 x 65	5	2	566	GS343	22

### Model BN - Self Close

\*Not FM Approved

Capacity Gallons	Catalog No.	Size (in) W x D x H	# Shelves	# Doors	Wgt. (lbs)	Add'l Shelves	
						No.	Wgt.
12	BN12*	23 x 18 x 22	1	1	122	GS123	6
18	BN18	23 x 18 x 35	2	1	138	GS123	6
24	BN24	23 x 18 x 44	3	1	174	GS123	6
30	BN30	34 x 18 x 35	2	2	204	GS134	8
36	BN36	23 x 18 x 65	5	1	286	GS123	6
48	BN48	43 x 18 x 44	3	2	290	GS143	12
72	BN72	43 x 18 x 65	5	2	406	GS143	12
96	BN96	34 x 34 x 65	5	2	502	GS334	16
120	BN120	43 x 34 x 65	5	2	584	GS343	22

### Model BH - Bi-Fold

\*Not FM Approved

Capacity Gallons	Catalog No.	Size (in) W x D x H	# Shelves	# Doors	Wgt. (lbs)	Add'l Shelves	
						No.	Wgt.
48	BH48	43 x 18 x 44	3	1	282	GS143	12
72	BH72	43 x 18 x 65	5	1	398	GS143	12
96	BH96	34 x 34 x 65	5	1	494	GS334	16
120	BH120	43 x 34 x 65	5	1	572	GS343	22

Chemical storage maximum - Class I & II - 60 gallons, Class III - 120 gallons

**All Products Ship "Qwik Ship"**



# Safety Flammable Cabinets (corrosive & pesticides)

**Models CL, FL, CK, FK, CJ, FJ - manual, bi fold & self close doors with double wall cabinets to contain chemicals in protected storage**



Note: Steel Corrosive Safety Cabinets - are not recommended for the storage of aggressive acids like nitric, hydrochloric or sulfuric.

Corrosive Model CL30 Shown



Concealed Self-Close Mechanism



Poly-Liner Tray



Pesticides Model FL30 Shown

## Product Features:

- All welded double wall 18 gauge construction with 1-1/2" insulating air space.
- 2" leakproof sill to contain leaks.
- Lockable flush mounted handle with 2 keys.
- Doors have 3 point locking system and radius edges.
- Doors are double walled, 14 gauge outside & 18 gauge inside.
- 4" heavy duty weld hinges with brass pins.
- Twin 2" flame arrester vents.
- Adjustable leveling feet.
- Powder coated blue finish.
- Safety signage in large red letters.
- Galvanized steel shelves adjust on 2-1/2" centers.
- Polyethylene tray liner for shelves & sill
- Grounding connector.
- Meets OSHA, and NFPA code 30 & UFC 79 standards.



## Three Door Types:

### Models CL & FL - 1 or 2 Doors

- Manual close door opens full 180°.

### Models CK & FK - 1 or 2 Doors

- Self close door(s) shut, index and latch automatically as fusible link(s) melt under fire conditions at 165°.
- Concealed self closing mechanism.

### Models CJ & FJ - 1 Bi-Fold Door

- Manual close door opens full 180°.

## Options:

- Additional galvanized shelves with liners - see charts
- Powder coat galvanized shelf - Code PC
- 4" high feet (except on 23" wide units) - Code TF

## Models CL (Corrosive) & FL (Pesticide) - Manual Close

Capacity Gallons	Catalog No.		Size (in) W x D x H	# Shelves	# Tray Liners	# Doors	Wgt. (lbs)	Add'l Shelf w/liner	
	Corrosive	Pesticide						No.	Wgt.
6	CL06*	FL06*	23 x 18 x 22	0	1	1	92	GL123	6
12	CL12	FL12	23 x 18 x 35	1	2	1	138	GL123	6
18	CL18	FL18	23 x 18 x 44	2	3	1	176	GL123	6
24	CL24	FL24	23 x 18 x 65	3	4	1	248	GL123	6
30	CL30	FL30	43 x 18 x 44	1	2	2	260	GL143	12
45	CL45	FL45	43 x 18 x 65	2	3	2	368	GL143	12
60	CL60	FL60	34 x 34 x 65	2	3	2	456	GL334	16

## Models CK (Corrosive) & FK (Pesticide) - Self Close

Capacity Gallons	Catalog No.		Size (in) W x D x H	# Shelves	# Tray Liners	# Doors	Wgt. (lbs)	Add'l Shelf w/liner	
	Corrosive	Pesticide						No.	Wgt.
6	CK06*	FK06*	23 x 18 x 22	0	1	1	98	GL123	6
12	CK12	FK12	23 x 18 x 35	1	2	1	144	GL123	6
18	CK18	FK18	23 x 18 x 44	2	3	1	182	GL123	6
24	CK24	FK24	23 x 18 x 65	3	4	1	254	GL123	6
30	CK30	FK30	43 x 18 x 44	1	2	2	274	GL143	12
45	CK45	FK45	43 x 18 x 65	2	3	2	382	GL143	12
60	CK60	FK60	34 x 34 x 65	2	3	2	470	GL334	16

## Models CJ (Corrosive) & FJ (Pesticide) - Bi Fold

Capacity Gallons	Catalog		Size (in) W x D x H	# Shelves	# Tray Liners	Wgt. (lbs)	Add'l Shelf w/liner	
	Manual	Self-Close					No.	Wgt.
30	CJ30	FJ30	43 x 18 x 44	1	2	266	GL143	12
45	CJ45	FJ45	43 x 18 x 65	2	3	374	GL143	12
60	CJ60	FJ60	34 x 34 x 65	2	3	462	GL334	16

Chemical storage maximum - Class I & II - 60 gallons, Class III - 120 gallons \*Not FM Approved

Made in USA

# Safety Flammable Cabinets - 55 Gallon Drum(s)

**Models BV, BW, BO - 2 door manual and self close, double wall cabinet to contain flammable 30 to 55 gallon drum(s) in protected storage**



Model BV Shown  
with optional drum roller



Concealed Self-Close Mechanism



Model BO Shown

## Options:

- Putty for laboratory setting - **Code PP**
- Gray for hazardous materials - **Code GP**
- Drum roller for BV1, B0120 & BW1 - **Code DA**
- Drum roller for BV2 - **Code DB**
- Drum ramp (24" x 28") - **Code DR**
- 4" feet - **Code TF**

## Product Features:

- All welded double wall 18 gauge construction with 1-1/2" insulating air space.
- 2" leakproof sill to contain leaks.
- Lockable flush mounted handle with 2 keys.
- Doors have 3 point locking system and radius edges.
- **Doors are double walled, 14 gauge outside & 18 gauge inside.**
- 4" heavy duty weld hinges with brass pins.
- Twin 2" flame arrester vents.
- Galvanized steel 1/2 depth shelf adjusts on 2-1/2" centers.
- Adjustable leveling feet.
- **Powder coated yellow finish** (see options).
- Safety signage in large red letters.
- Grounding connector.
- Meets OSHA, and NFPA code 30 & UFC 79 standards.



## Two Door Types:

### Model BV, BO - 2 Doors

- Manual close doors open full 180°.

### Model BW - 2 Doors

- **Self close doors** (shut, index, and latch automatically as fusible link(s) melt under fire conditions at 165°).
- Concealed self closing mechanism.

### Model BV - Manual Close

No. Drums	Catalog No.	Size (in) W x D x H	Wgt. (lbs)
1	BV1	34 x 34 x 65	384
2	BV2	59 x 34 x 65	550

### Model BW - Self Close

No. Drums	Catalog No.	Size (in) W x D x H	Wgt. (lbs)
1	BW1	34 x 34 x 65	396

### Model BO - Manual Close - Combo Unit\*

No. Drums	No. 5 Gallon Cans	Catalog No.	Size (in) W x D x H	Wgt. (lbs)
1	12	B0120	59 x 34 x 65	610

#### \*Combo unit - 2 compartments:

Right Side - 1 vertical 55 drum

Left Side - 3 shelves for 12- 5 Gallon Safety Cans

See options for drum roller or drum ramp

Chemical storage maximum - Class I & II - 60 gallons, Class III - 120 gallons

**All Products Ship "Qwik Ship"**



## Fire Resistant Double Walled (Manual Close Doors) Security Cabinets

### Models BR, BX - Closed storage cabinet to secure materials or valuables



Model BR

Model BX

#### Options:

- Putty Powder Coat Finish - Code PP

#### Model BX - Bi-Fold

Capacity (cu ft)	Catalog No.	Size (in) W x D x H	# Shelves	Wgt. (lbs)
19	BX19	43 x 18 x 44	3	278
29	BX29	43 x 18 x 65	4	396
43	BX43	34 x 34 x 65	4	480
55	BX55	43 x 34 x 65	4	550

#### Product Features:

- All welded double wall 18 gauge construction with 1-1/2" insulating air space.
- Lockable flush handle with 2 keys.
- Doors are double walled, 14 gauge outside & 18 gauge inside.
- Doors have 3 point locking system and radius edges.
- 4" heavy duty weld hinges with brass pins.
- Adjustable leveling feet.
- Powder coated gray finish (see options).
- Steel shelves adjust on 2-1/2" centers.
- Manual close doors (open to full 180°) (Model BR);  
Bi-fold door manual close. (Model BX)

#### Model BR - Manual Close

Capacity (cu ft)	Catalog No.	Size (in) W x D x H	# Shelves	# Doors	Wgt. (lbs)
<b>35" HIGH</b>					
8	BR8	23 x 18 x 35	2	1	150
12	BR12	34 x 18 x 35	2	2	190
16	BR16	23 x 34 x 35	2	1	210
<b>44" HIGH</b>					
10	BR10	23 x 18 x 44	3	1	180
14	BR14	34 x 18 x 44	3	2	230
19	BR19	43 x 18 x 44	3	2	280
20	BR20	23 x 34 x 44	3	1	290
<b>65" HIGH</b>					
15	BR15	23 x 18 x 65	4	1	258
23	BR23	34 x 18 x 65	4	2	348
29	BR29	43 x 18 x 65	4	2	424
30	BR30	23 x 34 x 65	4	1	384
43	BR43	34 x 34 x 65	4	2	474
55	BR55	43 x 34 x 65	4	2	544
75	BR75	59 x 34 x 65	4	2	666

## Medical Gas Cylinder Cabinets

### Model CB - Medical gas cylinder cabinet with non sparking aluminum divider



#### Product Features:

- All welded double wall 18 gauge construction with 1-1/2" insulating air space.
- Non sparking aluminum divider.
- Lockable flush mounted handle with 2 keys.
- Door has 3 point locking system and radius edges.
- Door is double walled, 14 gauge outside & 18 gauge inside.
- 4" heavy duty weld hinges with brass pins.
- Adjustable leveling feet.
- Safety signage "Medical Gas Cylinders".
- Grounding connector.
- Meets OSHA, and NFPA code 30, 99 and 101 standards.
- Manual close door.
- Powder coated green finish.

#### Model CB - 1 & 2 Doors

Size (in) W x D x H	Cylinder Type	Max. No. Cylinders	# of Doors	Catalog No.	Wgt. (lbs)
23 x 18 x 44	D, E	12	1	CB012	172
43 x 18 x 44	D, E	24	2	CB024	270
34 x 34 x 65	H	9	2	CB090	460

# Spill Containment Cabinet

## Models ML, MP, MY - Closed storage for spill containment



Model ML



Model MP



Model MY

### Product Features:

- All welded 14 gauge construction (walls and doors).
- Lockable doors, with lever handle, 3 point locking system. Doors open 180° (padlock not included).
- Full fixed top shelf - 18 gauge with 12" clearance.
- 4" high feet.
- Legs allow moving of unit with fork lift truck.
- **"Spill Containment Cabinet" signage in large red letters.**
- Powder coated yellow finish.
- Overall height - 78"

### Specific Model Features:

#### Model ML

- Four adjustable 20" x 20" half shelves, adjust on 2-1/2" centers
- Vertical divider separates interior into two halves.
- 1-1/4" garment bar - 16" (36" wide unit) & 28" (48" wide unit).

#### Model MP

- Two adjustable 20" x 20" half shelves, adjust on 2-1/2" centers
- 3 Lockable drawers (5"h x 16"w x 16"d) with 2 keys.
- Vertical divider separates interior into two halves.
- 1-1/4" garment bar - 16" (36" wide unit) & 28" (48" wide unit).

#### Model MY

- 1-1/4" garment bar - Full width of cabinet.
- Full fixed bottom shelf - 18 gauge with 12" clearance.

### Option:

- Additional half shelves with adjustable clips - **Code GC** (Models ML & MP)

### Model ML - Spill Containment

DxW (in)	Cat. No.	Wgt. (lbs)
24 x 36	ML236	352
48	ML248	410

### Model MP - Spill Containment with 3 Drawers



DxW (in)	Cat. No.	Wgt. (lbs)
24 x 36	MP236	412
48	MP248	470

### Model MY - Spill Containment with Full Garment Bar



DxW (in)	Cat. No.	Wgt. (lbs)
24 x 36	MY236	310
48	MY248	368



# Gas Cylinder Cabinets for Propane Tanks

## Models CW, CH, CA - Security cabinets for propane cylinders



Model CW Shown

### Product Features:

- Lockable mesh door(s) with slide bolt hasp (no lock).
- All welded - ready to use, meets OSHA 1910.
- 13 gauge flattened mesh sides.
- 14 gauge solid top (All Models), 14 gauge solid shelf (except Model CH).
- 1-1/2" x 3/16" thick corner angles.
- Foot pads with pre-drilled holes.
- Powder coated safety yellow.
- **Safety signage in large red letters.**

### Stores Cylinders For Floor Scrubbers & Other Tanks In An Upright Position.

#### Model CW - Vertical Propane Tanks

W x D x H (in)	Max. No. Cylinders*	Model	Wgt. (lbs)
33 x 21 x 39	2	CW130	130
33 x 33 x 39	4	CW330	160
33 x 38 x 70	12	CW336	280

\* Propane cylinders 12" dia. x 22-1/2" H store in vertical position.



Model CH Shown

### Stores Forklift Propane Cylinders On Their Sides.

#### Model CH - Horizontal - 20-43 lb Cylinders

W x D x H (in)	Max. No. Cylinders	Model	Wgt. (lbs)
33 x 38 x 39	4	CH040	170
33 x 38 x 70	8	CH080	280
49 x 38 x 70	12	CH120	384
65 x 38 x 70	16	CH160	516

• Smooth 1" tube support rails for cylinder protection.



Model CA Shown

### Stores Forklift Propane Cylinders In An Upright Position.

#### Model CA - Vertical - 20-43 lb Cylinders



W x D x H (in)	Max. No. Cylinders	Model	Wgt. (lbs)
33 x 21 x 39	2	CA020	130
33 x 38 x 39	4-6	CA040	180
33 x 38 x 70	8-12	CA080	290
49 x 38 x 70	12-18	CA120	414
65 x 38 x 70	16-24	CA160	556

# Gas Cylinder Cabinets

## Models CV, CX, CU - Security cabinets for gas cylinders



Model CV Shown

### Product Features:

- Lockable mesh door(s) with slide bolt hasp (no lock).
- All welded - ready to use, meets OSHA 1910.
- 13 gauge flattened mesh sides.
- 14 gauge solid top (All models) & 12 gauge middle shelf (Model CU only) .
- 1-1/2" x 3/16" thick corner angles.
- Foot pads with pre-drilled holes.
- Powder coated safety yellow.
- **Safety signage in large red letters.**

### Stores Welding Gas Cylinders In Vertical Position.

**Model CV** - Vertical Cylinders Up To 200 lbs  
5-10 & 10-20 Cylinder Units

W x D x H (in)	Max. No. Cylinders	Model	Wgt. (lbs)
33 x 38 x 70	5 - 10	CV051	214
60 x 38 x 70	10 - 20	CV102	402

- Safety retention chains.



Model CX Shown

### Combo Gas Cylinder Storage - Vertical & Horizontal Positions

**Model CX** - Horizontal - 20-43 lb - 8 Cylinders  
Vertical - 200 lb - 5-10 Cylinders

W x D x H (in)	Max. No. Cylinders	Model	Wgt. (lbs)
62 x 38 x 70	8 / 5-10	CX100	460

- Safety retention chain.



Model CU Shown

### Gas Cylinder Storage - Vertical Positions

**Model CU** - Vertical - 20-43 lb - 8-12 Cylinders  
Vertical - 200 lb - 5-10 Cylinders



W x D x H (in)	Max. No. Cylinders	Model	Wgt. (lbs)
62 x 38 x 70	8-12 / 5-10	CU100	504

- Safety retention chain.



# 2,000 Lbs per Shelf Mill Duty 12 Gauge Cabinets

**Models MJ, MO, MZ - Super rugged closed storage to secure materials or valuables**

2,000 LB CAP. PER SHELF



Model MJ Shown

## Product Features:

- All welded 12 gauge construction.
- Super structure extra bracing - exterior skeleton of 1/8" angle on front facing corners.
- Heavy duty lockable door handle (casting) - padlock not included.
- Extra heavy duty full length piano hinges welded to frame to retain doors.
- 4" high feet.
- Legs allow moving unit with fork lift truck.
- Overall height - 78"
- Powder coated black finish.

## Specific Features:

### Model MJ

- Four 12 gauge adjustable shelves (on 1-1/2" centers) with 2" lips (corners welded).

### Model MO

- Three 12 gauge adjustable shelves (on 1-1/2" centers) with 2" lips (corners welded).
- Adjustable drawer 36" unit - (5"h x 30"w x 20"d); 48" unit - (5"h x 42"w x 20"d).

### Model MZ

- Three 12 gauge adjustable shelves (on 1-1/2" centers) with 2" lips (corners welded).
- Three adjustable drawers 36" unit - (5"h x 30"w x 20"d); 48" unit - (5"h x 42"w x 20"d).

## Options:

- Floor bolt down kit - **Code BK**
- Powder coated gray finish - **Change BL to GP**
- Additional Shelf - **Code HT**

### Model MJ - Super Heavy Duty 12 Gauge

DxW (in)	Cat. No.	Wgt. (lbs)
24 x 36	MJ236-BL	560
48	MJ248-BL	680
60	MJ260-BL	800



Model MO Shown

### Model MO - Super Heavy Duty 12 Gauge With 1 Drawer



DxW (in)	Cat. No.	Wgt. (lbs)
24 x 36	MO236-BL	582
48	MO248-BL	708

### Model MZ - Super Heavy Duty 12 Gauge With 3 Drawers



DxW (in)	Cat. No.	Wgt. (lbs)
24 x 36	MZ236-BL	687
48	MZ248-BL	820



Model MZ Shown

Made in U.S.A.

## Stationary Mesh Security Cabinet (1, 2, 3 & 4 Shelves)

**Models MA, MB, MC, MD - Heavy duty lockable units to secure packages while maintaining visual contact**

**3,000 LB CAPACITY**



Model MB Shown

### Options:

- Solid panels available.
- Shelf lips up - **Code GA**
- Fork lift pockets - 3" x 6" (specify center line) - **Code FP**
- All sides flattened 13 gauge expanded mesh 5' high - **Code SF**
- Powder coated gray finish - **Change BL to GP**

### Product Features:

- Four sides flattened 13 gauge expanded mesh 4' high (also top cover).
- 2 flattened 13 gauge expanded mesh doors on one side with lockable hasp (padlock not included).
- All welded construction.
- Durable **12 gauge steel shelves**, 3/16" thick angle corners, and 12 gauge feet.
- Shelf lips down (flush) - see options.
- **Powder coated black finish** (see options).
- Clearance between shelves -  
Model MA - 46", Model MB - 22", Model MC - 15", Model MD - 10".
- Overall height - 54".

### SPECIFICATIONS

DxW (in)	1 Shelf		2 Shelves		3 Shelves		4 Shelves	
	Cat. No.	Wgt.	Cat. No.	Wgt.	Cat. No.	Wgt.	Cat. No.	Wgt.
24 x 48	MA248-BL	234	MB248-BL	276	MC248-BL	318	MD248-BL	360
60	MA260-BL	266	MB260-BL	318	MC260-BL	370	MD260-BL	422
30 x 48	MA348-BL	260	MB348-BL	312	MC348-BL	364	MD348-BL	416
60	MA360-BL	298	MB360-BL	362	MC360-BL	426	MD360-BL	490
36 X 48	MA448-BL	288	MB448-BL	348	MC448-BL	408	MD448-BL	468
60	MA460-BL	330	MB460-BL	404	MC460-BL	478	MD460-BL	552
72	MA472-BL	378	MB472-BL	452	MC472-BL	532	MD472-BL	598

Note: Doors add 4" depth

## Heavy Duty Mesh & Solid Security Cabinets with Adjustable Shelves

**Models MH, MF, MV - Closed storage cabinet to secure materials or valuables**

**3,000 LB CAPACITY**



Model MF

Model MH

Model MV

Note: Doors add 4" depth

### Product Features:

- All welded construction.
- **Adjustable middle shelf** is standard - adjustable on 3-1/2" centers - see options for additional shelves.
- Durable **12 gauge steel shelves**, and 3/16" thick angle corners.
- Shelf lips down (flush) - see options.
- **Powder coated black finish** (see options).
- Overall height - 54".

### Other Specifications:

#### Model MH:

- **14 gauge solid sides** 4' high with solid 14 gauge top.
- 2 solid doors on one side with lockable hasp (padlock not included).

#### Model MF:

- **Sides and back** flattened 13 gauge expanded mesh 4' high (also top cover).
- 2 flattened 13 gauge expanded mesh doors on one side with lockable hasp (padlock not included).

#### Model MV:

- **14 gauge solid sides** 4' high with solid 14 gauge top.
- 2 flattened 13 gauge expanded mesh doors on one side with lockable hasp (padlock not included).



### Model MH - Solid

### Model MF - Mesh

### Model MV - Mesh Doors

DxW (in)	1 Adj. Shelf		DxW (in)	1 Adj. Shelf		DxW (in)	1 Adj. Shelf	
	Cat. No.	Wgt.		Cat. No.	Wgt.		Cat. No.	Wgt.
24 x 48	MH248-BL	464	24 x 48	MF248-BL	386	24 x 48	MV248-BL	408
60	MH260-BL	538	60	MF260-BL	430	60	MV260-BL	468
30 x 48	MH348-BL	500	30 x 48	MF348-BL	412	30 x 48	MV348-BL	444
60	MH360-BL	588	60	MF360-BL	464	60	MV360-BL	518
36 x 48	MH448-BL	544	36 x 48	MF448-BL	440	36 x 48	MV448-BL	488
60	MH460-BL	620	60	MF460-BL	496	60	MV460-BL	550
72	MH472-BL	694	72	MF472-BL	540	72	MV472-BL	610

### Options:

- All sides 5' high - **Code SF**
- Shelf lips up - **Code GA**
- Fork lift pockets - 3" x 6" (specify center line) - **Code FP**
- Additional Shelves - **Code AT**
- Powder coated gray finish - **Change BL to GP**

**All Products Ship "Qwik Ship"**



# Security Cabinets (3 Shelves)

## Model MG, NH, ME - Heavy duty lockable cabinet to secure small valuables

2,000 LB CAPACITY



Model MG Shown

2,000 LB CAPACITY



Model NH Shown

2,000 LB CAPACITY



Model ME Shown

### Product Features:

- All welded construction.
- 3 durable **12 gauge steel shelves**, 3/16" thick angle corners, and 12 gauge feet.
- Shelf lips down (flush) - see options.
- **Powder coated black finish** (see options).
- Clearance between shelves –  
54" High Cabinets - 15"  
66" High Cabinets - 18"

### Specific Model Features:

#### Model MG

- 4 sides and top are **14 gauge solid panels**.
- 14 gauge solid door on one side with lockable hasp (padlock not included).

#### Model NH

- 4 sides and top are **14 gauge solid panels**.
- 1 flattened 13 gauge expanded mesh door on one side with lockable hasp (padlock not included).

#### Model ME

- Sides & top are flattened 13 gauge mesh with **14 gauge solid back panel**.
- 1 flattened 13 gauge expanded mesh door on one side with lockable hasp (padlock not included).

### Options:

- Powder coated gray finish - **Change BL to GP**
- Shelf lips up - **Code GA**

### Model MG - Solid

DxW (in)	Cat. No.	Wgt. (lbs)	Cat. No.	Wgt. (lbs)
	54" High		66" High	
24 x 24	MG224-BL	270	MG224SF-BL	310
24 x 30	MG230-BL	310	MG230SF-BL	350
24 x 36	MG236-BL	350	MG236SF-BL	390

Note: Doors add 4" to depth

### Model NH - Mesh Door

DxW (in)	Cat. No.	Wgt. (lbs)	Cat. No.	Wgt. (lbs)
	54" High		66" High	
24 x 24	NH224-BL	240	NH224SF-BL	280
24 x 30	NH230-BL	280	NH230SF-BL	320
24 x 36	NH236-BL	320	NH236SF-BL	360

Note: Doors add 4" to depth

### Model ME - Mesh

DxW (in)	Cat. No.	Wgt. (lbs)	Cat. No.	Wgt. (lbs)
	54" High		66" High	
24 x 24	ME224-BL	200	ME224SF-BL	230
24 x 30	ME230-BL	240	ME230SF-BL	270
24 x 36	ME236-BL	280	ME236SF-BL	310

Note: Doors add 4" to depth

# Heavy Duty Welded Cabinets - Solid Doors

**Models DL, GG, HG - Durable closed storage cabinets to secure materials and valuables**

**1,000 LB CAPACITY PER SHELF**



Model DL Shown

**1,000 LB CAPACITY PER SHELF**



Model GG Shown

**1,000 LB CAPACITY PER SHELF**



Model HG248 Shown

## Product Features:

- All welded 14 gauge construction.
- Lockable doors, with lever handle, 3 point locking system. Doors open 180° (padlock not included).
- Shelves adjust on 2-1/2" centers.
- 4" high feet.
- Legs allow moving of unit with fork lift truck.
- Powder coated black finish (see options).
- Overall height - 78"

## Other Specifications:

### Model DL

- Includes four 14 gauge reinforced shelves with 1-1/2" lips.

### Model GG

- Includes three 14 gauge reinforced shelves with 1-1/2" lips.
- Three drawers 36" Unit - (5"h x 30"w x 20"d); 48" Unit - (5"h x 42"w x 20"d).

### Model HG

- Includes two 14 gauge reinforced shelves with 1-1/2" lips.
- Lockable drawers (5"h x 16"w x 16"d) with 2 keys.

## Options:

- Powder coated gray finish - **Change BL to GP**
- Additional Shelf - **Code RT**

### Model DL - Solid Doors With 4 Shelves

DxW (in)	Cat. No.	Wgt. (lbs)
18 x 36	DL136-BL	320
48	DL148-BL	392
60	DL160-BL	464
24 x 36	DL236-BL	370
48	DL248-BL	450
60	DL260-BL	520
72	DL272-BL	606

### Model GG - Solid Doors With 3 Shelves & 3 Drawers



DxW (in)	Cat. No.	Wgt. (lbs)
24 x 36	GG236-BL	500
48	GG248-BL	598

### Model HG - Solid Doors With 2 Shelves and Drawers

DxW (in)	Cat. No.	# of Drawers	Wgt. (lbs)
24 x 36	HG236-BL	3	408
48	HG248-BL	6	560
60	HG260-BL	9	700



# Heavy Duty Welded Cabinets - Clearview Doors

**Models DJ, GE, HU - Durable closed storage, with clearview of contents, to secure materials and valuables**

**1,000 LB CAPACITY PER SHELF**



Model DJ Shown

**1,800 LB CAPACITY PER SHELF**



Model GE Shown

**1,000 LB CAPACITY PER SHELF**



Model HU248 Shown

## Product Features:

- All welded 14 gauge construction.
- Clearview door panels are 13 gauge expanded mesh.
- Lockable doors, with lever handle, 3 point locking system. Doors open 180° (padlock not included).
- Shelves adjust on 2-1/2" centers.
- 4" high feet.
- Legs allow moving unit with fork lift truck.
- Powder coated black finish (see options).
- Overall height - 78"

## Specific Model Features:

### Model DJ

- Includes four 14 gauge shelves with 1-1/2" lips.

### Model GE

- Includes three 14 gauge reinforced shelves with 1-1/2" lips.
- Three drawers 36" Unit - (5"h x 30"w x 20"d); 48" Unit - (5"h x 42"w x 20"d).

### Model HU

- Includes two 14 gauge reinforced shelves with 1-1/2" lips.
- Lockable drawers (5"h x 16"w x 16"d) with 2 keys.

## Options:

- Powder coated gray finish - **Change BL to GP**
- Additional Shelf - **Code RT**

## Model DJ - Clearview Doors

DxW (in)	Cat. No.	Wgt. (lbs)
18 x 36	DJ136-BL	306
48	DJ148-BL	368
60	DJ160-BL	430
24 x 36	DJ236-BL	354
48	DJ248-BL	426
60	DJ260-BL	496

## Model GE - Clearview Doors With 3 Shelves & 3 Drawers

DxW (in)	Cat. No.	Wgt. (lbs)
24 x 36	GE236-BL	438
48	GE248-BL	534

## Model HU - Clearview Storage Cabinet with Drawers

DxW (in)	Cat. No.	# of Drawers	Wgt. (lbs)
24 x 36	HU236-BL	3	416
48	HU248-BL	6	562
60	HU260-BL	9	700

## 1,800 Lb Capacity per Shelf Welded Cabinets - Solid Doors

**Model DS - Durable closed storage cabinets to secure materials and valuables**

1,800 LB CAPACITY PER SHELF



### Product Features:

- All welded 14 gauge construction.
- Lockable doors, with lever handle, 3 point locking system. Doors open 180° (padlock not included).
- Includes four 14 gauge reinforced shelves with 2" lips, corners welded, and return bends for extra strength.
- Shelves adjust on 2-1/2" centers.
- 4" high feet.
- Legs allow moving unit with fork lift truck.
- Powder coated black finish (see options).
- Overall height - 78"

### Model DS - Super Heavy Duty Shelves - Solid Doors

DxW (in)	Cat. No.	Wgt. (lbs)
18 x 36	DS136-BL	330
48	DS148-BL	404
60	DS160-BL	476
24 x 36	DS236-BL	380
48	DS248-BL	462
60	DS260-BL	544

### Options:

- Powder coated gray finish - Change BL to GP
- Additional Shelf - Code ET

## 1,800 Lb Capacity per Shelf Welded Cabinets - Clearview Doors

**Models DM - Durable closed storage, with clearview of contents, to secure materials and valuables**

1,800 LB CAPACITY PER SHELF



### Product Features:

- All welded 14 gauge construction.
- Clearview door panels are 13 gauge expanded mesh.
- Lockable doors, with lever handle, 3 point locking system. Doors open 180° (padlock not included).
- Includes four 14 gauge reinforced shelves with 2" lips, corners welded, and return bends for extra strength.
- Shelves adjust on 2-1/2" centers.
- 4" high feet.
- Legs allow moving unit with fork lift truck.
- Powder coated black finish (see options).
- Overall height - 78".

### Model DM - Super Heavy Duty Shelves - Clearview Doors

DxW (in)	Cat. No.	Wgt. (lbs)
18 x 36	DM136-BL	316
48	DM148-BL	380
60	DM160-BL	442
24 x 36	DM236-BL	364
48	DM248-BL	438
60	DM260-BL	510

### Options:

- Powder coated gray finish - Change BL to GP
- Additional Shelf - Code ET

Made in U.S.A.



# Garment Storage Cabinet

**Models MS, MK, MU - Closed storage to secure garments and other materials**



Model MS



Model MK



Model MU

## Product Features:

- All welded 14 gauge construction (walls and doors).
- Lockable doors, with lever handle, 3 point locking system. Doors open 180° (padlock not included).
- Full fixed top shelf - 18 gauge with 12" clearance.
- 4" high feet.
- Legs allow moving of unit with fork lift truck.
- Powder coated black finish.
- Overall height - 78"

## Specific Model Features:

### Model MS

- Vertical divider separates interior into two halves.
- 4 adjustable 20" x 20" half shelves, adjust on 2-1/2" centers.
- 1-1/4" garment bar - 16" (36" wide unit) & 28" (48" wide unit).

### Model MK

- Vertical divider separates interior into two halves.
- 3 Lockable drawers (5"h x 16"w x 16"d) with 2 keys.
- 2 adjustable 20" x 20" half shelves, adjust on 2-1/2" centers.
- 1-1/4" garment bar - 16" (36" wide unit) & 28" (48" wide unit).

### Model MU

- 1-1/4" garment bar - Full width of cabinet.
- Full fixed bottom shelf - 18 gauge with 12" clearance.

## Options:

- Powder coated gray finish - **Change BL to GP**
- Extra half shelves with adjustable clips - **Code GC** (Models MS & MK only)
- Broom holder attached outside on cabinet side wall  
(single handle holder will accommodate handles from 7/8" to 1-1/4") - **Code BH**

## Model MS - Garment Storage

DxW (in)	Cat. No.	Wgt. (lbs)
24 x 36	MS236-BL	352
48	MS248-BL	410

## Model MK - Garment Storage with Drawers

DxW (in)	Cat. No.	# of Drawers	Wgt. (lbs)
24 x 36	MK236-BL	3	412
48	MK248-BL	3	470

## Model MU - Garment Storage with Full Garment Bar



DxW (in)	Cat. No.	Wgt. (lbs)
24 x 36	MU236-BL	310
48	MU248-BL	368

# Security 1 Door Cabinets

**Models WP, JR, JS - Closed storage cabinet to secure materials or valuables**

**2,000 LB CAPACITY**



Model WP Shown

## Product Features:

- All welded construction.
- **Lockable door** with 2 keys (Models WP & JR).
- **Lockable drawers** (keyed alike) with 2 keys - 5"h x 16"w x 16"d - (Models JR & JS).
- Durable **14 gauge steel shelves & sides** and 12 gauge feet.
- Top shelf front lip down, 3 other lips up for retention.
- Bottom shelf lips down (flush).
- **Powder coated gray finish** (see options).
- Clearance between shelves - 24" (Model WP); 19" (Model JR).
- Overall height - 33".

## Options:

- Add middle shelf lips down (flush) - **Code SM** (Except Model JS)
- Vinyl matting on work surface - **Code VM**

**2,000 LB CAPACITY**



Model JR Shown

## Model WP - 1 Door

DxW (in)	Cat. No.	Wgt. (lbs)
24 x 18	WP218	126

## Model JR - 1 Door With 1 Drawer

DxW (in)	Cat. No.	Wgt. (lbs)
24 x 18	JR218	152

**NEW**

**2,000 LB CAPACITY**



Model JS Shown

## Model JS - With 4 Drawers

DxW (in)	Cat. No.	Wgt. (lbs)
24 x 18	JS218	232

**NEW**



## Security 1 & 2 Door Cabinets

**Models WJ, JK, JL - Closed storage cabinet to secure materials or valuables**

**2,000 LB CAPACITY**



Model WJ Shown

**2,000 LB CAPACITY**



Model JK Shown

**2,000 LB CAPACITY**



Model JL Shown

### Product Features:

- All welded construction.
- **Lockable door(s)** (keyed alike) with 2 keys (Models WJ & JK).
- **Lockable drawers** (keyed alike) with 2 keys - 5"h x 16"w x 16"d - (Models JK & JL).
- Durable **14 gauge steel shelves**, 14 gauge sides and 12 gauge feet.
- Top shelf front lip down, 3 other lips up for retention.
- Bottom shelf lips down (flush).
- **Powder coated gray finish** (see options).
- Clearance between shelves - 24" (Models WJ & JK).
- Overall height - 33".

### Options:

- Add middle shelf lips down (flush) - **Code SM** (Model WJ only)
- Vinyl matting on work surface - **Code VM**
- Middle shelf (behind door) shelf lips down (flush) - **Code HM** (Model JK only)
- Wood top - **Code WT**
- Drawers keyed differently - **Code KS** (Models JK & JL)

### Model WJ - 2 Doors

DxW (in)	Cat. No.	Wgt. (lbs)
18 x 36	WJ136	142
24 x 36	WJ236	162

### Model JK - With 4 Drawers & 1 Door



DxW (in)	Cat. No.	Wgt. (lbs)
18 x 36	JK136	318
24 x 36	JK236	362

### Model JL - With 8 Drawers



DxW (in)	Cat. No.	Wgt. (lbs)
18 x 36	JL136	412
24 x 36	JL236	462

**Made in U.S.A.**

# Plastic Bin & Shelf - Welded Cabinets - Solid Doors

## Models HK, HN, HH, HY- Durable closed storage with solid doors



Model HK236 Shown



Model HN248 Shown



Model HH236 Shown



Model HY236 Shown

### Product Features:

- All welded 14 gauge construction.
- Full louvered panel - back wall (Model HK only).
- Yellow plastic bin sizes:  
Big Bins (16-1/2" w x 14-3/4" d x 7" h)  
Large Bins (8-1/4" w x 11" d x 7" h)
- Lockable doors, with lever handle, 3 point locking system. Doors open 180° (padlock not included).
- 4" high feet.
- Legs allow moving unit with fork lift truck.
- Overall height - 78"
- Powder coated black finish (see options).

### Model HN:

- Lockable drawers (5" h x 16" w x 16" d) with 2 keys

### Models HH & HY:

- Includes two 14 gauge reinforced shelves with 1-1/2" lips (1,000 lb capacity per shelf).
- Full shelf rails allow shelves to be adjusted on 2-1/2" centers.

### Options:

- Additional Shelf - **Code RT** (Models HH & HY only)
- Additional Big Bins - **Code RG**
- Additional Large Bins - **Code RB**
- Powder coated gray finish - **Change BL to GP**

### Model HK - Plastic Bins - Solid Doors

DxW (in)	Cat. No.	No. of Bins		Wgt. (lbs)
		Big	Large	
24 x 36	HK236-BL	18	0	352
48	HK248-BL	18	9	428
60	HK260-BL	27	0	504
72	HK272-BL	36	0	568

### Model HN - Plastic Bins Storage Cabinet with Drawers

DxW (in)	Cat. No.	Number of Drawers	Number of Large Bins	Wgt. (lbs)
24 x 36	HN236-BL	3	16	416
48	HN248-BL	6	20	566
60	HN260-BL	9	24	710

### Model HH - Plastic Bins & Shelves - Solid Doors

DxW (in)	Cat. No.	No. of Bins		Wgt. (lbs)
		Big	Large	
24 x 36	HH236-BL	8	0	390
48	HH248-BL	8	4	476
60	HH260-BL	12	0	562
72	HH272-BL	16	0	636

### Model HY - Plastic Bins & Shelves - Solid Doors

DxW (in)	Cat. No.	No. of Bins Large	Wgt. (lbs)
24 x 36	HY236-BL	16	398
48	HY248-BL	20	474
60	HY260-BL	24	546
72	HY272-BL	28	646



# Plastic Bin & Shelf - Welded Cabinets - Clearview Doors

**Models DK, GF, DH, DY- Durable closed storage with clearview doors**



Model DK236 Shown



Model GF248 Shown



Model DH236 Shown



Model DY236 Shown

## Product Features:

- All welded 14 gauge construction.
- Clearview door panels are 13 gauge expanded mesh.
- Full louvered panel - back wall (Model DK only).
- Yellow plastic bin sizes:  
Big Bins (16-1/2" w x 14-3/4" d x 7" h)  
Large Bins (8-1/4" w x 11" d x 7" h)
- Lockable doors, with lever handle, 3 point locking system. Doors open 180° (padlock not included).
- 4" high feet.
- Legs allow moving unit with fork lift truck.
- Overall height - 78"
- Powder coated black finish (see options).

## Model GF:

- Lockable drawers (5" h x 16" w x 16" d) with 2 keys

## Models DH & DY:

- Includes two 14 gauge reinforced shelves with 1-1/2" lips (1,000 lb capacity per shelf)
- Full shelf rails allow shelves to be adjusted on 2-1/2" centers.

## Options:

- Additional Shelf - Code RT (Models DH & DY only)
- Additional Big Bins - Code RG
- Additional Large Bins - Code RB
- Powder coated gray finish - Change BL to GP

## Model DK - Plastic Bins - Clearview Doors

DxW (in)	Cat. No.	No. of Bins		Wgt. (lbs)
		Big	Large	
24 x 36	DK236-BL	18	0	336
48	DK248-BL	18	9	404
60	DK260-BL	27	0	512

## Model GF - Plastic Bins Storage Cabinet with Drawers

DxW (in)	Cat. No.	Number of Drawers	Number of Large Bins	Wgt. (lbs)
24 x 36	GF236-BL	3	16	400
48	GF248-BL	6	20	542
60	GF260-BL	9	24	676

## Model DH - Plastic Bins & Shelves - Clearview Doors

DxW (in)	Cat. No.	No. of Bins		Wgt. (lbs)
		Big	Large	
24 x 36	DH236-BL	8	0	380
48	DH248-BL	8	4	456
60	DH260-BL	12	0	534

## Model DY - Plastic Bins & Shelves - Clearview Doors

DxW (in)	Cat. No.	No. of Bins Large	Wgt. (lbs)
24 x 36	DY236-BL	16	382
48	DY248-BL	20	470
60	DY260-BL	24	540

# Welded Cabinets - Solid Doors with Pegboard

**Models GV, GW, GY - Durable closed storage - doors with pegboard**



## Product Features:

- All welded 14 gauge construction.
- Lockable doors, with lever handle, 3 point locking system. Doors open 180° (padlock not included).
- Pegboard on doors will accept all 1/8" & 1/4" pegboard hooks.
- 4" high feet.
- Legs allow moving unit with fork lift truck.
- Overall height - 78"
- Powder coated black finish (see options).

## Model GV:

- Shelves adjust on 2-1/2" centers.
- Includes two 14 gauge reinforced shelves with 1-1/2" lips.
- Lockable drawers (5"h x 16"w x 16"d) with 2 keys.

## Model GW:

- Lockable drawers (5"h x 16"w x 16"d) with 2 keys
- Yellow plastic Large Bins (8-1/4"w x 11"d x 7"h)

## Model GY:

- Yellow plastic bin sizes: Large Bins (8-1/4"w x 11"d x 7"h)
- Includes two 14 gauge reinforced shelves with 1-1/2" lips (1,000 lb capacity per shelf).
- Full shelf rails allow shelves to be adjusted on 2-1/2" centers.

## Options:

- Additional Shelf - **Code ST** (Models GV & GY only)
- Additional Big Bins - **Code RG** (Models GW & GY only)
- Additional Large Bins - **Code RB** (Models GW & GY only)
- Powder coated gray finish - **Change BL to GP**

## Model GV - Solid Doors w/ Pegboard, Drawers & Shelves

DxW (in)	Cat. No.	# of Drawers	Wgt. (lbs)
24 x 36	GV236-BL	3	464
48	GV248-BL	6	632
60	GV260-BL	9	794

## Model GW - Solid Doors w/ Pegboard - Plastic Bins - Drawers

DxW (in)	Cat. No.	Number of Drawers	Number of Large Bins	Wgt. (lbs)
24 x 36	GW236-BL	3	16	428
48	GW248-BL	6	20	584
60	GW260-BL	9	24	738

## Model GY - Solid Doors w/ Pegboard - Plastic Bins & Shelves

DxW (in)	Cat. No.	No. of Bins Large	Wgt. (lbs)
24 x 36	GY236-BL	16	418
48	GY248-BL	20	518
60	GY260-BL	24	620



Model GV236 Shown



Model GW236 Shown



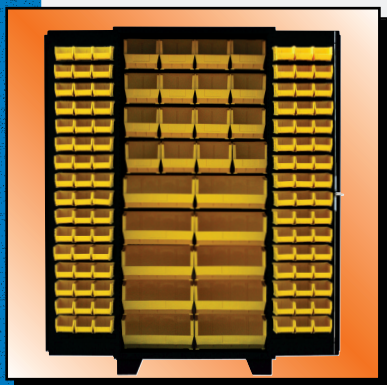
Model GY236 Shown

Made in U.S.A.



# Plastic Bin Welded Cabinets – Solid Doors

**Models DF, DZ, DP, DE – Durable closed storage cabinets for small part organization**



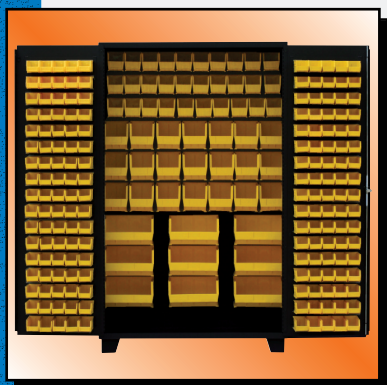
Model DF236 Shown



Model DZ236 Shown



Model DP236 Shown



Model DE260 Shown

## Product Features:

- All welded 14 gauge construction walls.
- Full louvered panels – back wall & doors
- Yellow plastic bin sizes:
  - Backwall: Big Bins (16-1/2"w x 14-3/4"d x 7"h)
  - Large Bins (8-1/4"w x 11"d x 7"h) - (Model DE only)
  - Medium Bins (5-1/2"w x 11"d x 5"h)
  - Doors: Small Bins (4-1/8"w x 7-1/2"d x 3"h)
- Lockable doors with lever handle, 3 point lock system doors open full 180° (padlock not included).
- 4" high feet.
- Legs allow moving of unit with fork lift truck
- Overall height – 78"
- Powder coated black finish (see options).

## Options:

- Additional Big Bins – **Code RG**
- Additional Large Bins – **Code RB**
- Additional Medium Bins – **Code RC** (Model DE only)
- Additional Small Bins – **Code RD**
- Powder coated gray finish - **Change BL to GP**

## Model DF - Mixed Size Plastic Bins

DxW (in)	Cat. No.	No. of Bins			Wgt. (lbs)
		Big	Large	Small	
24 x 36	DF236-BL	10	16	96	406
48	DF248-BL	10	25	128	510
60	DF260-BL	15	24	160	600
72	DF272-BL	20	28	204	696

## Model DZ – Plastic Bins

DxW (in)	Cat. No.	No. of Bins		Wgt. (lbs)
		Large	Small	
24 x 36	DZ236-BL	36	96	412
48	DZ248-BL	45	128	516
60	DZ260-BL	54	160	620
72	DZ272-BL	63	204	702

## Model DP - Mixed Size Plastic Bins

DxW (in)	Cat. No.	No. of Bins			Wgt. (lbs)
		Big	Large	Small	
24 x 36	DP236-BL	18	0	96	402
48	DP248-BL	18	9	128	506
60	DP260-BL	27	0	160	592
72	DP272-BL	36	0	204	692

## Model DE - Max-Mixed Plastic Bin Cabinet

DxW (in)	Cat. No.	Number of Bins				Wgt. (lbs)
		Big	Large	Medium	Small	
24 x 36	DE236-BL	0	16	24	96	412
48	DE248-BL	6	18	24	128	518
60	DE260-BL	9	21	30	170	602
72	DE272-BL	12	24	36	204	694

Up to 276 bins

# Plastic Bin & Shelf Cabinets - Solid Doors

**Models DN, DT, DX – Durable closed storage cabinets for small part organization**



Model DN236 Shown



Model DT236 Shown



Model DX236 Shown

## Product Features:

- All welded 14 gauge construction (walls & shelves)
- Louvered panels on doors.
- Yellow plastic bin sizes:
  - Backwall: Big Bins (16-1/2"w x 14-3/4"d x 7"h)
  - Large Bins (8-1/4"w x 11"d x 7"h)
  - Doors: Small Bins (4-1/8"w x 7-1/2"d x 3"h)
- Full shelf rails allow shelves to be adjusted on 2-1/2" centers
- Two 14 gauge shelves (1000 lb capacity per shelf)
- Lockable doors with lever handle, 3 point lock system doors open full 180° (padlock not included).
- 4" high feet
- Legs allow moving of unit with fork lift truck
- Overall height – 78"
- **Powder coated black finish** (see options).

## Options:

- Additional Shelf – **Code ST**
- Additional Big Bins – **Code RG**
- Additional Large Bins – **Code RB**
- Additional Small Bins – **Code RD**
- Powder coated gray finish – **Change BL to GP**

## Model DN – Plastic Bins & Shelves

DxW (in)	Cat. No.	No. of Bins			Wgt. (lbs)
		Big	Large	Small	
24 x 36	DN236-BL	8	0	96	432
48	DN248-BL	8	4	128	542
60	DN260-BL	12	0	160	638
72	DN272-BL	16	0	204	742

## Model DT – Plastic Bins & Shelves

DxW (in)	Cat. No.	No. of Bins		Wgt. (lbs)
		Large	Small	
24 x 36	DT236-BL	16	96	438
48	DT248-BL	20	128	546
60	DT260-BL	24	160	636
72	DT272-BL	28	204	720

## Model DX – Plastic Bins & Shelves

DxW (in)	Cat. No.	No. of Bins			Wgt. (lbs)
		Big	Large	Small	
24 x 36	DX236-BL	4	8	96	434
48	DX248-BL	4	12	128	544
60	DX260-BL	6	12	160	632
72	DX272-BL	8	14	204	712

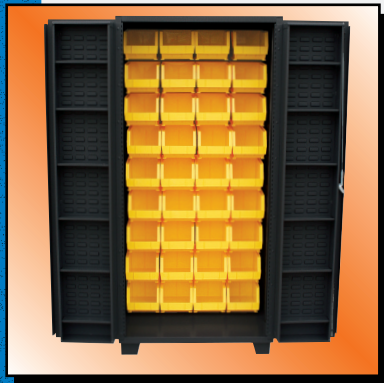


# 4" Deep Door Cabinets with Plastic Bins and/or Shelves

**Models DU, DV, DW, DA – Durable closed storage cabinets for small part organization**



Model DU Shown



Model DV Shown



Model DW Shown



Model DA Shown

## Product Features:

- All welded 14 gauge construction (walls & shelves).
- Louvered panels – back wall & doors.
- Yellow plastic bin sizes:
  - Backwall: Big Bins (16-1/2"w x 14-3/4"d x 7"h)
  - Large Bins (8-1/4"w x 11"d x 7"h)
  - Doors: Small Bins (4-1/8"w x 7-1/2"d x 3"h)
- **Door shelves** – 14 gauge 3-1/2" deep
- Full shelf rails allow shelves to be adjusted on 2-1/2" centers (except Model DV)
- 14 gauge shelves (1000 lb capacity per shelf) - (except Model DV)
- Lockable doors with lever handle, 3 point lock system doors open full 180° (padlock not included).
- 4" high feet
- Legs allow moving of unit with fork lift truck
- Overall height – 78"
- **Powder coated black finish** (see options).

## Options:

- Additional Shelf – **Code ST** (except Model DV)
- Door shelves – **Code DT**
- Additional Big Bins – **Code RG**
- Additional Large Bins – **Code RB**
- Additional Small Bins – **Code RD**
- Powder coated gray finish - **Change BL to GP**

## Model DU - Deep Pocket Door - Bin & Shelf Cabinet

DxW (in)	Cat. No.	No. of Shelves		No. of Bins		Wgt. (lbs)
		Doors	Cabinet	Large	Small	
24 x 36	DU236-BL	6	2	16	48	472
48	DU248-BL	6	2	20	64	584
60	DU260-BL	6	2	24	80	696

## Model DV – Deep Pocket Door - Bin Cabinet

DxW (in)	Cat. No.	No. of Door Shelves	No. of Bins Large	Wgt. (lbs)
24 x 36	DV236-BL	12	36	436
48	DV248-BL	12	45	538
60	DV260-BL	12	54	640

## Model DW - Deep Pocket Door - Bin & Shelf Cabinet

DxW (in)	Cat. No.	No. of Shelves		No. of Bins		Wgt. (lbs)
		Doors	Cabinet	Big	Large	
24 x 36	DW236-BL	12	2	4	8	458
48	DW248-BL	12	2	4	12	566
60	DW260-BL	12	2	6	12	672

## Model DA - Deep Pocket Door Cabinet

DxW (in)	Cat. No.	No. of Shelves		Wgt. (lbs)
		Doors	Cabinet	
24 x 36	DA236-BL	12	4	430
48	DA248-BL	12	4	528
60	DA260-BL	12	4	624

# 14 Gauge Bin & Shelf Cabinet Shells

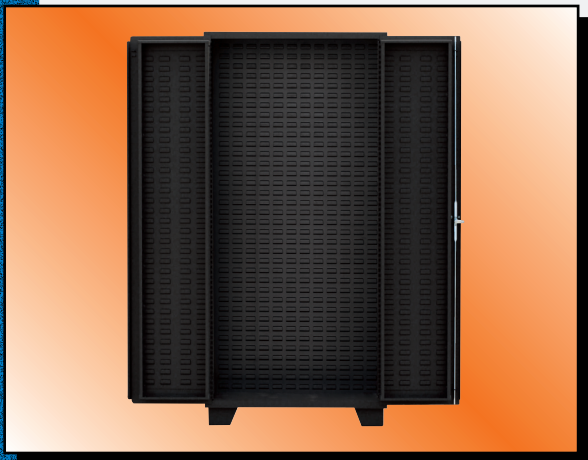
**Models HE, HF, HW, HL, HV, HJ, HO, HP, HM, HX – Cabinet shells do NOT include any bins or shelves...allowing you to customize a cabinet to your requirements from 10 different cabinet shell styles**

## Solid Doors



Model HE Shown

## Deep Pocket Doors



Model HJ Shown

## Mesh Doors



Model HM Shown

### Product Features:

- All welded 14 gauge construction.
- 4" high feet.
- Legs allow moving unit with fork lift truck.
- Overall height - 78"
- Powder coated black finish (see options).

### Option:

- Powder coated gray finish - Change BL to GP

### 3 Types of Doors:

#### Solid Flush Doors - 5 Styles

DxW (in)	Catalog No.	Wgt. (lbs)
<b>Model HE - Louvers (doors &amp; interior) with shelf rails</b>		
24 x 36	HE236-BL	364
24 x 48	HE248-BL	446
24 x 60	HE260-BL	510
24 x 72	HE272-BL	580
<b>Model HF - Louvers (doors &amp; interior) without shelf rails</b>		
24 x 36	HF236-BL	350
24 x 48	HF248-BL	432
24 x 60	HF260-BL	492
24 x 72	HF272-BL	562
<b>Model HW - Louvers (doors only) with shelf rails</b>		
24 x 36	HW236-BL	318
24 x 48	HW248-BL	386
24 x 60	HW260-BL	432
24 x 72	HW272-BL	488
<b>Model HL - Louvers (interior only) with shelf rails</b>		
24 x 36	HL236-BL	336
24 x 48	HL248-BL	404
24 x 60	HL260-BL	458
24 x 72	HL272-BL	526
<b>Model HV - Louvers (interior only) without shelf rails</b>		
24 x 36	HV236-BL	322
24 x 48	HV248-BL	390
24 x 60	HV260-BL	440
24 x 72	HV272-BL	512

#### Deep Pocket Doors - 3 Styles

DxW (in)	Catalog No.	Wgt. (lbs)
<b>Model HJ - Louvers (doors &amp; interior) with shelf rails</b>		
24 x 36	HJ236-BL	396
24 x 48	HJ248-BL	482
24 x 60	HJ260-BL	566
<b>Model HO - Louvers (doors &amp; interior) without shelf rails</b>		
24 x 36	HO236-BL	384
24 x 48	HO248-BL	468
24 x 60	HO260-BL	552
<b>Model HP - Louvers (doors only) with shelf rails</b>		
24 x 36	HP236-BL	350
24 x 48	HP248-BL	422
24 x 60	HP260-BL	490

#### Mesh Doors - 2 Styles

DxW (in)	Catalog No.	Wgt. (lbs)
<b>Model HM - Louvers (interior only) with shelf rails</b>		
24 x 36	HM236-BL	320
24 x 48	HM248-BL	380
24 x 60	HM260-BL	442
<b>Model HX - Louvers (interior only) without shelf rails</b>		
24 x 36	HX236-BL	308
24 x 48	HX248-BL	366
24 x 60	HX260-BL	428

Made in U.S.A.



## Accessories for Shell Cabinets

### Accessories for Bin Cabinets on Page 138

#### Shelves - 1,000 lb Capacity Each

Shelf Code	Use with Cabinet Size	Location	Use with Models
RT136	236	Interior	HL, HM & HX
RT148	248	Interior	
RT160	260	Interior	
ST136	236	Interior	HE, HW, HL, HJ & HP
ST148	248	Interior	
ST160	260	Interior	
ST172	272	Interior	HE, HW & HL
DT18	236	Door	HJ, HO & HP
DT24	248	Door	
DT30	260	Door	

#### Drawers - 250 lb Capacity - up to 6 can be used in a given cabinet

Drawer Code	Use with Cabinet Size	Dimensions H x W x D (in)	Use with Models
DM	236	5 x 30 x 20	HL & HM
DN	248	5 x 42 x 20	

#### Bins

Bin Code	Bin Size	Dimensions W x D x H (in)	Location	Louver Tabs Used	Use with Models
RG	BIG	16-1/2 x 14-3/4 x 7	Interior	6 wide x 4 high	HE, HF, HL, HV, HJ, HO, HM & HX
RK	SUPER	8-1/4 x 14-3/4 x 7	Interior	3 wide x 4 high	
RB	LARGE	8-1/4 x 11 x 7	Interior	3 wide x 4 high	
RC	MEDIUM	5-1/2 x 11 x 5	Interior	2 wide x 3 high	
RD	SMALL	4-1/8 x 7-1/2 x 3	Door	1.5 wide x high	HE, HF, HW, HJ, HO & HP
RJ	XSMALL	4-1/8 x 5-3/8 x 3	Door	1.5 wide x high	

### Data for Bin Placement

#### Cabinets have the following louvers

Cabinet Size	Location	Louvers Wide	Louvers High	Use with Models
236	Interior	12	36	HE, HF, HL, HV, HJ, HO, HM & HX
248	Interior	16	36	
260	Interior	21	36	
272	Interior	25	36	HE, HF, HL & HV
236	Doors (per each)	4	33	HE, HF, HW, HJ, HO & HP
248	Doors (per each)	6	33	
260	Doors (per each)	8	33	
272	Doors (per each)	10	33	HE, HF & HW

**Customer Service can assist with developing a Custom Cabinet and accessories solution tailored to your needs.**

## Work Stands

### Models WS, WV, DR - Heavy Duty Work Stands (1, 2 & 3 Shelf)

2,000 LB CAPACITY



Model WS Shown

2,000 LB CAPACITY



Model WV Shown

1,200 LB CAPACITY



Model DR Shown

#### Product Features:

- All welded construction
- Durable flush mounted 12 gauge shelves
- Corner posts 1-1/2" by 3/16" thick angle with pre punched mounting pads (except Model DR)

#### Other Specifications:

##### Model WS

- Overall height - 30"
- Clearance between shelves - 20"
- Clearance under bottom shelf - 6"

##### Model WV

- Overall height - 32"
- Clearance between shelves - 11"
- Clearance under bottom shelf - 6"

##### Model DR

- Overall height - 18"
- 3 sided Angular bracing between corner posts

#### Options All Models

- Lockable drawer 5"h x 16"w x 16"d with 2 keys - **Code DS** (except Model DR)
- Vinyl matting on top shelf - **Code VM**
- Other shelf heights available.

#### Model WS - 2 Shelf Work Stand

DxW (in)	Cat. No.	Wgt. (lbs)
18 x 24	WS124	58
30	WS130	66
36	WS136	74
48	WS148	88
60	WS160	102
72	WS172	118
24 x 24	WS224	68
30	WS230	78
36	WS236	88
48	WS248	108
60	WS260	128
72	WS272	148
30 x 36	WS336	102
48	WS348	128
60	WS360	152

#### Model WV -

#### 3 Shelf Work Stand

DxW (in)	Cat. No.	Wgt. (lbs)
18 x 24	WV124	72
30	WV130	82
36	WV136	92
48	WV148	112
24 x 24	WV224	84
30	WV230	98
36	WV236	112
48	WV248	140
60	WV260	168
30 x 36	WV336	132
48	WV348	168
60	WV360	202

#### Model DR - Low Storage Rack

DxW (in)	Cat. No.	Wgt. (lbs)
18 x 30	DR130	52
36	DR136	58
24 x 36	DR236	66
48	DR248	78
30 x 60	DR360	102



# Heavy & Mill Duty Work Tables

**Models WG, WF, UG, WD - Extra heavy duty tables for rugged use**

**4,000 LB CAPACITY**



Model WG Shown

**8,000 LB CAPACITY**



Model WF Shown

**12,000 LB CAPACITY**



Model UG Shown

**16,000 LB CAPACITY**



Model WD Shown

## Product Features:

- All welded construction.
- Durable **12 gauge steel shelves** (Except Model WD).
- Flush tops.
- Corner posts - 3 x 3 x 3/16" angle with 3/16" pre punched floor mounting pads
- Lower shelf - 24" deep with 4" stringer
- Clearance between shelves - 16"
- Overall height - 34"

## Other Specifications:

### Model WG

- 3" Channel underbracing support

### Model WF

- 3" Channel underbracing support

### Model UG

- 3/16" thick plate top with extra 3" channel underbracing support

### Model WD

- 1/4" thick plate bench top with extra 3" channel underbracing support

## Model WG - 4,000 lb cap - Work Table

DxW (in)	Cat. No.	Wgt. (lbs)
36 x 48	WG448	230
60	WG460	272
72	WG472	310

## Model WF - 8,000 lb cap - Work Table

DxW (in)	Cat. No.	Wgt. (lbs)
36 x 48	WF448	242
60	WF460	284
72	WF472	326

## Model UG - 12,000 lb cap - 3/16" Plate Work Table



DxW (in)	Cat. No.	Wgt. (lbs)
36 x 48	UG448	286
60	UG460	338
72	UG472	392

## Model WD - 16,000 lb cap - 1/4" Plate Work Table

DxW (in)	Cat. No.	Wgt. (lbs)
36 x 48	WD448	316
60	WD460	376
72	WD472	436

Made in U.S.A.

# Heavy & Mill Duty Work Tables with Drawers

**Models WE, RY, RU, RW - Extra heavy duty tables for rugged use**

**4,000 LB CAPACITY**



Model WE Shown

**4,000 LB CAPACITY**



Model RY Shown

**4,000 LB CAPACITY**



Model RU Shown

**4,000 LB CAPACITY**



Model RW Shown

## Product Features:

- All welded construction.
- Durable 12 gauge steel shelves.
- Flush tops.
- Corner posts - 3 x 3 x 3/16" angle with 3/16" pre punched floor mounting pads
- Lower shelf - 24" deep with 4" stringer
- Clearance between shelves - 16"
- Overall height - 34"

## Other Specifications:

### Model WE

- Lockable drawer (left side) - 5"h x 16"w x 16"d with 2 keys

### Model RY

- 2 stacked lockable drawers (left side) - 5"h x 16"w x 16"d with 2 keys

### Model RU

- 3" Channel underbracing support
- Lockable drawer (left side) - 5"h x 30"w x 20"d with 2 keys

### Model RW

- 3" Channel underbracing support
- 2 stacked lockable drawers - 5"h x 30"w x 20"d with 2 keys

## Model WE - 4,000 lb cap - Work Table With 1 Drawer

DxW (in)	Cat. No.	Wgt. (lbs)
36 x 48	WE448	252
60	WE460	294
72	WE472	332

## Model RY - 4,000 lb cap - Work Table With 2 Stacked Drawers



DxW (in)	Cat. No.	Wgt. (lbs)
36 x 48	RY448	274
60	RY460	316
72	RY472	354

## Model RU - 4,000 lb cap - Work Table With 1 Drawer



DxW (in)	Cat. No.	Wgt. (lbs)
36 x 48	RU448	280
60	RU460	322
72	RU472	360

## Model RW - 4,000 lb cap - Work Table With 2 Stacked Drawers



DxW (in)	Cat. No.	Wgt. (lbs)
36 x 48	RW448	330
60	RW460	372
72	RW472	410

**Made in U.S.A.**

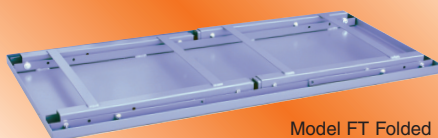


# Heavy Duty Folding Leg Work Tables

## Model FT - Heavy Duty Continuous Length Production Work Tables with Bolt on Leg Assemblies



Model FT Shown



Model FT Folded

### Product Features:

- All welded construction (except folding leg assemblies).
- **Adjustable 2" square tubular legs**  
(adjusts top height - 30" - 38" on 2" centers).
- **Leg assembly - 1 bolt per leg.**
- Durable 12 gauge table tops with twin channel under bracing.
- Starter Unit (leg assembly at each end) & Add On Unit (leg assembly at one end).
- Units bolt together to form continuous table lengths in 1 ft. increments (except 7") beginning with 4 ft. starter, with no length limits.
- Tables are either 30" or 36" wide.
- Table top is flush.
- Powder coated gray finish.

### Options:

- Hard board mounted to steel top - **Code HB**
- Other colors available.

### Starter Tables

Catalog No.	Depth	Width	Wgt. (lbs) per feet
FT304	30"	48"	28
FT305	30"	60"	28
FT306	30"	72"	28
FT404	36"	48"	30
FT405	36"	60"	30
FT406	36"	72"	30

### Add On Tables

Catalog No.	Depth	Width	Wgt. (lbs) per feet
FT304AD	30"	48"	22
FT305AD	30"	60"	22
FT306AD	30"	72"	22
FT404AD	36"	48"	24
FT405AD	36"	60"	24
FT406AD	36"	72"	24

Tables begin with a starter and can continue to any length using the add ons.

# Heavy Duty Workdesks

## Models WO, WU, WY, WZ - Heavy duty workdesks for rugged use

2,000 LB CAPACITY



Model WO Shown

2,000 LB CAPACITY



Model WU Shown

2,000 LB CAPACITY



Model WY Shown

2,000 LB CAPACITY



Model WZ Shown

### Product Features:

- All welded construction.
- 12 gauge top, front side lip down (flush), other 3 sides up for retention.
- 12 gauge feet allow moving unit with fork lift truck.
- Work surface height - 31" (Models WO, WU & WY); 32" (Model WZ)
- Powder coated gray finish.

### Other Specifications:

#### Model WO

- 2 side 18" x 24" cabinets (14 gauge) each with 4 lockable drawers (5"h x 16"w x 16"d) with 2 keys.
- 2" x 3/16" thick lower back support between cabinets.

#### Model WU

- 2 side 18" x 24" cabinets (14 gauge) each with lockable door and 2 keys.
- 2" x 3/16" thick lower back support between cabinets.
- Cabinet height clearance - 24".

#### Model WY

- 2 side 18" x 24" cabinets (14 gauge). One side with lockable door and 2 keys (cabinet height clearance 24"), the other side with 4 lockable drawers (5"h x 16"w x 16"d) with 2 keys.
- 2" x 3/16" thick lower back support between cabinets.

#### Model WZ

- 2 side 18" x 24" 12 gauge shelf units.
- Corner posts 1-1/2" x 3/16" thick angle with pre punched mounting pads.

### Options All Models

- Other colors available.

### Model WO - Workdesk with 8 Drawers

DxW (in)	Cat. No.	Wgt. (lbs)
30 x 60	W0360	304
72	W0372	316

### Model WU - Workdesk with 2 Closed Cabinets

DxW (in)	Cat. No.	Wgt. (lbs)
30 x 60	WU360	180
72	WU372	192

### Model WY - Heavy Duty Workdesk with 4 Drawers & 1 Closed Cabinet

DxW (in)	Cat. No.	Wgt. (lbs)
30 x 60	WY360	242
72	WY372	254

### Model WZ - Heavy Duty Workdesk with Shelf Units

DxW (in)	Cat. No.	Wgt. (lbs)
30 x 60	WZ360	208
72	WZ372	220

All Products Ship "Qwik Ship"



# Heavy Duty Fixed Workbenches

## Models WB, UA, WK, UM - Heavy duty use workbenches

3,000 LB CAPACITY



Model WB Shown

3,000 LB CAPACITY



Model UA Shown

3,000 LB CAPACITY



Model WK Shown

3,000 LB CAPACITY



Model UM Shown

### Product Features:

- All welded construction.
- Durable **12 gauge steel shelves with underbracing** (ideal for mounting vises).
- **2" square tubular corner construction** with floor pads.
- Top shelf front side lip down (flush), other 3 sides up for retention (Models WB & WK).
- Flush Top (Models UA & UM).
- Lockable drawer (left side) 5"h x 16"w x 16"d with 2 keys (Models WK & UM).
- Lower half shelf & 4" back support.
- Clearance between shelves - 22".
- Workshelf height - 35".

### Options:

- Non-conductive vinyl matting on top shelf - **Code VM**
- Wood capped top - **Code WT**
- Adjustable heights - 35", 37", 39" & 41" - **Code AL**
- Power strip - **Code PS**
- 4' light fixture and frame - **Code LF**
- Other work surface heights available.

### Model WB - Fixed Workbench

DxW (in)	Cat. No.	Wgt. (lbs)
24 x 48	WB248	128
60	WB260	150
30 x 60	WB360	164
72	WB372	186
36 x 60	WB460	186
72	WB472	212

### Model UA - Fixed Workbench with Flush Top



DxW (in)	Cat. No.	Wgt. (lbs)
24 x 48	UA248	128
60	UA260	150
30 x 60	UA360	164
72	UA372	186
36 x 60	UA460	186
72	UA472	212

### Model WK - Fixed Workbench with Drawer

DxW (in)	Cat. No.	Wgt. (lbs)
24 x 48	WK248	150
60	WK260	172
30 x 60	WK360	186
72	WK372	208
36 x 60	WK460	208
72	WK472	234

### Model UM - Fixed Workbench with Drawer & Flush Top



DxW (in)	Cat. No.	Wgt. (lbs)
24 x 48	UM248	150
60	UM260	172
30 x 60	UM360	186
72	UM372	208
36 x 60	UM460	208
72	UM472	234

# Heavy Duty Fixed Workbenches

## Models UJ, UN, WA, WC - Heavy duty use workbenches

3,000 LB CAPACITY



Model UJ Shown

3,000 LB CAPACITY



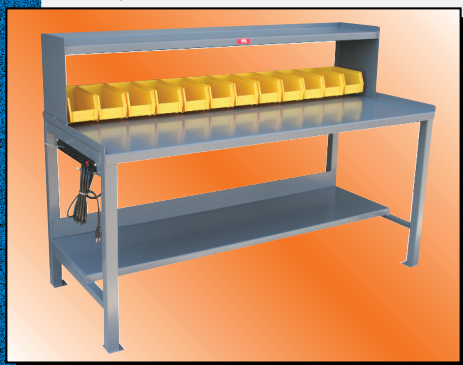
Model UN Shown

3,000 LB CAPACITY



Model WA Shown

3,000 LB CAPACITY



Model WC472 Shown

### Product Features:

- All welded construction.
- Durable 12 gauge steel shelves with **underbracing** (ideal for mounting vises).
- Upper tool half shelf 12" deep (14" high) (Models WA & WC).
- 6 outlet power strip with 15 amp circuit breaker and 3 prong grounded 15 ft cord (Model WC only).
- Removable plastic bins (5-1/2"w x 11"d x 5"h) on mounting rail (Model WC only).  
Length 48" - 8 Bins  
Length 60" - 10 Bins  
Length 72" - 12 Bins
- 2" square tubular corner construction with floor pads.
- Top shelf front side lip down (flush), other 3 sides up for retention (Except Model UN)
- Flush Top (Model UN only).
- Lockable drawer (left side) 5"h x 30"w x 20"d with 2 keys (Models UJ & UN).
- Lower half shelf & 4" back support.
- Clearance between shelves - 22".
- Workshelf height - 35".

### Options:

- Non-conductive vinyl matting on top shelf - **Code VM**
- Wood capped top - **Code WT**
- Adjustable heights - 35", 37", 39" & 41" - **Code AL**
- Power strip (except Model WC) - **Code PS**
- 4' light fixture and frame - **Code LF**
- Additional bins (5-1/2"w x 11"d x 5"h) - **Code RC - specify quantity**
- Other work surface heights available.

### Model UJ - Fixed Workbench with 30" Wide Drawer



DxW (in)	Cat. No.	Wgt. (lbs)
24 x 48	UJ248	184
60	UJ260	206
30 x 60	UJ360	220
72	UJ372	242
36 x 60	UJ460	242
72	UJ472	268

### Model UN - Fixed Workbench with 30" Wide Drawer & Flush Top



DxW (in)	Cat. No.	Wgt. (lbs)
24 x 48	UN248	184
60	UN260	206
30 x 60	UN360	220
72	UN372	242
36 x 60	UN460	242
72	UN472	268

### Model WA - Fixed Workbench with 1/2 Shelf Riser

DxW (in)	Cat. No.	Wgt. (lbs)
24 x 48	WA248	160
60	WA260	182
30 x 60	WA360	202
72	WA372	230
36 x 60	WA460	218
72	WA472	246

### Model WC - Fixed Workbench with 1/2 Shelf, Power Strip & Bins

DxW (in)	Cat. No.	Wgt. (lbs)
24 x 48	WC248	176
60	WC260	206
30 x 60	WC360	220
72	WC372	260
36 x 60	WC460	250
72	WC472	284

All Products Ship "Qwik Ship"



# Heavy Duty Fixed Workbenches

## Models WR, WT, WX, WW - Heavy duty use workbenches

3,000 LB CAPACITY



Model WR Shown

3,000 LB CAPACITY



Model WT Shown

3,000 LB CAPACITY



Model WX Shown

3,000 LB CAPACITY



Model WW Shown

### Product Features:

- All welded construction.
- Durable 12 gauge steel shelves with underbracing (ideal for mounting vises).
- 2" square tubular corner construction with floor pads.

### Other Specifications:

#### Model WR:

- 14 gauge steel pegboard - 19" high.

#### Model WT:

- 16 gauge louvered panel - 19" high.
- No bins included (see options).

#### Model WX:

- Upper tool half shelf 12" deep (14" high)
- 4' light fixture and frame

#### Model WW:

- Sloped upper half shelf 12" deep & 14" high includes removable plastic bins (8-1/4" w x 11" d x 7" h):  
Length 48" - 5 Bins  
Length 60" - 7 Bins  
Length 72" - 8 Bins

- Top shelf front side lip down (flush), other 3 sides up for retention.
- Lower half shelf & 4" back support.
- Clearance between shelves - 22".
- Workshelf height - 35".

### Options:

- Lockable drawer (left side under top shelf) 5"h x 16"w x 16"d with 2 keys - **Code DS**
- Non-conductive vinyl matting on top shelf - **Code VM**
- Wood capped top - **Code WT**
- Adjustable heights - 35", 37", 39", 41" - **Code AL**
- Power strip - **Code PS**
- 4' light fixture and frame - **Code LF** (Except Model WX)
- Additional bins (8-1/4" w x 11" d x 7" h) - **Code RB** - specify quantity
- Other work surface heights available.

### Model WR - Fixed Workbench with Pegboard Panel

DxW (in)	Cat. No.	Wgt. (lbs)
24 x 48	WR248	172
60	WR260	200
30 x 60	WR360	210
72	WR372	240
36 x 60	WR460	232
72	WR472	264

### Model WT - Fixed Workbench with Louvered Panel

DxW (in)	Cat. No.	Wgt. (lbs)
24 x 48	WT248	168
60	WT260	196
30 x 60	WT360	206
72	WT372	234
36 x 60	WT460	230
72	WT472	260

### Model WX - Fixed Workbench with 1/2 Shelf & Light Fixture

DxW (in)	Cat. No.	Wgt. (lbs)
24 x 48	WX248	232
60	WX260	260
30 x 60	WX360	270
72	WX372	302
36 x 60	WX460	286
72	WX472	318

### Model WW - Fixed Workbench with Sloped 1/2 Shelf & Plastic Bins

DxW (in)	Cat. No.	Wgt. (lbs)
24 x 48	WW248	170
60	WW260	198
30 x 60	WW360	208
72	WW372	234
36 x 60	WW460	226
72	WW472	252





**Jamco Products, Inc.**  
**One Jamco Ct.**  
**P.O. Box 66**  
**So. Beloit, IL 61080**  
**Ph: 815.624.0400**  
**Fax: 815.624.0600**  
**[www.jamcoproducts.com](http://www.jamcoproducts.com)**  
**E-mail: [Sales@jamcoproducts.com](mailto:Sales@jamcoproducts.com)**  
**TOLL FREE: 800.748.8080**



Distributed By: